

IR3535MTRPBF



[International Rectifier \(Infineon Technologies\)](#)

IC MOSFET GATE DRIVER 16MLPQ

Lead free / RoHS Compliant

Integrated Circuits (ICs)

[IR3535MTRPBF.pdf](#)

Buy Now

Out Stock

0 pcs

Minimum:1

Multiples:100

Manufacturer lead time 10 weeks

part#IR3535MTRPBF is available, see description of IR3535MTRPBF as below .

use the request quote form to request IR3535MTRPBF price and lead time.

Buy Electronic Components at zeanoit.com .we are an independent distributor of electronic components with extensive inventory in stock.

The price and lead time for IR3535MTRPBF depending on the quantity required, availability and warehouse location.Contact us today and our sales team will send you quotation soon.

Email: sales@zeanoit.com

Shopping Process

1

Confirm the product

2

submit the order

3

payment

4

wait for delivery

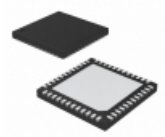
5

receive the goods

Specifications

Voltage - Supply:	4.5 V ~ 7 V
Supplier Device Package:	16-MLPQ (3x3)
Series:	-
Rise / Fall Time (Typ):	-
Packaging:	Tape & Reel (TR)
Package / Case:	16-VFQFN Exposed Pad
Operating Temperature:	-
Number of Drivers:	2
Mounting Type:	Surface Mount
Logic Voltage - VIL, VIH:	-
Input Type:	Non-Inverting
Gate Type:	N-Channel MOSFET
Driven Configuration:	Half-Bridge
Current - Peak Output (Source, Sink):	-, 4A
Channel Type:	Synchronous

Related products



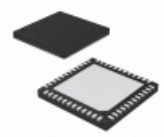
IR3536MTRPBF
IC CTRLR PWM 6-PHASE 48QFN
[Infineon Technologies](#)

RFQ



IR3536AMTR
[IR](#)

RFQ



IR3536AMTRPBF
IC REG CTRLR DL BUCK PWM 48QFN
[Infineon Technologies](#)

RFQ



IR3531MTRPBF
IC OUTPUT CTRL 4+1 PHASE 48MLPQ
[Infineon Technologies](#)

RFQ



IR3529M
[IR](#)

RFQ



IR3536A
[IR](#)

RFQ



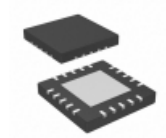
IR3531AMTRPBF
IC OUTPUT CTRL 4+1 PHASE 48MLPQ
[Infineon Technologies](#)

RFQ



IR3536MTR
[IR](#)

RFQ



IR3529MTRPBF
IC CTRL XPHASE CPU/ASIC 20-MLPQ
[Infineon Technologies](#)

RFQ



IR3529MTRPBF.
[IR](#)

RFQ

Guess You May Looking For



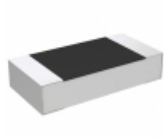
RT1206CRB0759RL
RES SMD 59 OHM 0.25% 1/4W 1206
[Yageo](#)

RFQ



ERJ-B1AJ562U
RES SMD 5.6K OHM 1W 2010 WIDE
[Panasonic Electronic Components](#)

RFQ



CPF1206B30RE1
RES SMD 30 OHM 0.1% 1/8W 1206
[TE Connectivity Passive Product](#)

RFQ



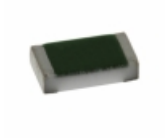
RNCF1210BTE6K98
RES SMD 6.98K OHM 0.1% 1/3W 1210
[Stackpole Electronics Inc.](#)

RFQ



ERA-2HRC1022X
RES SMD 10.2K OHM 1/16W 0402
[Panasonic Electronic Components](#)

RFQ



TNPW060311R3BEEA
RES SMD 11.3 OHM 0.1% 1/10W 0603
[Vishay Dale](#)

RFQ



RNCF2512BTC16K5
RES SMD 16.5K OHM 0.1% 1/2W 2512
[Stackpole Electronics Inc.](#)

RFQ



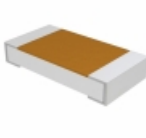
RNCF1210BKE8K45
RES SMD 8.45K OHM 0.1% 1/3W 1210
[Stackpole Electronics Inc.](#)

RFQ



RT0805WRE0723K7L
RES SMD 23.7KOHM 0.05% 1/8W 0805
[Yageo](#)

RFQ



TNPW120697R6BETA
RES SMD 97.6 OHM 0.1% 1/4W 1206
[Vishay Dale](#)

RFQ