

S-93C76ADFJ-TB-G



SII Semiconductor Corporation

IC EEPROM 8KBIT 2MHZ 8SOP
Lead free / RoHS Compliant
Integrated Circuits (ICs)

[S-93C76ADFJ-TB-G.pdf](#)

Buy Now

Out Stock

0 pcs

Minimum:1

Multiples:100

Manufacturer lead time 10 weeks

part#S-93C76ADFJ-TB-G is available, see description of S-93C76ADFJ-TB-G as below . use the request quote form to request S-93C76ADFJ-TB-G price and lead time. Buy Electronic Components at zeanoit.com .we are an independent distributor of electronic components with extensive inventory in stock. The price and lead time for S-93C76ADFJ-TB-G depending on the quantity required, availability and warehouse location.Contact us today and our sales team will send you quotation soon.
Email: sales@zeanoit.com

Shopping Process

1

Confirm the product

2

submit the order

3

payment

4

wait for delivery

5

receive the goods

Specifications

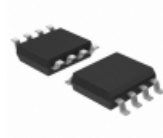
Voltage - Supply:	1.8 V ~ 5.5 V
Supplier Device Package:	8-SOP
Speed:	2MHz
Series:	-
Packaging:	Tape & Reel (TR)
Package / Case:	8-SOIC (0.154", 3.90mm Width)
Operating Temperature:	-40°C ~ 85°C (TA)
Memory Type:	Non-Volatile
Memory Size:	8Kb (512 x 16)
Memory Format:	EEPROM
Interface:	3-Wire Serial

Related products



S-93C76ADFJ-TBH-G
[SEIKO](#)

RFQ



S-93C66BR01-J8T1U
IC EEPROM 4KBIT 2MHZ 8SOP
[SII Semiconductor Corporation](#)

RFQ



S-93C76ADFJ
[SEIKO](#)

RFQ



S-93C76ADFJ-TBH-S
[SEIKO](#)

RFQ



S-93C76ADFJ-TBHD-G
[SEIKO](#)

RFQ



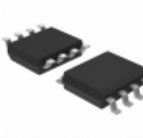
S-93C76ADFJ-TB
[SEIKO](#)

RFQ



S-93C66BR01-J8T1G
[SII](#)

RFQ



S-93C66BR01-J8T1G
IC EEPROM 4KBIT 2MHZ 8SOP
[SII Semiconductor Corporation](#)

RFQ



S-93C76ADFJ-TB-U
IC EEPROM 8KBIT 2MHZ 8SOP
[SII Semiconductor Corporation](#)

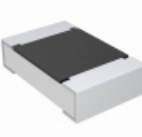
RFQ



S-93C76ADFJ-TBK
[SEIKO](#)

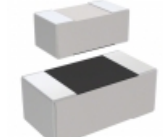
RFQ

Guess You May Looking For



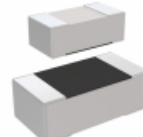
CRCW080512K0FKEA
RES SMD 12K OHM 1% 1/8W 0805
[Vishay Dale](#)

RFQ



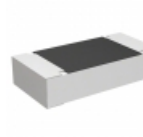
RC1005F30R1CS
RES SMD 30.1 OHM 1% 1/16W 0402
[Samsung Electro-Mechanics America, Inc.](#)

RFQ



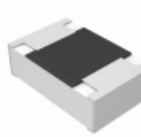
RC1608F3160CS
RES SMD 316 OHM 1% 1/10W 0603
[Samsung Electro-Mechanics America, Inc.](#)

RFQ



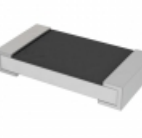
ERA-8AEB7151V
RES SMD 7.15K OHM 0.1% 1/4W 1206
[Panasonic Electronic Components](#)

RFQ



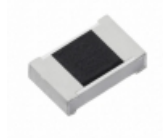
ERJ-PB6B4121V
RES SMD 4.12K OHM 0.1% 1/4W 0805
[Panasonic Electronic Components](#)

RFQ



RL1206FR-7W0R091L
RES SMD 0.091 OHM 1% 1/2W 1206
[Yageo](#)

RFQ



ERJ-S03F2493V
RES SMD 249K OHM 1% 1/10W 0603
[Panasonic Electronic Components](#)

RFQ



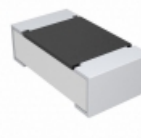
CSR0603JTR130
RES SMD 0.13 OHM 5% 1/8W 0603
[Stackpole Electronics Inc.](#)

RFQ



RG2012P-82R5-D-T5
RES SMD 82.5 OHM 0.5% 1/8W 0805
[Susumu](#)

RFQ



CRCW060310K0FHTAP
RES SMD 10K OHM 1% 1/10W 0603
[Vishay Dale](#)

RFQ