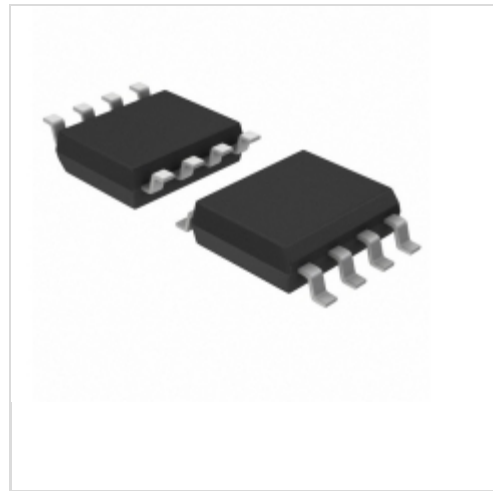


LNK4014D-TL



Power Integrations

IC OFF-LINE CNTRLR 15W 8SOIC
Lead free / RoHS Compliant
Integrated Circuits (ICs)

[LNK4014D-TL.pdf](#)

Buy Now

Out Stock

0 pcs

Minimum:1

Multiples:100

Manufacturer lead time 10 weeks

Images are for reference only.

See Product Specifications for product details.

If you are interested to buy LNK4014D-TL,Just Email us.

Sales@zeanoit.com

our sales team will reply you within 24 hours

Shopping Process

1

Confirm the product

2

submit the order

3

payment

4

wait for delivery

5

receive the goods

Specifications

Voltage - Supply (Vcc/Vdd):	5 V ~ 16.5 V
Voltage - Breakdown:	-
Topology:	Flyback
Supplier Device Package:	8-SO
Series:	LinkSwitch™-4
Power (Watts):	15W
Packaging:	Tape & Reel (TR)
Package / Case:	8-SOIC (0.154", 3.90mm Width)
Output Isolation:	Isolated
Operating Temperature:	-25°C ~ 125°C (TJ)
Mounting Type:	Surface Mount
Internal Switch(s):	No
Frequency - Switching:	65kHz
Fault Protection:	Over Temperature, Over Voltage, Short Circuit
Duty Cycle:	-
Control Features:	-

Related products



LNK4013S-TL

IC OFF-LINE CNTRLR 8W SOT23-6
[Power Integrations](#)

RFQ



LNK4022S-TL

IC OFF-LINE CNTRLR 6.5W SOT23-6
[Power Integrations](#)

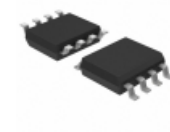
RFQ



LNK4023S-TL

IC OFF-LINE CNTRLR 8W SOT23-6
[Power Integrations](#)

RFQ



LNK4023D-TL

IC OFF-LINE CNTRLR 10W 8SOIC
[Power Integrations](#)

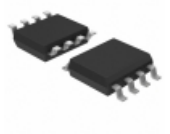
RFQ



LNK4003S-TL

IC OFF-LINE CNTRLR 8W SOT23-6
[Power Integrations](#)

RFQ



LNK4004D-TL

IC OFF-LINE CNTRLR 15W 8SOIC
[Power Integrations](#)

RFQ



LNK4024D

[POWER](#)

RFQ



LNK4012S-TL

IC OFF-LINE CNTRLR 6.5W SOT23-6
[Power Integrations](#)

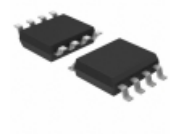
RFQ



LNK4013D-TL

IC OFF-LINE CNTRLR 10W 8SO
[Power Integrations](#)

RFQ



LNK4024D-TL

IC OFF-LINE CNTRLR 15W 8SOIC
[Power Integrations](#)

RFQ

Guess You May Looking For



ERA-2HEC6191X

RES SMD 6.19K OHM 1/16W 0402
[Panasonic Electronic Components](#)

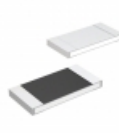
RFQ



CR2010-J/-6R2ELF

RES SMD 6.2 OHM 5% 1/2W 2010
[Bourns Inc.](#)

RFQ



CRM2512-FX-88R7ELF

RES SMD 88.7 OHM 1% 2W 2512
[Bourns Inc.](#)

RFQ



RT0805BRE07332RL

RES SMD 332 OHM 0.1% 1/8W 0805
[Yageo](#)

RFQ



RT1206CRE0760K4L

RES SMD 60.4KOHM 0.25% 1/4W 1206
[Yageo](#)

RFQ



RNCF0402BKE73K2

RES SMD 73.2KOHM 0.1% 1/16W 0402
[Stackpole Electronics Inc.](#)

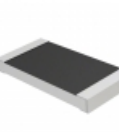
RFQ



CSRN2010JTR120

RES SMD 0.12 OHM 5% 1W 2010
[Stackpole Electronics Inc.](#)

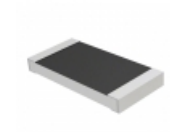
RFQ



RMCP2010FT41R2

RES SMD 41.2 OHM 1% 1W 2010
[Stackpole Electronics Inc.](#)

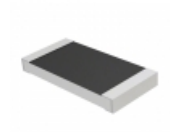
RFQ



RMCP2010FT84R5

RES SMD 84.5 OHM 1% 1W 2010
[Stackpole Electronics Inc.](#)

RFQ



RMCP2010FT681R

RES SMD 681 OHM 1% 1W 2010
[Stackpole Electronics Inc.](#)

RFQ