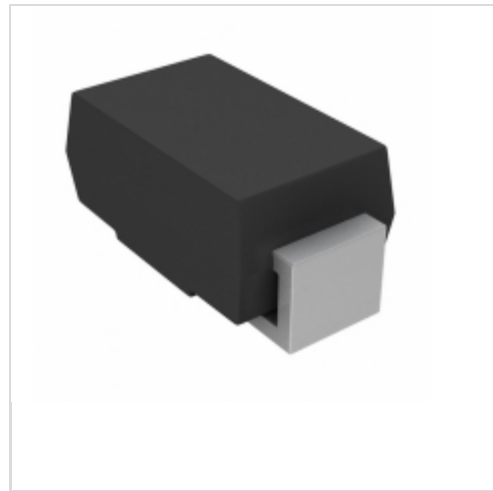


BYG22B-M3/TR3



Vishay / Semiconductor - Diodes Division

DIODE AVALANCHE 100V 2A DO214AC

Lead free / RoHS Compliant

Discrete Semiconductor Products

[BYG22B-M3/TR3.pdf](#)

Buy Now

Out Stock

0 pcs

Minimum:1

Multiples:100

Manufacturer lead time 10 weeks

part#BYG22B-M3/TR3 is available, see description of BYG22B-M3/TR3 as below .

use the request quote form to request BYG22B-M3/TR3 price and lead time.

Buy Electronic Components at zeanoit.com .we are an independent distributor of electronic components with extensive inventory in stock.

The price and lead time for BYG22B-M3/TR3 depending on the quantity required, availability and warehouse location.Contact us today and our sales team will send you quotation soon.

Email: sales@zeanoit.com

Shopping Process

1

Confirm the product

2

submit the order

3

payment

4

wait for delivery

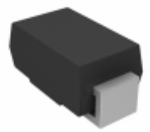
5

receive the goods

Specifications

Voltage - Forward (Vf) (Max) @ If:	1.1V @ 2A
Voltage - DC Reverse (Vr) (Max):	100V
Supplier Device Package:	DO-214AC (SMA)
Speed:	Fast Recovery = 200mA (Io)
Series:	Automotive, AEC-Q101
Reverse Recovery Time (trr):	25ns
Packaging:	Tape & Reel (TR)
Package / Case:	DO-214AC, SMA
Operating Temperature - Junction:	-55°C ~ 150°C
Mounting Type:	Surface Mount
Diode Type:	Avalanche
Current - Reverse Leakage @ Vr:	1µA @ 100V
Current - Average Rectified (Io):	2A
Capacitance @ Vr, F:	-

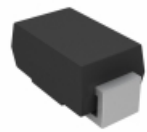
Related products



BYG22BHM3/TR

DIODE AVALANCHE 100V 2A DO214AC
[Vishay Semiconductor Diodes Division](#)

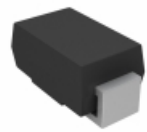
RFQ



BYG22AHM3/TR3

DIODE AVALANCHE 50V 2A DO214AC
[Vishay Semiconductor Diodes Division](#)

RFQ



BYG22BHM3/TR3

DIODE AVALANCHE 100V 2A DO214AC
[Vishay Semiconductor Diodes Division](#)

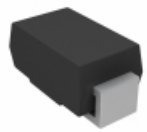
RFQ



BYG22B-TR

[VISHAY](#)

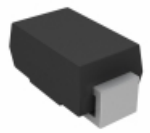
RFQ



BYG22B-E3/TR3

DIODE AVALANCHE 100V 2A DO214AC
[Vishay Semiconductor Diodes Division](#)

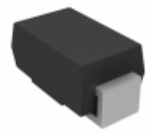
RFQ



BYG22B-M3/TR

DIODE AVALANCHE 100V 2A DO214AC
[Vishay Semiconductor Diodes Division](#)

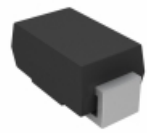
RFQ



BYG22BHE3/TR3

DIODE AVALANCHE 100V 2A DO214AC
[Vishay Semiconductor Diodes Division](#)

RFQ



BYG22B-E3/TR

DIODE AVALANCHE 100V 2A DO214AC
[Vishay Semiconductor Diodes Division](#)

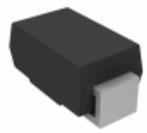
RFQ



BYG22B

[VISHAY](#)

RFQ

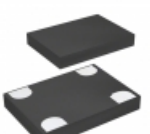


BYG22BHE3/TR

DIODE AVALANCHE 100V 2A DO214AC
[Vishay Semiconductor Diodes Division](#)

RFQ

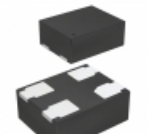
Guess You May Looking For



SIT1602BC-83-XXE-77.760000T

-20 TO 70C, 7050, 50PPM, 2.25V-3
[SITIME](#)

RFQ



SIT1602BC-71-28S-66.666000D

-20 TO 70C, 2016, 20PPM, 2.8V, 6
[SITIME](#)

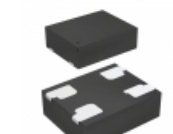
RFQ



SIT1602BI-33-25E-74.250000Y

-40 TO 85C, 5032, 50PPM, 2.5V, 7
[SITIME](#)

RFQ



SIT1602BC-11-30N-65.000000E

-20 TO 70C, 2520, 20PPM, 3.0V, 6
[SITIME](#)

RFQ



SIT1602BI-21-33E-27.000000D

OSC MEMS 27.0000MHZ LVCMOS SMD
[SITIME](#)

RFQ



SIT1602BI-21-25E-66.600000D

-40 TO 85C, 3225, 20PPM, 2.5V, 6
[SITIME](#)

RFQ



SIT1602BI-21-25N-66.000000E

-40 TO 85C, 3225, 20PPM, 2.5V, 6
[SITIME](#)

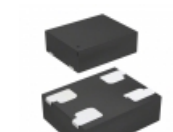
RFQ



SIT2018BE-S2-30E-100.000000E

OSC MEMS 100.0000MHZ LVCMOS SMD
[SITIME](#)

RFQ



SIT8008BC-11-33E-80.000000E

OSC MEMS 80.0000MHZ LVCMOS SMD
[SITIME](#)

RFQ



SIT1602AI-13-33E-72.000000E

OSC XO 3.3V 72MHZ OE
[SITIME](#)

RFQ