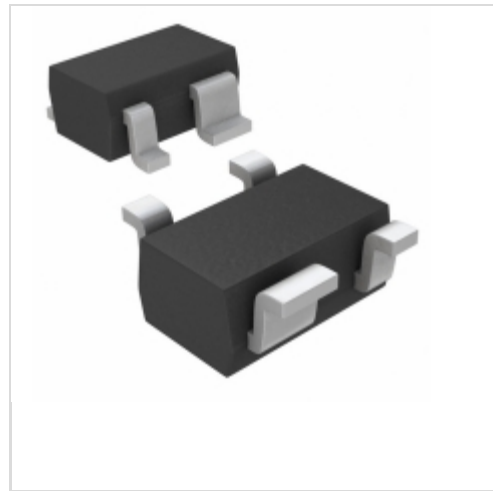


MAX6385XS41D6-T

Maxim Integrated

 IC MPU/RESET CIRC 4.10V SC70-4
 Contains lead / RoHS non-compliant
 Integrated Circuits (ICs)

- [1.MAX6385XS41D6-T.pdf](#)
- [2.MAX6385XS41D6-T.pdf](#)

part#MAX6385XS41D6-T is available, see description of MAX6385XS41D6-T as below . use the request quote form to request MAX6385XS41D6-T price and lead time. Buy Electronic Components at zeanoit.com .we are an independent distributor of electronic components with extensive inventory in stock. The price and lead time for MAX6385XS41D6-T depending on the quantity required, availability and warehouse location.Contact us today and our sales team will send you quotation soon. Email: sales@zeanoit.com

Shopping Process

1

Confirm the product

2

submit the order

3

payment

4

wait for delivery

5

receive the goods

Specifications

Voltage - Threshold:	4.1V
Type:	Simple Reset/Power-On Reset
Supplier Device Package:	SC-70-4
Series:	-
Reset Timeout:	560 ms Minimum
Reset:	Active High
Packaging:	Tape & Reel (TR)
Package / Case:	SC-82A, SOT-343
Output:	Push-Pull, Totem Pole
Operating Temperature:	-40°C ~ 125°C (TA)
Number of Voltages Monitored:	1
Mounting Type:	Surface Mount

Related products


MAX6385XS41D6-T
 in stock
[MAXIM](#)

RFQ


MAX6385XS41D5-T
 IC MPU/RESET CIRC 4.10V SC70-4
[Maxim Integrated](#)

RFQ


MAX6385XS41D4-T
 IC MPU/RESET CIRC 4.10V SC70-4
[Maxim Integrated](#)

RFQ


MAX6385XS41D4-T
 in stock
[MAXIM](#)

RFQ


MAX6385XS42D1-T
 IC MPU/RESET CIRC 4.20V SC70-4
[Maxim Integrated](#)

RFQ


MAX6385XS42D1-T
 in stock
[MAXIM](#)

RFQ


MAX6385XS41D7-T
 IC MPU/RESET CIRC 4.10V SC70-4
[Maxim Integrated](#)

RFQ


MAX6385XS41D5-T
 in stock
[MAXIM](#)

RFQ


MAX6385XS42D2-T
 IC MPU/RESET CIRC 4.20V SC70-4
[Maxim Integrated](#)

RFQ


MAX6385XS41D7-T
 in stock
[MAXIM](#)

RFQ

Guess You May Looking For


RG1005P-1370-C-T10
 RES SMD 137 OHM 0.25% 1/16W 0402
[Susumu](#)

RFQ


RG3216V-5361-C-T5
 RES SMD 5.36KOHM 0.25% 1/4W 1206
[Susumu](#)

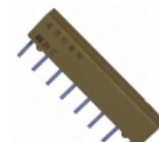
RFQ


RG3216N-4990-C-T5
 RES SMD 499 OHM 0.25% 1/4W 1206
[Susumu](#)

RFQ


YC248-JR-0730KL
 RES ARRAY 8 RES 30K OHM 1606
[Yageo](#)

RFQ


4308R-104-810/131L
 RES NETWORK 12 RES MULT OHM 8SIP
[Bourns Inc.](#)

RFQ


ORNV50022002TF
 RES NETWORK 5 RES MULT OHM 8SOIC
[Vishay Thin Film](#)

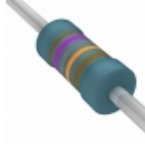
RFQ


CMS16CME30K00JE
 RES CAP BLEEDER 30K OHM 5% 16W
[Vishay Huntington Electric Inc.](#)

RFQ


CF18JA24K0
 RES 24K OHM 1/8W 5% AXIAL
[Stackpole Electronics Inc.](#)

RFQ


MBA02040C1783FRP00
 RES 178K OHM 0.4W 1% AXIAL
[Vishay BC Components](#)

RFQ


CMF55140R00DHEB
 RES 140 OHM 1/2W 0.5% AXIAL
[Vishay Dale](#)

RFQ