

**AT29LV020-10JU-T**

**Microchip Technology**

IC FLASH 2MBIT 100NS 32PLCC

Lead free / RoHS Compliant

Integrated Circuits (ICs)

[AT29LV020-10JU-T.pdf](#)
**Buy Now**

We can supply AT29LV020-10JU-T, use the request quote form to request AT29LV020-10JU-T price and lead time. Zeano is a professional electronic components distributor. With 3+ Million line items of available electronic components can ship in short lead-time, over 250 thousand part numbers of electronic components in stock for immediately delivery, which may include part number AT29LV020-10JU-T. The price and lead time for AT29LV020-10JU-T depending on the quantity required and warehouse location. Contact us and our sales representative will provide you price. We look forward to work with you.

**Shopping Process**
**1**
**Confirm the product**
**2**
**submit the order**
**3**
**payment**
**4**
**wait for delivery**
**5**
**receive the goods**
**Specifications**

<b>Voltage - Supply:</b>	3 V ~ 3.6 V
<b>Speed:</b>	100ns
<b>Series:</b>	-
<b>Packaging:</b>	Tape & Reel (TR)
<b>Package / Case:</b>	32-LCC (J-Lead)
<b>Operating Temperature:</b>	-40°C ~ 85°C (TC)
<b>Memory Type:</b>	Non-Volatile
<b>Memory Size:</b>	2Mb (256K x 8)
<b>Memory Format:</b>	FLASH
<b>Interface:</b>	Parallel

**Related products**

**AT29LV020-12JI**

IC FLASH 2MBIT 120NS 32PLCC

[Microchip Technology](#)
**RFQ**

**AT29LV020-10TI**

IC FLASH 2MBIT 100NS 32TSOP

[Microchip Technology](#)
**RFQ**

**AT29LV020-10JC**

IC FLASH 2MBIT 100NS 32PLCC

[Microchip Technology](#)
**RFQ**

**AT29LV020-10JI**

IC FLASH 2MBIT 100NS 32PLCC

[Microchip Technology](#)
**RFQ**

**AT29LV020**

in stock

[ATMEL](#)
**RFQ**

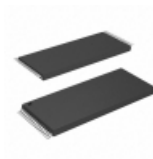
**AT29LV020-10JU**

IC FLASH 2MBIT 100NS 32PLCC

[Microchip Technology](#)
**RFQ**

**AT29LV020-12JC**

IC FLASH 2MBIT 120NS 32PLCC

[Microchip Technology](#)
**RFQ**

**AT29LV020-10TU**

IC FLASH 2MBIT 100NS 32TSOP

[Microchip Technology](#)
**RFQ**

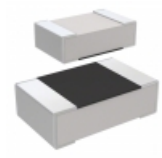
**AT29LV020-10TU-T**

IC FLASH 2MBIT 100NS 32TSOP

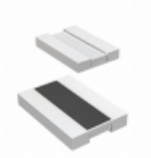
[Microchip Technology](#)
**RFQ**

**AT29LV010A-25TU**

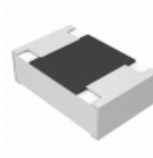
in stock

[ATMEL](#)
**RFQ**
**Guess You May Looking For**

**RC2012F3163CS**

RES SMD 316K OHM 1% 1/8W 0805

[Samsung Electro-Mechanics America, Inc.](#)
**RFQ**

**LTR10EZPJ7R5**

RES SMD 7.5 OHM 1/4W 0805 WIDE

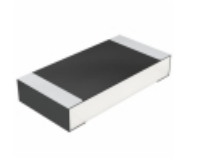
[Rohm Semiconductor](#)
**RFQ**

**ERJ-PB6D1963V**

RES SMD 196K OHM 0.5% 1/4W 0805

[Panasonic Electronic Components](#)
**RFQ**

**AF0402FR-076K04L**

RES SMD 6.04K OHM 1% 1/16W 0402

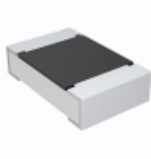
[Yageo](#)
**RFQ**

**CRCW12066K20FKEB**

RES SMD 6.2K OHM 1% 1/4W 1206

[Vishay Dale](#)
**RFQ**

**RT0402DRE07475RL**

RES SMD 475 OHM 0.5% 1/16W 0402

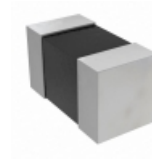
[Yageo](#)
**RFQ**

**CRCW08054K87FKTA**

RES SMD 4.87K OHM 1% 1/8W 0805

[Vishay Dale](#)
**RFQ**

**KTR10EZPJ330**

RES SMD 33 OHM 5% 1/8W 0805

[Rohm Semiconductor](#)
**RFQ**

**RT0201FRE0731K6L**

RES SMD 31.6K OHM 1% 1/20W 0201

[Yageo](#)
**RFQ**

**RT0201FRE0743KL**

RES SMD 43K OHM 1% 1/20W 0201

[Yageo](#)
**RFQ**