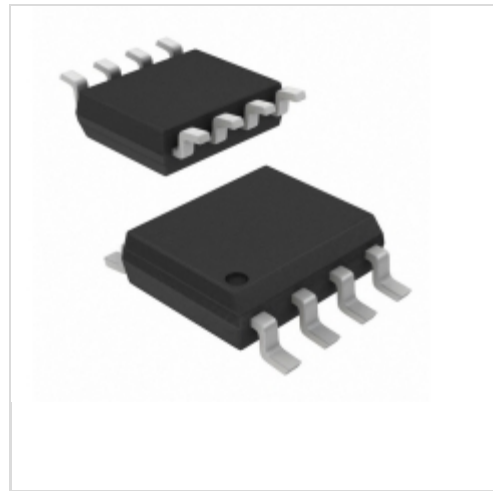


AP2820BMTR-G1



Diodes Incorporated

IC USB POWER SWITCH 8SOIC
Lead free / RoHS Compliant
Integrated Circuits (ICs)

[AP2820BMTR-G1.pdf](#)

[Buy Now](#)

Images are for reference only.

See Product Specifications for product details.

If you are interested to buy AP2820BMTR-G1, Just Email us.

Sales@zeanoit.com

our sales team will reply you within 24 hours

Shopping Process

1

Confirm the product

2

submit the order

3

payment

4

wait for delivery

5

receive the goods

Specifications

Voltage - Supply (Vcc/Vdd):	Not Required
Voltage - Load:	2.7 V ~ 5.5 V
Switch Type:	USB Switch
Supplier Device Package:	8-SOIC
Series:	-
Rds On (Typ):	60 mOhm
Ratio - Input:Output:	1:1
Packaging:	Tape & Reel (TR)
Package / Case:	8-SOIC (0.154", 3.90mm Width)
Output Type:	N-Channel
Output Configuration:	High Side
Operating Temperature:	-40°C ~ 85°C (TA)
Number of Outputs:	1
Interface:	On/Off
Input Type:	Non-Inverting
Features:	Status Flag
Fault Protection:	Current Limiting (Fixed), Over Temperature, Reverse Current, UVLO
Current - Output (Max):	2A

Related products



AP2820CMMTR-G1

IC USB POWER SWITCH 8MSOP
[Diodes Incorporated](#)

[RFQ](#)



AP2820BMM-G1

IC USB POWER SWITCH 8MSOP
[Diodes Incorporated](#)

[RFQ](#)



AP2820BMMTR-G1

IC USB POWER SWITCH 8MSOP
[Diodes Incorporated](#)

[RFQ](#)



AP2820CM-G1

IC USB POWER SWITCH 8SOIC
[Diodes Incorporated](#)

[RFQ](#)



AP2820BM-G1

IC USB POWER SWITCH 8SOIC
[Diodes Incorporated](#)

[RFQ](#)



AP2820CMM-G1

IC USB POWER SWITCH 8MSOP
[Diodes Incorporated](#)

[RFQ](#)



AP2820CMMTR-G1-01

IC USB POWER SWITCH 8MSOP
[Diodes Incorporated](#)

[RFQ](#)



AP2820CMTR-G1

IC USB POWER SWITCH 8SOIC
[Diodes Incorporated](#)

[RFQ](#)



AP2820AMTR-G1

IC USB POWER SWITCH
[Diodes Incorporated](#)

[RFQ](#)

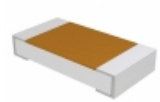


AP2820AWMMT-G1

[BCD](#)

[RFQ](#)

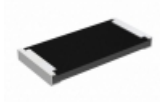
Guess You May Looking For



D55342K07B374BRT5

RES SMD 374K OHM 0.1% 1/4W 1206
[Vishay Dale](#)

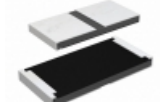
[RFQ](#)



RCP2512B20R0JS2

RES SMD 20 OHM 5% 22W 2512
[Vishay Dale](#)

[RFQ](#)



RCP2512W820RJEC

RES SMD 820 OHM 5% 22W 2512
[Vishay Dale](#)

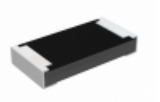
[RFQ](#)



M55342K06B5B23PT5

RES SMD 5.23KOHM 0.1% 0.15W 0805
[Vishay Dale](#)

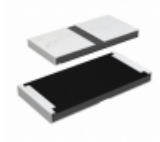
[RFQ](#)



RCP1206B15R0GS6

RES SMD 15 OHM 2% 11W 1206
[Vishay Dale](#)

[RFQ](#)



RCP2512W22R0JWB

RES SMD 22 OHM 5% 22W 2512
[Vishay Dale](#)

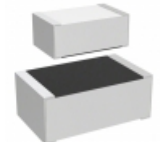
[RFQ](#)



Y40451K60000B0W

RES SMD 1.6K OHM 0.1% 1/20W 0505
[Vishay Foil Resistors \(Division of Vishay Precidio\)](#)

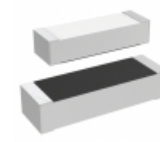
[RFQ](#)



M55342H06B150ERWS

RES SMD 150K OHM 1% 0.15W 0705
[Vishay Dale](#)

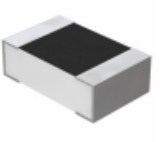
[RFQ](#)



M55342K04B30B1RWS

RES SMD 30.1KOHM 0.1% 0.15W 1505
[Vishay Dale](#)

[RFQ](#)



Y1624550R000Q0W

RES SMD 550 OHM 0.02% 1/5W 0805
[Vishay Foil Resistors \(Division of Vishay Precidio\)](#)

[RFQ](#)