

LM5107SDX/NOPB



N/A
 IC DRIVER GATE HALF BRIDGE 8WSON
 Lead free / RoHS Compliant
 Integrated Circuits (ICs)

Buy Now

Images are for reference only.

See Product Specifications for product details.

If you are interested to buy LM5107SDX/NOPB, Just Email us.

Sales@zeanoit.com

our sales team will reply you within 24 hours

Shopping Process



1
Confirm the product



2
submit the order



3
payment



4
wait for delivery



5
receive the goods

Specifications

Voltage - Supply:	8 V ~ 14 V
Supplier Device Package:	8-WSON (4x4)
Series:	-
Rise / Fall Time (Typ):	15ns, 15ns
Packaging:	Tape & Reel (TR)
Package / Case:	8-WDFN Exposed Pad
Operating Temperature:	-40°C ~ 125°C (TJ)
Number of Drivers:	2
Mounting Type:	Surface Mount
Logic Voltage - VIL, VIH:	0.8V, 2.2V
Input Type:	Non-Inverting
High Side Voltage - Max (Bootstrap):	118V
Gate Type:	N-Channel MOSFET
Driven Configuration:	Half-Bridge
Current - Peak Output (Source, Sink):	1.3A, 1.4A
Channel Type:	Independent

Related products



LM5107SD/NOPB
 IC DRIVER GATE HALF BRIDGE 8WSON
 N/A

[RFQ](#)



LM5107SD
 IC DRIVER GATE HALF BRIDGE 8WSON
 N/A

[RFQ](#)



LM5107MAX
 IC DVR HALF-BRIDGE HV 8-SOIC
 N/A

[RFQ](#)



LM5109AMA
 IC DVR HALF-BRIDGE 100V 1A 8SOIC
 N/A

[RFQ](#)



LM5107SDX
 IC DRIVER GATE HALF BRIDGE 8WSON
 N/A

[RFQ](#)



LM5109AMAX/NOPB
 IC DVR HALF-BRIDGE 100V 1A 8SOIC
 N/A

[RFQ](#)



LM5109ASD
 IC DVR HALF-BRIDGE 100V 1A 8WSON
 N/A

[RFQ](#)



LM5109AMAX
 IC DVR HALF-BRIDGE 100V 1A 8SOIC
 N/A

[RFQ](#)



LM5109AMA/NOPB
 IC DVR HALF-BRIDGE 100V 1A 8SOIC
 N/A

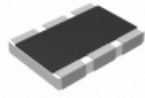
[RFQ](#)



LM5107MAX/NOPB
 IC DVR HALF-BRIDGE HV 8-SOIC
 N/A

[RFQ](#)

Guess You May Looking For



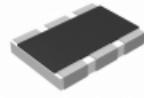
AA1218FK-0715K4L
 RES SMD 15.4K OHM 1W 1812 WIDE
[Yageo](#)

[RFQ](#)



RNCF2010BTE105R
 RES SMD 105 OHM 0.1% 1/3W 2010
[Stackpole Electronics Inc.](#)

[RFQ](#)



AA1218FK-072R94L
 RES SMD 2.94 OHM 1W 1812 WIDE
[Yageo](#)

[RFQ](#)



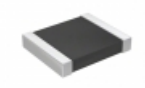
RNCF1210BTC3K60
 RES SMD 3.6K OHM 0.1% 1/3W 1210
[Stackpole Electronics Inc.](#)

[RFQ](#)



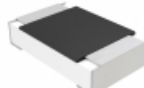
RNCF2512BTC243R
 RES SMD 243 OHM 0.1% 3/4W 2512
[Stackpole Electronics Inc.](#)

[RFQ](#)



RT1210CRD07300RL
 RES SMD 300 OHM 0.25% 1/4W 1210
[Yageo](#)

[RFQ](#)



MCU08050D8660BP100
 RES SMD 866 OHM 0.1% 1/8W 0805
[Vishay Beyschlag](#)

[RFQ](#)



RG1608N-362-B-T5
 RES SMD 3.6K OHM 0.1% 1/10W 0603
[Susumu](#)

[RFQ](#)



RCL12255K90FKEG
 RES SMD 5.9K OHM 2W 2512 WIDE
[Vishay Dale](#)

[RFQ](#)



RNCF2512BTE118R
 RES SMD 118 OHM 0.1% 3/4W 2512
[Stackpole Electronics Inc.](#)

[RFQ](#)