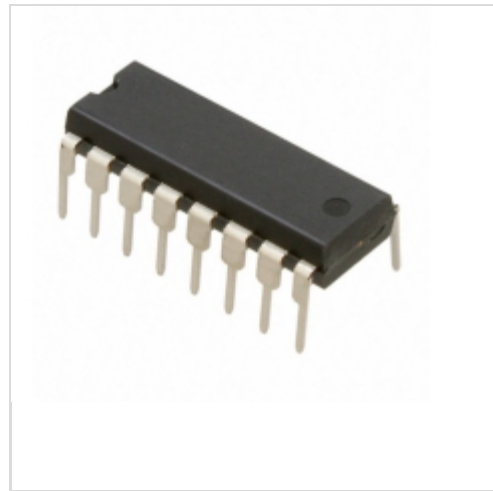


**NJM3717D2**



**JRC Corporation / NJRC**

IC MOTOR DRIVER PAR 16DIP  
Lead free / RoHS Compliant  
Integrated Circuits (ICs)

[NJM3717D2.pdf](#)

**Buy Now**

Images are for reference only.

See Product Specifications for product details.

If you are interested to buy NJM3717D2,Just Email us.

Sales@zeanoit.com

our sales team will reply you within 24 hours

**Out Stock**

**0 pcs**

Minimum:1

Multiples:100

Manufacturer lead time 10 weeks

**PRICE**

1 pcs	\$5.04
10 pcs	\$4.50
25 pcs	\$4.05
100 pcs	\$3.69
250 pcs	\$3.33
500 pcs	\$2.988
1000 pcs	\$2.52
2500 pcs	\$2.394

**Shopping Process**

**1**

**Confirm the product**

**2**

**submit the order**

**3**

**payment**

**4**

**wait for delivery**

**5**

**receive the goods**

**Specifications**

<b>Voltage - Supply:</b>	4.75 V ~ 5.25 V
<b>Voltage - Load:</b>	10 V ~ 45 V
<b>Technology:</b>	Bipolar
<b>Supplier Device Package:</b>	16-DIP
<b>Step Resolution:</b>	1, 1/2
<b>Series:</b>	-
<b>Packaging:</b>	Tube
<b>Package / Case:</b>	16-DIP (0.325", 8.25mm)
<b>Output Configuration:</b>	Half Bridge (2)
<b>Operating Temperature:</b>	-20°C ~ 125°C (TJ)
<b>Mounting Type:</b>	Through Hole
<b>Motor Type - Stepper:</b>	Bipolar
<b>Motor Type - AC, DC:</b>	-
<b>Interface:</b>	Parallel
<b>Function:</b>	Driver - Fully Integrated, Control and Power Stage
<b>Current - Output:</b>	1A
<b>Applications:</b>	General Purpose

**Related products**



**NJM360M(Te1)**

JRC

**RFQ**



**NJM360D**

in stock  
JRC

**RFQ**



**NJM3737R**

JRC

**RFQ**



**NJM360M-TE1**

JRC

**RFQ**



**NJM360E**

JRC

**RFQ**



**NJM3717FM2**

IC MOTOR DRIVER PAR 28PLCC  
NJRC Corporation/NJRC

**RFQ**



**NJM3770AD3**

IC MOTOR DRIVER PAR 16DIP  
NJRC Corporation/NJRC

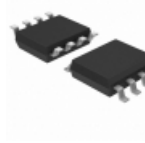
**RFQ**



**NJM3717FM**

IC MOTOR DRIVER PAR 28PLCC  
NJRC Corporation/NJRC

**RFQ**



**NJM360M**

IC COMPARATOR DIFF HS 8-DMP  
NJRC Corporation/NJRC

**RFQ**

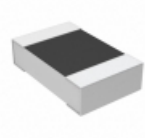


**NJM3717E2-TE2**

in stock  
JRC

**RFQ**

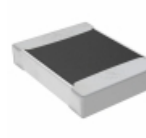
**Guess You May Looking For**



**RP73D2A475RBTG**

RES SMD 475 OHM 0.1% 1/8W 0805  
TE Connectivity Passive Product

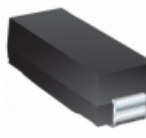
**RFQ**



**TNPW12105K60BEEN**

RES SMD 5.6K OHM 0.1% 1/3W 1210  
Vishay Dale

**RFQ**



**PWR4525WR360J**

RES SMD 0.36 OHM 5% 2W 4525  
Bourns Inc.

**RFQ**



**RG2012V-2740-W-T5**

RES SMD 274 OHM 0.05% 1/8W 0805  
Susumu

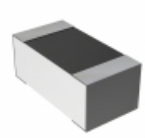
**RFQ**



**RG3216V-1781-D-T5**

RES SMD 1.78K OHM 0.5% 1/4W 1206  
Susumu

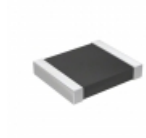
**RFQ**



**2-1879361-2**

RES SMD 9.53KOHM 0.1% 1/16W 0603  
TE Connectivity Passive Product

**RFQ**



**RT1210WRD0771R5L**

RES SMD 71.5 OHM 0.05% 1/4W 1210  
Yageo

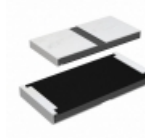
**RFQ**



**RG1005V-1070-W-T1**

RES SMD 107 OHM 0.05% 1/16W 0402  
Susumu

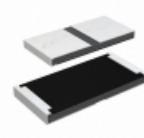
**RFQ**



**RCP2512W1K50JTP**

RES SMD 1.5K OHM 5% 22W 2512  
Vishay Dale

**RFQ**



**RCP2512W1K50JEJ**

RES SMD 1.5K OHM 5% 22W 2512  
Vishay Dale

**RFQ**

