

SMBJ150C-T



MIC
Semiconductor

Buy Now

part#SMBJ150C-T is available, see description of SMBJ150C-T as below .
use the request quote form to request SMBJ150C-T price and lead time.
Buy Electronic Components at zeanoit.com .we are an independent distributor of electronic components with extensive inventory in stock.
The price and lead time for SMBJ150C-T depending on the quantity required, availability and warehouse location.Contact us today and our sales team will send you quotation soon.
Email: sales@zeanoit.com

Shopping Process

1

Confirm the product

2

submit the order

3

payment

4

wait for delivery

5

receive the goods

Specifications

Related products



SMBJ150CA
TVS DIODE 150VWM 243VC DO214AA
[Bourns Inc.](#)

RFQ



SMBJ150AHE3/5B
TVS DIODE 150VWM 243VC SMB
[Vishay Semiconductor Diodes Division](#)

RFQ



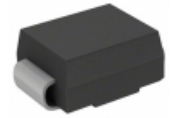
SMBJ150C-E3/52
TVS DIODE 150VWM 268VC SMB
[Vishay Semiconductor Diodes Division](#)

RFQ



SMBJ150CA
TVS DIODE 150VWM 243VC SMB
[Fairchild/ON Semiconductor](#)

RFQ



SMBJ150CA
TVS DIODE 150VWM 243VC SMB
[Littelfuse Inc.](#)

RFQ



SMBJ150C
TVS DIODE 150VWM 255.15VC SMT
[Littelfuse Inc.](#)

RFQ



SMBJ150CA-13
TVS DIODE 150VWM 243VC SMB
[Diodes Incorporated](#)

RFQ



SMBJ150CA-13-F
TVS DIODE 150VWM 243VC SMB
[Diodes Incorporated](#)

RFQ



SMBJ150ATR
TVS DIODE 150VWM 243VC SMB
[SMC Diode Solutions](#)

RFQ



SMBJ150C-E3/5B
TVS DIODE 150VWM 268VC SMB
[Vishay Semiconductor Diodes Division](#)

RFQ

Guess You May Looking For



MN6260C
in stock
[PAN](#)

RFQ



M5201L
in stock
[MIT](#)

RFQ



BCM5784MKMLG
in stock
[BROA](#)

RFQ



MAX2102CWI
in stock
[MAXIM](#)

RFQ



MRF545
in stock
[MOTOROLA](#)

RFQ



BCM2055KFB-P11
in stock
[BROADCOM](#)

RFQ



XC2VPX20-5FFG896C
Virtex-II Pro and Virtex-II Pro X Platform
FPGAs
[XILINX](#)

RFQ



XCS20XL-3TQ84I
Spartan and Spartan-XL Families Field
Programmable Gate Arrays
[XILINX](#)

RFQ



XC2V80-6BG575I
Virtex-II 1.5V Field-Programmable Gate
Arrays
[XILINX](#)

RFQ



XC1704LPC44I
Configuration PROMs
[XILINX](#)

RFQ