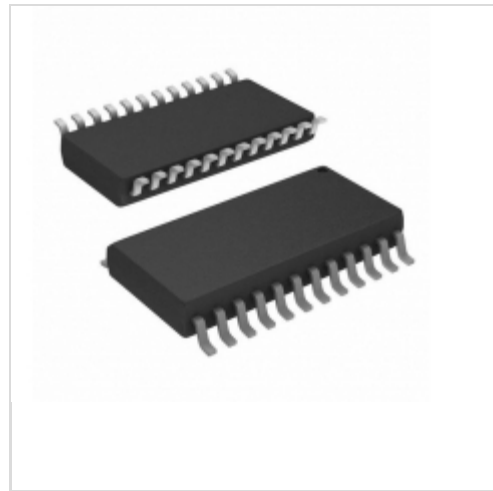


## STP16CL596MTR



[STMicroelectronics](#)

IC LED DRIVER LINEAR 90MA 24SO

Lead free / RoHS Compliant

Integrated Circuits (ICs)

[STP16CL596MTR.pdf](#)

[Buy Now](#)

We can supply STMicroelectronics STP16CL596MTR, use the request quote form to request STP16CL596MTR price, STMicroelectronics Datasheet PDF and lead time. Zeanoit.com is a professional electronic components distributor. With 3+ Million line items of available electronic components can ship in short lead-time, over 250 thousand part numbers of electronic components in stock for immediately delivery, which may include part number STP16CL596MTR. The price and lead time for STP16CL596MTR depending on the quantity required, availability and warehouse location.

**Out Stock**

0 pcs

Minimum:1

Multiples:100

Manufacturer lead time 10 weeks

### PRICE

1 pcs	\$2.55
10 pcs	\$2.293
100 pcs	\$1.843
500 pcs	\$1.514

## Shopping Process

1

Confirm the product

2

submit the order

3

payment

4

wait for delivery

5

receive the goods

## Specifications

<b>Voltage - Supply (Min):</b>	3V
<b>Voltage - Supply (Max):</b>	3.6V
<b>Voltage - Output:</b>	16V
<b>Type:</b>	Linear
<b>Topology:</b>	Shift Register
<b>Supplier Device Package:</b>	24-SO
<b>Series:</b>	-
<b>Packaging:</b>	Cut Tape (CT)
<b>Package / Case:</b>	24-SOIC (0.295", 7.50mm Width)
<b>Operating Temperature:</b>	-40°C ~ 125°C (TA)
<b>Number of Outputs:</b>	16
<b>Mounting Type:</b>	Surface Mount
<b>Internal Switch(s):</b>	Yes
<b>Frequency:</b>	25MHz
<b>Dimming:</b>	-
<b>Current - Output / Channel:</b>	90mA
<b>Applications:</b>	-

## Related products



**STP16C596XTTR**

IC LED DRIVER LIN 120MA 24TSSOP

[STMicroelectronics](#)

RFQ



**STP16CP05B1R**

IC LED DRIVER LINEAR 100MA 24DIP

[STMicroelectronics](#)

RFQ



**STP16CL596XTTR**

IC LED DRIVER LIN 90MA 24TSSOP

[STMicroelectronics](#)

RFQ



**STP16CL596**

in stock

[ST](#)

RFQ



**STP16C596TTTR**

IC LED DRIVER LIN 120MA 24TSSOP

[STMicroelectronics](#)

RFQ



**STP16CL596TTR**

IC LED DRIVER LIN 90MA 24TSSOP

[STMicroelectronics](#)

RFQ



**STP16CL596M**

IC LED DRIVER LINEAR 90MA 24SO

[STMicroelectronics](#)

RFQ



**STP16CL596B1R**

IC LED DRIVER LINEAR 90MA 24DIP

[STMicroelectronics](#)

RFQ



**STP16CP05**

in stock

[ST](#)

RFQ



**STP16CP05MTR**

IC LED DRIVER LINEAR 100MA 24SO

[STMicroelectronics](#)

RFQ

## Guess You May Looking For

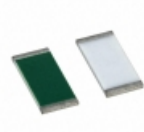


**RT0805WRC071K78L**

RES SMD 1.78KOHM 0.05% 1/8W 0805

[Yageo](#)

RFQ



**PAT0603E5830BST1**

RES SMD 583 OHM 0.1% 0.15W 0603

[Vishay Thin Film](#)

RFQ



**CSSH2512FT5L00**

RES SMD 0.005 OHM 1% 3W 2512

[Stackpole Electronics Inc.](#)

RFQ



**RG1005N-97R6-W-T1**

RES SMD 97.6OHM 0.05% 1/16W 0402

[Susumu](#)

RFQ



**RG1005N-68R1-W-T1**

RES SMD 68.1OHM 0.05% 1/16W 0402

[Susumu](#)

RFQ

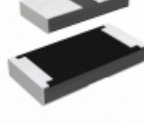


**RG3216N-75R0-W-T1**

RES SMD 75 OHM 0.05% 1/4W 1206

[Susumu](#)

RFQ

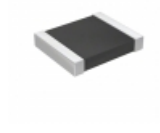


**RCP1206W160RGEA**

RES SMD 160 OHM 2% 11W 1206

[Vishay Dale](#)

RFQ



**RT1210WRB075K6L**

RES SMD 5.6K OHM 0.05% 1/4W 1210

[Yageo](#)

RFQ

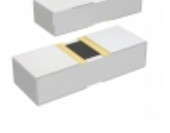


**PTN1206E1822BST1**

RES SMD 18.2K OHM 0.1% 0.4W 1206

[Vishay Thin Film](#)

RFQ



**PHP00603E11R5BST1**

RES SMD 11.5 OHM 0.1% 3/8W 0603

[Vishay Thin Film](#)

RFQ

