

**MAX6352TZUK+T**

**Maxim Integrated**

IC SUPERVISOR MPU SOT23-5

Lead free / RoHS Compliant

Integrated Circuits (ICs)

[1.MAX6352TZUK+T.pdf](#)
[2.MAX6352TZUK+T.pdf](#)

Images are for reference only.

See Product Specifications for product details.

If you are interested to buy MAX6352TZUK+T,Just Email us.

[Sales@zeanoit.com](mailto:Sales@zeanoit.com)

our sales team will reply you within 24 hours

**Out Stock**
**0 pcs**

Minimum:1

Multiples:100

Manufacturer lead time 10 weeks

**PRICE**

|         |        |
|---------|--------|
| 1 pcs   | \$4.87 |
| 10 pcs  | \$4.59 |
| 25 pcs  | \$3.67 |
| 50 pcs  | \$3.49 |
| 100 pcs | \$3.21 |
| 250 pcs | \$3.05 |
| 500 pcs | \$2.30 |

**Shopping Process**
**1**
**Confirm the product**
**2**
**submit the order**
**3**
**payment**
**4**
**wait for delivery**
**5**
**receive the goods**
**Specifications**

|                                      |                              |
|--------------------------------------|------------------------------|
| <b>Voltage - Threshold:</b>          | 2.32V, 3.08V                 |
| <b>Type:</b>                         | Multi-Voltage Supervisor     |
| <b>Supplier Device Package:</b>      | SOT-23-5                     |
| <b>Series:</b>                       | -                            |
| <b>Reset Timeout:</b>                | 100 ms Minimum               |
| <b>Reset:</b>                        | Active Low                   |
| <b>Packaging:</b>                    | Tape & Reel (TR)             |
| <b>Package / Case:</b>               | SC-74A, SOT-753              |
| <b>Output:</b>                       | Open Drain or Open Collector |
| <b>Operating Temperature:</b>        | -40°C ~ 85°C (TA)            |
| <b>Number of Voltages Monitored:</b> | 2                            |
| <b>Mounting Type:</b>                | Surface Mount                |

**Related products**

**MAX6352\_\_UK-T**

in stock

[MAXIM](#)

RFQ


**MAX6352TZUK**
[MAXIM](#)

RFQ


**MAX6353LRUK-T**

in stock

[MAXIM](#)

RFQ


**MAX6352TWUK+T**

IC SUPERVISOR MPU SOT23-5

[Maxim Integrated](#)

RFQ


**MAX6352TYUK-T**

in stock

[MAXIM](#)

RFQ


**MAX6352TYUT-T**

in stock

[MAXIM](#)

RFQ


**MAX6353LRUT-T**

in stock

[MAXIM](#)

RFQ


**MAX6353LSUK+T**

IC SUPERVISOR MPU SOT23-5

[Maxim Integrated](#)

RFQ


**MAX6353**

in stock

[MAXIM](#)

RFQ


**MAX6352SYUT-T**

in stock

[MAXIM](#)

RFQ

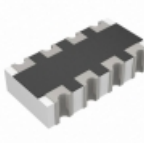
**Guess You May Looking For**

**9T06031A16R2BBHFT**

RES SMD 16.2 OHM 0.1% 1/10W 0603

[Yageo](#)

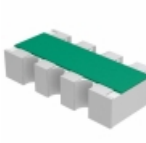
RFQ


**TC124-FR-0730K9L**

RES ARRAY 4 RES 30.9K OHM 0804

[Yageo](#)

RFQ


**MNR04M0APJ152**

RES ARRAY 4 RES 1.5K OHM 0804

[Rohm Semiconductor](#)

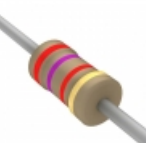
RFQ


**77083681**

RES ARRAY 4 RES 680 OHM 8SIP

[CTS Resistor Products](#)

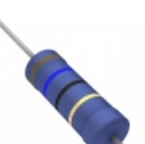
RFQ


**CF18JT2K70**

RES 2.7K OHM 1/8W 5% AXIAL

[Stackpole Electronics Inc.](#)

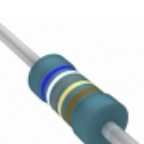
RFQ


**RSF5JB16R0**

RES 16 OHM 5W 5% AXIAL

[Stackpole Electronics Inc.](#)

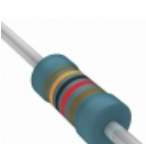
RFQ


**MRS25000C6989FRP00**

RES 69.8 OHM 0.6W 1% AXIAL

[Vishay BC Components](#)

RFQ


**MRS25000C1302FC100**

RES 13K OHM 0.6W 1% AXIAL

[Vishay BC Components](#)

RFQ


**CMF55178K00FHRE70**

RES 178K OHM 1/2W 1% AXIAL

[Vishay Dale](#)

RFQ


**RN60D1781FRE6**

RES 1.78K OHM 1/4W 1% AXIAL

[Vishay Dale](#)

RFQ