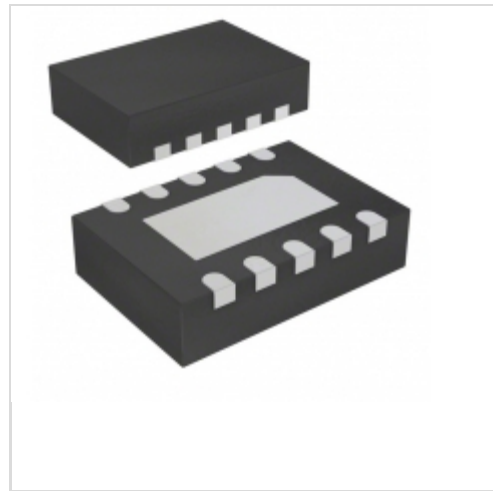


MAX17501EATB+T



Maxim Integrated

IC REG BCK 3.3V 0.5A SYNC 10TDFN
Lead free / RoHS Compliant
Integrated Circuits (ICs)

- [1.MAX17501EATB+T.pdf](#)
- [2.MAX17501EATB+T.pdf](#)
- [3.MAX17501EATB+T.pdf](#)

Buy Now

Out Stock

0 pcs

Minimum:1

Multiples:100

Manufacturer lead time 10 weeks

We can supply Maxim Integrated MAX17501EATB+T, use the request quote form to request MAX17501EATB+T price, Maxim Integrated Datasheet PDF and lead time. Zeanoit.com is a professional electronic components distributor. With 3+ Million line items of available electronic components can ship in short lead-time, over 250 thousand part numbers of electronic components in stock for immediately delivery, which may include part number MAX17501EATB+T. The price and lead time for MAX17501EATB+T depending on the quantity required, availability and warehouse location.

Shopping Process

1

Confirm the product

2

submit the order

3

payment

4

wait for delivery

5

receive the goods

Specifications

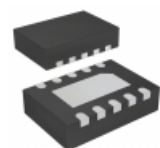
| | |
|--------------------------------------|---------------------|
| Voltage - Output (Min/Fixed): | 3.3V |
| Voltage - Output (Max): | - |
| Voltage - Input (Min): | 4.5V |
| Voltage - Input (Max): | 60V |
| Topology: | Buck |
| Synchronous Rectifier: | Yes |
| Supplier Device Package: | 10-TDFN (3x2) |
| Series: | Himalaya |
| Packaging: | Tape & Reel (TR) |
| Package / Case: | 10-WDFN Exposed Pad |
| Output Type: | Fixed |
| Output Configuration: | Positive |
| Operating Temperature: | -40°C ~ 125°C (TJ) |
| Number of Outputs: | 1 |
| Mounting Type: | Surface Mount |
| Function: | Step-Down |
| Frequency - Switching: | 600kHz |
| Current - Output: | 500mA |

Related products



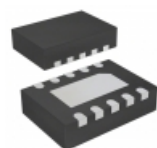
MAX17501FTEVKIT#
KIT EVAL FOR MAX17501F
[Maxim Integrated](#)

RFQ



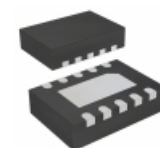
MAX17501EATB+
IC REG BCK 3.3V 0.5A SYNC 10TDFN
[Maxim Integrated](#)

RFQ



MAX17501FATB+
IC REG BUCK 5V 0.5A SYNC 10TDFN
[Maxim Integrated](#)

RFQ



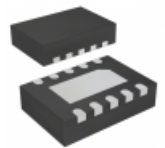
MAX17501BATB+T
IC REG BUCK 5V 0.5A SYNC 10TDFN
[Maxim Integrated](#)

RFQ



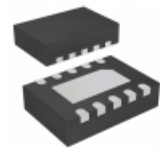
MAX17501ETEVKIT#
KIT EVAL FOR MAX17501E
[Maxim Integrated](#)

RFQ



MAX17501BATB+
IC REG BUCK 5V 0.5A SYNC 10TDFN
[Maxim Integrated](#)

RFQ



MAX17501FATB+T
IC REG BUCK 5V 0.5A SYNC 10TDFN
[Maxim Integrated](#)

RFQ



MAX17501ATEVKIT#
KIT EVAL FOR MAX17501A
[Maxim Integrated](#)

RFQ



MAX17501EVKIT+
KIT EVALUATION FOR MAX17501
[Maxim Integrated](#)

RFQ



MAX17501BTEVKIT#
KIT EVAL FOR MAX17501B
[Maxim Integrated](#)

RFQ

Guess You May Looking For



1-213438-0
RM2R67P57P-00 200
[TE Connectivity Aerospace, Defense and Marine](#)

RFQ



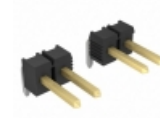
CA3106E14S-5PX13
CONN PLUG SPOS INLINE W/PINS
[ITT Cannon, LLC](#)

RFQ



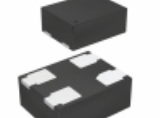
DAME-15S-A197
CONN D-SUB RCPT 15POS PNL MNT
[ITT Cannon, LLC](#)

RFQ



9-146304-0-17
CONN HEADR BRKWAY .100 17POS R/A
[TE Connectivity AMP Connectors](#)

RFQ



SIT1602BI-73-25N-10.000000D
-40 TO 85C, 2016, 50PPM, 2.5V, 1
[SITIME](#)

RFQ



SIT1602BC-71-18S-25.000625D
-20 TO 70C, 2016, 20PPM, 1.8V, 2
[SITIME](#)

RFQ



SIT1602BC-82-25E-18.432000T
-20 TO 70C, 7050, 25PPM, 2.5V, 1
[SITIME](#)

RFQ



SIT1602AI-82-33E-75.000000T
OSC XO 3.3V 75MHZ OE
[SITIME](#)

RFQ



HDWM-16-01-G-D-330
.050" BOARD SPACERS
[Samtec Inc.](#)

RFQ



SIT1602BC-13-18E-32.768000E
-20 TO 70C, 2520, 50PPM, 1.8V, 3
[SITIME](#)

RFQ

