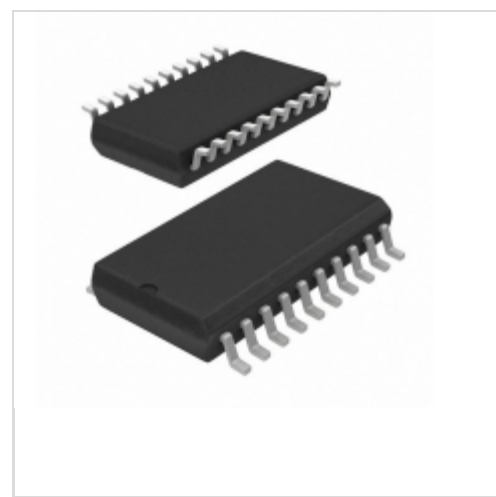


## HIP4080AIBT



**Intersil**

IC DRIVER FULL BRIDGE FET 20SOIC  
Contains lead / RoHS non-compliant  
Integrated Circuits (ICs)

[HIP4080AIBT.pdf](#)

**Buy Now**

**Out Stock**

**0 pcs**

Minimum:1

Multiples:100

Manufacturer lead time 10 weeks

We can supply HIP4080AIBT, use the request quote form to request HIP4080AIBT price and lead time. Zeano is a professional electronic components distributor. With 3+ Million line items of available electronic components can ship in short lead-time, over 250 thousand part numbers of electronic components in stock for immediately delivery, which may include part number HIP4080AIBT. The price and lead time for HIP4080AIBT depending on the quantity required and warehouse location. Contact us and our sales representative will provide you price. We look forward to work with you.

### Shopping Process

**1**

**Confirm the product**

**2**

**submit the order**

**3**

**payment**

**4**

**wait for delivery**

**5**

**receive the goods**

### Specifications

<b>Voltage - Supply:</b>	9.5 V ~ 15 V
<b>Supplier Device Package:</b>	20-SOIC
<b>Series:</b>	-
<b>Rise / Fall Time (Typ):</b>	10ns, 10ns
<b>Packaging:</b>	Tape & Reel (TR)
<b>Package / Case:</b>	20-SOIC (0.295", 7.50mm Width)
<b>Operating Temperature:</b>	-40°C ~ 125°C (TJ)
<b>Number of Drivers:</b>	4
<b>Mounting Type:</b>	Surface Mount
<b>Logic Voltage - VIL, VIH:</b>	1V, 2.5V
<b>Input Type:</b>	Non-Inverting
<b>High Side Voltage - Max (Bootstrap):</b>	95V
<b>Gate Type:</b>	N-Channel MOSFET
<b>Driven Configuration:</b>	Half-Bridge
<b>Current - Peak Output (Source, Sink):</b>	2.6A, 2.4A
<b>Channel Type:</b>	Synchronous

### Related products



**HIP4080AIB**  
IC DRIVER FULL-BRIDGE 20-SOIC  
[Intersil](#)

RFQ



**HIP4080AIP**  
IC DRIVER FULL-BRIDGE 20-DIP  
[Intersil](#)

RFQ



**HIP4020IBZ**  
IC DRIVER FULL-BRIDGE 20-SOIC  
[Intersil](#)

RFQ



**HIP4080AIPZ**  
IC DRIVER FET FULL BRIDGE 20DIP  
[Intersil](#)

RFQ



**HIP4020IBZT**  
IC DRIVER FULL-BRIDGE 20-SOIC  
[Intersil](#)

RFQ



**HIP4080IB**  
in stock  
[HARRIS](#)

RFQ



**HIP4080A/81AEVALZ**  
DEMO BOARD FOR HIP4081A  
[Intersil](#)

RFQ



**HIP4080AEVAL**  
EVALUATION BOARD HIP4080/4081  
[Intersil](#)

RFQ



**HIP4080AIBZT**  
IC DRIVER FET FULL 80V 20-SOIC  
[Intersil](#)

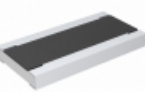
RFQ



**HIP4080AIBZ**  
IC DRIVER FULL-BRIDGE 20-SOIC  
[Intersil](#)

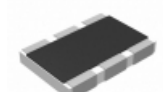
RFQ

### Guess You May Looking For



**RCWE0612R383FKEA**  
RES SMD 0.383 OHM 1% 1W 0612  
[Vishay Dale](#)

RFQ



**RC1218DK-07481RL**  
RES SMD 481 OHM 1W 1812 WIDE  
[Yageo](#)

RFQ



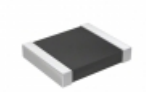
**RNCF1210BTC165R**  
RES SMD 165 OHM 0.1% 1/3W 1210  
[Stackpole Electronics Inc.](#)

RFQ



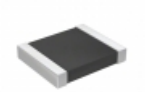
**RNCF2512BTC25R5**  
RES SMD 25.5 OHM 0.1% 1W 2512  
[Stackpole Electronics Inc.](#)

RFQ



**RT1210CRD075K76L**  
RES SMD 5.76KOHM 0.25% 1/4W 1210  
[Yageo](#)

RFQ



**RT1210CRD07634RL**  
RES SMD 634 OHM 0.25% 1/4W 1210  
[Yageo](#)

RFQ



**RT0805WRE071K07L**  
RES SMD 1.07KOHM 0.05% 1/8W 0805  
[Yageo](#)

RFQ



**RT0805WRE0778R7L**  
RES SMD 78.7 OHM 0.05% 1/8W 0805  
[Yageo](#)

RFQ



**RCL1225511RFKEG**  
RES SMD 511 OHM 2W 2512 WIDE  
[Vishay Dale](#)

RFQ



**RT0805WRD072K71L**  
RES SMD 2.71KOHM 0.05% 1/8W 0805  
[Yageo](#)

RFQ