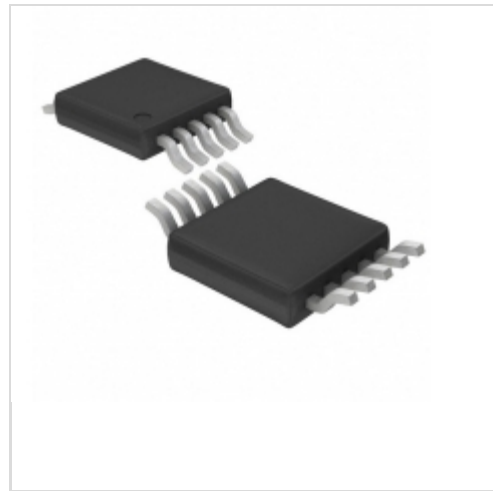


**LTC1957-2EMS#TRPBF**



[Linear Technology / Analog Devices](#)

IC RF PWR CNTRL 2GHZ DUAL 10MSOP

Lead free / RoHS Compliant

RF/IF and RFID

[LTC1957-2EMS#TRPBF.pdf](#)

**Buy Now**

**Out Stock**

**0 pcs**

Minimum:1

Multiples:100

Manufacturer lead time 10 weeks

We can supply LTC1957-2EMS#TRPBF, use the request quote form to request LTC1957-2EMS#TRPBF price and lead time. Zeano is a professional electronic components distributor. With 3+ Million line items of available electronic components can ship in short lead-time, over 250 thousand part numbers of electronic components in stock for immediately delivery, which may include part number LTC1957-2EMS#TRPBF. The price and lead time for LTC1957-2EMS#TRPBF depending on the quantity required and warehouse location. Contact us and our sales representative will provide you price. We look forward to work with you.

Shopping Process

**1**

**Confirm the product**

**2**

**submit the order**

**3**

**payment**

**4**

**wait for delivery**

**5**

**receive the goods**

Specifications

<b>Supplier Device Package:</b>	10-MSOP
<b>Series:</b>	-
<b>RF Type:</b>	Cellular, GSM, GPRS, PCS, Wireless Modem, TDMA
<b>Packaging:</b>	Tape & Reel (TR)
<b>Package / Case:</b>	10-TFSOP, 10-MSOP (0.118", 3.00mm Width)
<b>Frequency:</b>	850MHz ~ 2GHz
<b>Features:</b>	Dual Output

Related products



**LTC1960CG**

[LINEAR](#)

RFQ



**LTC1957-2EMS#TR**

[LINEAR](#)

RFQ



**LTC1957-1EMS8#TRPBF**

IC RF PWR CNTRL 2GHZ SGL 8MSOP  
[Linear Technology](#)

RFQ



**LTC1957-2EMS**

[LINEAR](#)

RFQ



**LTC1957-2EMS#PBF**

IC RF PWR CNTRL 2GHZ DUAL 10MSOP  
[Linear Technology](#)

RFQ



**LTC1960CG#TR**

[LT](#)

RFQ



**LTC1957-1EMS8#PBF**

IC RF PWR CNTRL 2GHZ SGL 8MSOP  
[Linear Technology](#)

RFQ



**LTC1959IS8#TRPBF**

[LINEAR](#)

RFQ



**LTC1960CG#TRPBF**

IC BATT CHRGR/SELECTR DUAL36SSOP  
[Linear Technology](#)

RFQ



**LTC1960CG#PBF**

IC BATT CHRGR/SELECTR DUAL36SSOP  
[Linear Technology](#)

RFQ

Guess You May Looking For



**S1-22RF1**

RES SMD 22 OHM 1% 1/2W 1913  
[Riedon](#)

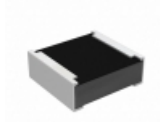
RFQ



**RCP0505W390RJEB**

RES SMD 390 OHM 5% 5W 0505  
[Vishay Dale](#)

RFQ



**RCP0505B47R0JS3**

RES SMD 47 OHM 5% 5W 0505  
[Vishay Dale](#)

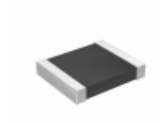
RFQ



**FCSL110R020FER**

RES SMD 0.02 OHM 5W 4320 WIDE  
[Ohmite](#)

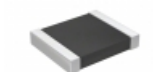
RFQ



**RT1210WRD071KL**

RES SMD 1K OHM 0.05% 1/4W 1210  
[Yageo](#)

RFQ



**RT1210WRD0727RL**

RES SMD 27 OHM 0.05% 1/4W 1210  
[Yageo](#)

RFQ



**RG1608V-4990-W-T1**

RES SMD 499 OHM 0.05% 1/10W 0603  
[Susumu](#)

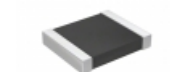
RFQ



**RG1005V-1620-W-T5**

RES SMD 162 OHM 0.05% 1/16W 0402  
[Susumu](#)

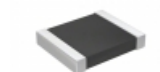
RFQ



**RT1210WRD07300KL**

RES SMD 300K OHM 0.05% 1/4W 1210  
[Yageo](#)

RFQ



**RT1210WRD0713K3L**

RES SMD 13.3KOHM 0.05% 1/4W 1210  
[Yageo](#)

RFQ