

**LX1563IDM**



**Microsemi**  
IC CONTROLLER PFC 9.8V 8SOIC  
Lead free / RoHS Compliant  
Integrated Circuits (ICs)

[LX1563IDM.pdf](#)

**Buy Now**

**In Stock**  
**11 pcs**  
Minimum:1  
Multiples:100  
Manufacturer lead time 10 weeks

PRICE	
1 pcs	\$2.95
10 pcs	\$2.66

Images are for reference only.  
See Product Specifications for product details.  
If you are interested to buy LX1563IDM,Just Email us.  
Sales@zeanoit.com  
our sales team will reply you within 24 hours

Shopping Process

**1**

Confirm the product

**2**

submit the order

**3**

payment

**4**

wait for delivery

**5**

receive the goods

Specifications

<b>Voltage - Supply:</b>	11 V ~ 25 V
<b>Supplier Device Package:</b>	8-SOIC
<b>Series:</b>	-
<b>Packaging:</b>	Tube
<b>Package / Case:</b>	8-SOIC (0.154", 3.90mm Width)
<b>Operating Temperature:</b>	0°C ~ 100°C
<b>Mounting Type:</b>	Surface Mount
<b>Mode:</b>	Discontinuous Conduction (DCM)
<b>Frequency - Switching:</b>	1.7MHz
<b>Current - Startup:</b>	200µA

Related products



**LX1563IN**  
MICROSEMI

RFQ



**LX1562IDM**  
IC CONTROLLER PFC 13.1V 8SOIC  
Microsemi Corporation

RFQ



**LX1563**  
LXCOR

RFQ



**LX1555MY**  
IC REG CTRLR BUCK/BOOST 8DIP  
Microsemi Corporation

RFQ



**LX1563IM**  
IC CONTROLLER PFC 9.8V 8DIP  
Microsemi Corporation

RFQ



**LX1570CM**  
IC SECONDARY SIDE CTRLR 8DIP  
Microsemi Corporation

RFQ



**LX1562IM**  
IC PFC CONTROLLER 8DIP  
Microsemi Corporation

RFQ



**LX1563I**  
LINFINITY

RFQ



**LX1570IDM**  
IC SECONDARY SIDE CTRLR 8SOIC  
Microsemi Corporation

RFQ



**LX1570CDM**  
IC SECONDARY SIDE CTRLR 8SOIC  
Microsemi Corporation

RFQ

Guess You May Looking For



**RG2012V-6651-P-T1**  
RES SMD 6.65KOHM 0.02% 1/8W 0805  
Susumu

RFQ



**RT0603WRB077R15L**  
RES SMD 7.15OHM 0.05% 1/10W 0603  
Yageo

RFQ



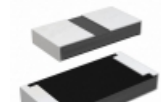
**RG3216V-8660-B-T5**  
RES SMD 866 OHM 0.1% 1/4W 1206  
Susumu

RFQ



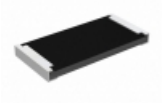
**RCP0603B120RJEC**  
RES SMD 120 OHM 5% 3.9W 0603  
Vishay Dale

RFQ



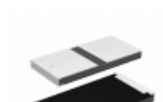
**RCP1206W51R0JEC**  
RES SMD 51 OHM 5% 11W 1206  
Vishay Dale

RFQ



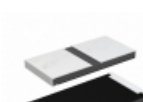
**RCP2512B1K80GEB**  
RES SMD 1.8K OHM 2% 22W 2512  
Vishay Dale

RFQ



**RCP2512W240RGS3**  
RES SMD 240 OHM 2% 22W 2512  
Vishay Dale

RFQ



**RCP2512W620RGEB**  
RES SMD 620 OHM 2% 22W 2512  
Vishay Dale

RFQ



**RCP0603W300RGS2**  
RES SMD 300 OHM 2% 3.9W 0603  
Vishay Dale

RFQ



**M55342H06B15E0RT5**  
RES SMD 15K OHM 1% 0.15W 0705  
Vishay Dale

RFQ