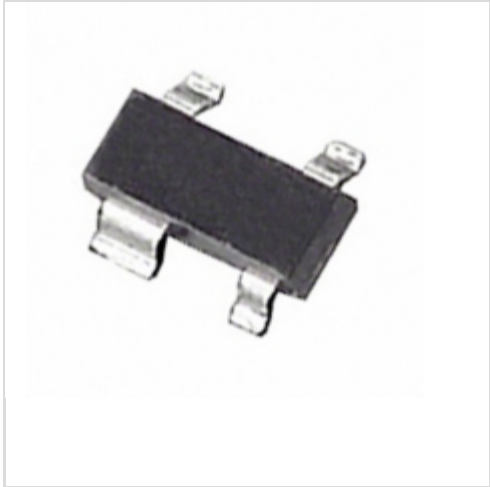


**ADM811MART-REEL7**


[ADI \(Analog Devices, Inc.\)](#)  
 IC SUPERVSR W/RESET 4.38V SOT143  
 Contains lead / RoHS non-compliant  
 Integrated Circuits (ICs)

[ADM811MART-REEL7.pdf](#)

**Buy Now**

We can supply ADI (Analog Devices, Inc.) ADM811MART-REEL7, use the request quote form to request ADM811MART-REEL7 price, ADI (Analog Devices, Inc.) Datasheet PDF and lead time. Zeano.com is a professional electronic components distributor. With 3+ Million line items of available electronic components can ship in short lead-time, over 250 thousand part numbers of electronic components in stock for immediately delivery, which may include part number ADM811MART-REEL7. The price and lead time for ADM811MART-REEL7 depending on the quantity required, availability and warehouse location.

## Shopping Process

**1**

Confirm the product

**2**

submit the order

**3**

payment

**4**

wait for delivery

**5**

receive the goods

## Specifications

<b>Voltage - Threshold:</b>	4.38V
<b>Type:</b>	Simple Reset/Power-On Reset
<b>Supplier Device Package:</b>	SOT-143-4
<b>Series:</b>	-
<b>Reset Timeout:</b>	140 ms Minimum
<b>Reset:</b>	Active Low
<b>Packaging:</b>	Tape & Reel (TR)
<b>Package / Case:</b>	TO-253-4, TO-253AA
<b>Output:</b>	Push-Pull, Totem Pole
<b>Operating Temperature:</b>	-40°C ~ 85°C (TA)
<b>Number of Voltages Monitored:</b>	1
<b>Mounting Type:</b>	Surface Mount

## Related products


**ADM811LTART**

in stock  
[AD](#)

RFQ


**ADM811MARTZ-REEL-7**

in stock  
[AD](#)

RFQ


**ADM811LARTZ-RL7**

[AD](#)

RFQ


**ADM811MARTZ**

in stock  
[AD](#)

RFQ


**ADM811MART-RL7**

in stock  
[AD](#)

RFQ


**ADM811MARTZ-REEL7**

IC SUPERVISOR RESET 4.38V SOT143  
[Analog Devices Inc.](#)

RFQ


**ADM811MART-REEL-7**

in stock  
[ADI](#)

RFQ


**ADM811MARTZ-REEL**

IC SUPERVISOR RESET 4.38V SOT143  
[Analog Devices Inc.](#)

RFQ


**ADM811MART**

[AD](#)

RFQ


**ADM811MART-REEL**

in stock  
[ADI](#)

RFQ

## Guess You May Looking For


**9T04021A3092CBHF3**

RES SMD 30.9K OHM 1/16W 0402  
[Yageo](#)

RFQ


**9T04021A62R0BBHF3**

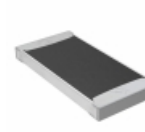
RES SMD 62 OHM 0.1% 1/16W 0402  
[Yageo](#)

RFQ


**RG3216P-5100-W-T1**

RES SMD 510 OHM 0.05% 1/4W 1206  
[Susumu](#)

RFQ


**TNPW2512402RFEEG**

RES SMD 402 OHM 1% 1/2W 2512  
[Vishay Dale](#)

RFQ


**RAVF104DJT2R70**

RES ARRAY 4 RES 2.7 OHM 0804  
[Stackpole Electronics Inc.](#)

RFQ


**YC248-FR-0729K4L**

RES ARRAY 8 RES 29.4K OHM 1606  
[Yageo](#)

RFQ


**4420P-2-102**

RES ARRAY 19 RES 1K OHM 20SOIC  
[Boums Inc.](#)

RFQ


**CMF201K0000GKEA**

RES 1K OHM 1W 2% AXIAL  
[Vishay Dale](#)

RFQ


**CMF5546K400DHRE**

RES 46.4K OHM 1/2W .5% AXIAL  
[Vishay Dale](#)

RFQ


**PPN100JT-52-2R2**

RES 2.2 OHM 1W 5% AXIAL  
[Yageo](#)

RFQ