

AP3008AKTR-G1



Diodes Incorporated
IC LED BACKLIGHT SOT23-5
Lead free / RoHS Compliant
Integrated Circuits (ICs)

Buy Now

We can supply AP3008AKTR-G1, use the request quote form to request AP3008AKTR-G1 price and lead time. Zeano is a professional electronic components distributor. With 3+ Million line items of available electronic components can ship in short lead-time, over 250 thousand part numbers of electronic components in stock for immediately delivery, which may include part number AP3008AKTR-G1. The price and lead time for AP3008AKTR-G1 depending on the quantity required and warehouse location. Contact us and our sales representative will provide you price. We look forward to work with you.

Shopping Process

1

Confirm the product

2

submit the order

3

payment

4

wait for delivery

5

receive the goods

Specifications

Series: *

Related products



AP3003T-5.0E1
BCD

RFQ



AP3005MTR-G1
IC REG BUCK ADJ 2A 8SOIC
Diodes Incorporated

RFQ



AP3003T-ADJ
BCD

RFQ



AP3008KTR
BCD

RFQ



AP3008KTA-E1
BCD

RFQ



AP3008KTP-E1
BCD

RFQ



AP3003T-ADJE1
BCD

RFQ



AP3008KTR-E1
IC LED BACKLIGHT SOT23-5
Diodes Incorporated

RFQ



AP3008UKTR-G1
IC LED BACKLIGHT SOT23-5
Diodes Incorporated

RFQ



AP3008AKTR-E1
BCD

RFQ

Guess You May Looking For



RT0805WRC07102KL
RES SMD 102K OHM 0.05% 1/8W 0805
Yageo

RFQ



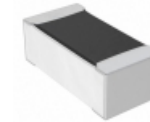
RG1005N-9760-B-T5
RES SMD 976 OHM 0.1% 1/16W 0402
Susumu

RFQ



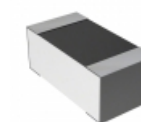
RG2012N-121-W-T5
RES SMD 120 OHM 0.05% 1/8W 0805
Susumu

RFQ



RN73C1E2K55BTDF
RES SMD 2.55KOHM 0.1% 1/16W 0402
TE Connectivity Passive Product

RFQ



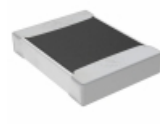
RN73C1J52R3BTDF
RES SMD 52.3 OHM 0.1% 1/16W 0603
TE Connectivity Passive Product

RFQ



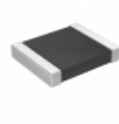
WSLP0603R0390FEB
RES SMD 0.039 OHM 1% 0.4W 0603
Vishay Dale

RFQ



TNPW12101K20BETA
RES SMD 1.2K OHM 0.1% 1/3W 1210
Vishay Dale

RFQ



RT1210CRB078K2L
RES SMD 8.2K OHM 0.25% 1/4W 1210
Yageo

RFQ



RG2012V-4991-D-T5
RES SMD 4.99K OHM 0.5% 1/8W 0805
Susumu

RFQ



PTN1206E2373BST1
RES SMD 237K OHM 0.1% 0.4W 1206
Vishay Thin Film

RFQ