

IRS2128PBF

International Rectifier (Infineon Technologies)

IC DRIVER CURR SENSE 1CH 8-DIP
Lead free / RoHS Compliant
Integrated Circuits (ICs)

[IRS2128PBF.pdf](#)

Buy Now

Images are for reference only.

See Product Specifications for product details.

If you are interested to buy IRS2128PBF, Just Email us.

Sales@zeanoit.com

our sales team will reply you within 24 hours

Shopping Process

1

Confirm the product

2

submit the order

3

payment

4

wait for delivery

5

receive the goods

Specifications

Voltage - Supply:	12 V ~ 20 V
Supplier Device Package:	8-DIP
Series:	-
Rise / Fall Time (Typ):	80ns, 40ns
Packaging:	Tube
Package / Case:	8-DIP (0.300", 7.62mm)
Operating Temperature:	-40°C ~ 150°C (TJ)
Number of Drivers:	1
Mounting Type:	Through Hole
Logic Voltage - VIL, VIH:	0.8V, 2.5V
Input Type:	Inverting
High Side Voltage - Max (Bootstrap):	600V
Gate Type:	IGBT, N-Channel MOSFET
Driven Configuration:	High-Side
Current - Peak Output (Source, Sink):	290mA, 600mA
Channel Type:	Single

Related products


IRS2130
[IR](#)

RFQ



IRS21281SPBF
IC DVR CURR SENSE 1CH 600V 8SOIC
[Infineon Technologies](#)

RFQ



IRS21281STRPBF
IC DVR CURRENT SENSE 1CH 8-SOIC
[Infineon Technologies](#)

RFQ



IRS2130D
[IR](#)

RFQ



IRS2128PBF.
[IR](#)

RFQ



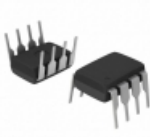
IRS2128SPBF
IC DVR CURRENT SENSE 1CH 8SOIC
[Infineon Technologies](#)

RFQ



IRS2128STRPBF
IC DVR CURRENT SENSE 1CH 8-SOIC
[Infineon Technologies](#)

RFQ



IRS21281PBF
IC DRIVER CURR SENSE 1CH 8-DIP
[Infineon Technologies](#)

RFQ



IRS2127TRPBF
[IOR](#)

RFQ



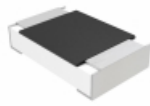
IRS2128
[IR](#)

RFQ

Guess You May Looking For


CSNL2010JT4L00
RES SMD 0.004 OHM 5% 1.5W 2010
[Stackpole Electronics Inc.](#)

RFQ



MCU08050D1331BP100
RES SMD 1.33K OHM 0.1% 1/8W 0805
[Vishay Beyschlag](#)

RFQ



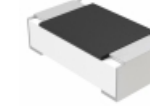
RG1608N-2152-B-T5
RES SMD 21.5KOHM 0.1% 1/10W 0603
[Susumu](#)

RFQ



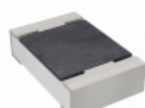
RG2012P-621-W-T5
RES SMD 620 OHM 0.05% 1/8W 0805
[Susumu](#)

RFQ



MCT06030D6652BP100
RES SMD 66.5KOHM 0.1% 1/10W 0603
[Vishay Beyschlag](#)

RFQ



RT0805WRE0743KL
RES SMD 43K OHM 0.05% 1/8W 0805
[Yageo](#)

RFQ



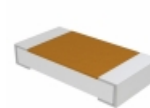
RT0805WRE07619RL
RES SMD 619 OHM 0.05% 1/8W 0805
[Yageo](#)

RFQ



RCL122522K6FKEG
RES SMD 22.6K OHM 2W 2512 WIDE
[Vishay Dale](#)

RFQ



TNPW1206287RBETA
RES SMD 287 OHM 0.1% 1/4W 1206
[Vishay Dale](#)

RFQ



PT2512FK-7W0R91L
RES SMD 0.91 OHM 1% 2W 2512
[Yageo](#)

RFQ