

**LYT5228D**



**Power Integrations**

IC LED DRIVER 25W SO-16B  
Lead free / RoHS Compliant  
Integrated Circuits (ICs)

- 1.LYT5228D.pdf
- 2.LYT5228D.pdf

**Buy Now**

**Out Stock**

**0 pcs**

Minimum:1

Multiples:100

Manufacturer lead time 10 weeks

We can supply Power Integrations LYT5228D, use the request quote form to request LYT5228D price, Power Integrations Datasheet PDF and lead time. Zeanoit.com is a professional electronic components distributor. With 3+ Million line items of available electronic components can ship in short lead-time, over 250 thousand part numbers of electronic components in stock for immediately delivery, which may include part number LYT5228D. The price and lead time for LYT5228D depending on the quantity required, availability and warehouse location.

**Shopping Process**



**Confirm the product**



**submit the order**



**payment**



**wait for delivery**



**receive the goods**

**Specifications**

<b>Voltage - Supply (Min):</b>	90VAC
<b>Voltage - Supply (Max):</b>	308VAC
<b>Voltage - Output:</b>	-
<b>Type:</b>	AC DC Offline Switcher
<b>Topology:</b>	Flyback, Step-Down (Buck), Step-Up (Boost)
<b>Supplier Device Package:</b>	16-SO B
<b>Series:</b>	LYTSwitch™-5
<b>Packaging:</b>	Tube
<b>Package / Case:</b>	16-SOIC (0.154", 3.90mm Width) 14 Leads
<b>Operating Temperature:</b>	-40°C ~ 150°C (TJ)
<b>Number of Outputs:</b>	1
<b>Mounting Type:</b>	Surface Mount
<b>Internal Switch(s):</b>	Yes
<b>Frequency:</b>	40kHz ~ 124kHz
<b>Dimming:</b>	-
<b>Current - Output / Channel:</b>	-
<b>Applications:</b>	Lighting

**Related products**



**LYT67K-K2L2-34-0-2-R33-Z**  
OSRAM

**RFQ**



**LYT5225D**  
IC LED DRIVER 9W SO-16B  
Power Integrations

**RFQ**



**LYT670-J1K1**  
in stock  
OTSINC

**RFQ**



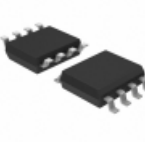
**LYT5228D-TL**  
NON-DIMMABLE SINGLE-STAGE LED DR  
Power Integrations

**RFQ**



**LYT7503D-TL**  
IC LED DRVR OFFL TRIAC 8SO  
Power Integrations

**RFQ**



**LYT7503D**  
IC LED DRVR OFFL TRIAC 8SO  
Power Integrations

**RFQ**



**LYT5225D-TL**  
NON-DIMMABLE SINGLE-STAGE LED DR  
Power Integrations

**RFQ**



**LYT5226D**  
IC LED DRIVER 16W SO-16B  
Power Integrations

**RFQ**



**LYT5226D-TL**  
NON-DIMMABLE SINGLE-STAGE LED DR  
Power Integrations

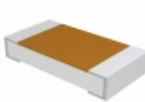
**RFQ**



**LYT5218D-TL**  
NON-DIMMABLE SINGLE-STAGE LED DR  
Power Integrations

**RFQ**

**Guess You May Looking For**



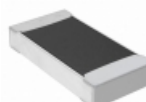
**TNPW120623R7BEEA**  
RES SMD 23.7 OHM 0.1% 1/4W 1206  
Vishay Dale

**RFQ**



**RG2012N-4220-W-T5**  
RES SMD 422 OHM 0.05% 1/8W 0805  
Susumu

**RFQ**



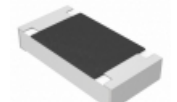
**RNCF1206DTY100R**  
RES SMD 100 OHM 0.5% 1/4W 1206  
Stackpole Electronics Inc.

**RFQ**



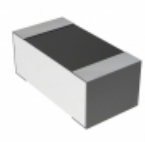
**RT2512BKE07887KL**  
RES SMD 887K OHM 0.1% 3/4W 2512  
Yageo

**RFQ**



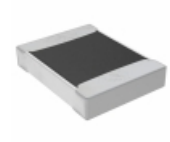
**PE1206FRF470R025L**  
RES SMD 0.025 OHM 1% 1W 1206  
Yageo

**RFQ**



**RN73C1J187RBTDF**  
RES SMD 187 OHM 0.1% 1/16W 0603  
TE Connectivity Passive Product

**RFQ**



**TNPW121088R7BETA**  
RES SMD 88.7 OHM 0.1% 1/3W 1210  
Vishay Dale

**RFQ**



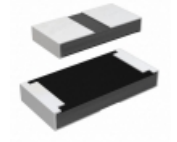
**RT1206WRD0716K9L**  
RES SMD 16.9KOHM 0.05% 1/4W 1206  
Yageo

**RFQ**



**RT0805WRB0768K1L**  
RES SMD 68.1KOHM 0.05% 1/8W 0805  
Yageo

**RFQ**



**RCP1206W10R0GTP**  
RES SMD 10 OHM 2% 11W 1206  
Vishay Dale

**RFQ**

