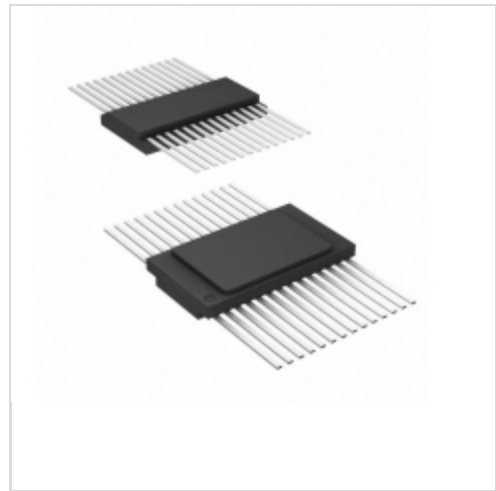


AT28HC256F-12FM/883



Microchip Technology

IC EEPROM 256KBIT 120NS 28FLATPK
 Contains lead / RoHS non-compliant
 Integrated Circuits (ICs)

[AT28HC256F-12FM/883.pdf](#)

Buy Now

We can supply Microchip Technology AT28HC256F-12FM/883, use the request quote form to request AT28HC256F-12FM/883 pirce, Microchip Technology Datasheet PDF and lead time.Zeanoit.com is a professional electronic components distributor. With 3+ Million line items of available electronic components can ship in short lead-time, over 250 thousand part numbers of electronic components in stock for immediately delivery, which may include part number AT28HC256F-12FM/883.The price and lead time for AT28HC256F-12FM/883 depending on the quantity required, availability and warehouse location.

Out Stock

0 pcs

Minimum:1

Multiples:100

Manufacturer lead time 10 weeks

Shopping Process

1

Confirm the product

2

submit the order

3

payment

4

wait for delivery

5

receive the goods

Specifications

Voltage - Supply:	4.5 V ~ 5.5 V
Supplier Device Package:	28-Flatpack, Ceramic Bottom-Brazed
Speed:	120ns
Series:	-
Packaging:	Tube
Package / Case:	28-CFlatPack
Operating Temperature:	-55°C ~ 125°C (TC)
Memory Type:	Non-Volatile
Memory Size:	256Kb (32K x 8)
Memory Format:	EEPROM
Interface:	Parallel

Related products



AT28HC256F-12JA
 IC EEPROM 256KBIT 120NS 32PLCC
[Microchip Technology](#)

RFQ



AT28HC256E12SC
 in stock
[ATMEL](#)

RFQ

AT28HC256F-12FM/883
 in stock
[ATMEL](#)

RFQ



AT28HC256F-12JI
 IC EEPROM 256KBIT 120NS 32PLCC
[Microchip Technology](#)

RFQ

AT28HC256E-90UM/883
 in stock
[ATMEL](#)

RFQ



AT28HC256F-12LM/883
 in stock
[ATMEL](#)

RFQ

AT28HC256F-12DM/883
 in stock
[ATMEL](#)

RFQ



AT28HC256F
 in stock
[ATMEL](#)

RFQ



AT28HC256F-12LM/883
 IC EEPROM 256KBIT 120NS 32CLCC
[Microchip Technology](#)

RFQ



AT28HC256F-12JC
 IC EEPROM 256KBIT 120NS 32PLCC
[Microchip Technology](#)

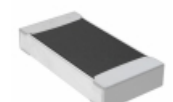
RFQ

Guess You May Looking For



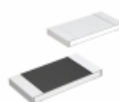
ERA-3AEB153V
 RES SMD 15K OHM 0.1% 1/10W 0603
[Panasonic Electronic Components](#)

RFQ



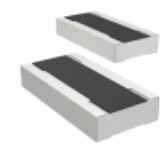
UCR18EVHFSR036
 RES SMD 0.036 OHM 1% 1/2W 1206
[Rohm Semiconductor](#)

RFQ



MCR18ERTJ432
 RES SMD 4.3K OHM 5% 1/4W 1206
[Rohm Semiconductor](#)

RFQ



RCL0612243RFKEA
 RES SMD 243 OHM 1/2W 1206 WIDE
[Vishay Dale](#)

RFQ



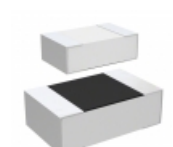
ERA-1ARB1780C
 RES SMD 178 OHM 0.1% 1/20W 0201
[Panasonic Electronic Components](#)

RFQ



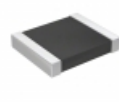
RC0201FR-075M1L
 RES SMD 5.1M OHM 1% 1/20W 0201
[Yageo](#)

RFQ



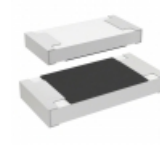
CRG0805J330R
 RES SMD 330 OHM 5% 1/8W 0805
[TE Connectivity Passive Product](#)

RFQ



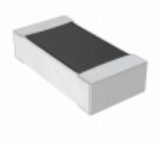
RC1210FR-07120KL
 RES SMD 120K OHM 1% 1/2W 1210
[Yageo](#)

RFQ



CRL0603-FW-3R90ELF
 RES SMD 3.9 OHM 1% 1/10W 0603
[Bourns Inc.](#)

RFQ



RNCF0603DTE3K32
 RES SMD 3.32KOHM 0.5% 1/10W 0603
[Stackpole Electronics Inc.](#)

RFQ