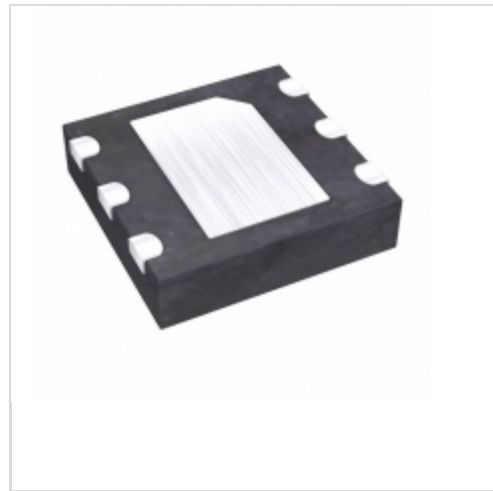


**MAX5900NETT+T**



**Maxim Integrated**

IC HOT-SWAP CONTROLLER 6TDFN

Lead free / RoHS Compliant

Integrated Circuits (ICs)

[1.MAX5900NETT+T.pdf](#)

[2.MAX5900NETT+T.pdf](#)

**Buy Now**

Images are for reference only.

See Product Specifications for product details.

If you are interested to buy MAX5900NETT+T,Just Email us.

Sales@zeanoit.com

our sales team will reply you within 24 hours

Shopping Process

**1**

Confirm the product

**2**

submit the order

**3**

payment

**4**

wait for delivery

**5**

receive the goods

Specifications

|                                 |                              |
|---------------------------------|------------------------------|
| <b>Voltage - Supply:</b>        | -100 V ~ -9 V                |
| <b>Type:</b>                    | Hot Swap Controller          |
| <b>Supplier Device Package:</b> | 6-TDFN Exposed Pad (3x3)     |
| <b>Series:</b>                  | Simple Swapper™              |
| <b>Programmable Features:</b>   | UVLO                         |
| <b>Packaging:</b>               | Tape & Reel (TR)             |
| <b>Package / Case:</b>          | 6-WDFN Exposed Pad           |
| <b>Operating Temperature:</b>   | -40°C ~ 85°C                 |
| <b>Number of Channels:</b>      | 1                            |
| <b>Mounting Type:</b>           | Surface Mount                |
| <b>Internal Switch(s):</b>      | No                           |
| <b>Features:</b>                | Fault Timeout, Thermal Limit |
| <b>Feature Pins:</b>            | DRAIN, (ON, /OFF), /PGOOD    |
| <b>Current - Supply:</b>        | 500µA                        |
| <b>Current - Output (Max):</b>  | -                            |
| <b>Applications:</b>            | -48V                         |

Related products



**MAX5900NNEUT+T**  
IC HOT-SWAP CONTROLLER SOT23-6  
[Maxim Integrated](#)

RFQ



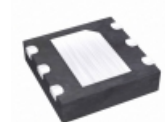
**MAX5900LCEUT+T**  
IC HOT-SWAP CONTROLLER SOT23-6  
[Maxim Integrated](#)

RFQ



**MAX5900NNEUT-T**  
[MAX](#)

RFQ



**MAX5900LCETT+T**  
IC HOT-SWAP CONTROLLER 6TDFN  
[Maxim Integrated](#)

RFQ



**MAX5901AAETT+**  
in stock  
[MAXIM](#)

RFQ



**MAX5900LCEUT**  
[MAXIM](#)

RFQ



**MAX5900NNEUT**  
in stock  
[MAXIM](#)

RFQ



**MAX5900LBEUT-T**  
[MAXIM](#)

RFQ



**MAX5900LBEUT+T**  
IC HOT-SWAP CONTROLLER SOT23-6  
[Maxim Integrated](#)

RFQ



**MAX5901**  
in stock  
[MAXIM](#)

RFQ

Guess You May Looking For



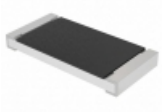
**CRCW2512158RFKEGHP**  
RES SMD 158 OHM 1% 1.5W 2512  
[Vishay Dale](#)

RFQ



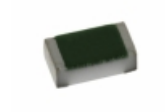
**CRCW25121K58FKEGHP**  
RES SMD 1.58K OHM 1% 1.5W 2512  
[Vishay Dale](#)

RFQ



**CRCW251214K7FKEGHP**  
RES SMD 14.7K OHM 1% 1.5W 2512  
[Vishay Dale](#)

RFQ



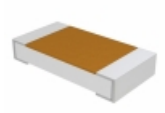
**TNPW04022K20BETD**  
RES SMD 2.2K OHM 0.1% 1/16W 0402  
[Vishay Dale](#)

RFQ



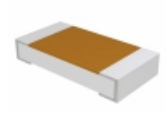
**RT1206BRC07215KL**  
RES SMD 215K OHM 0.1% 1/4W 1206  
[Yageo](#)

RFQ



**RCWE120612L0JTEA**  
RES SMD 0.012 OHM 5% 1/2W 1206  
[Vishay Dale](#)

RFQ



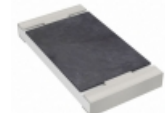
**RCWE120624L3FMEA**  
RES SMD 0.0243 OHM 1% 1/2W 1206  
[Vishay Dale](#)

RFQ



**ERA-2HRB8251X**  
RES SMD 8.25KOHM 0.1% 1/16W 0402  
[Panasonic Electronic Components](#)

RFQ



**RT2010DKE0734KL**  
RES SMD 34K OHM 0.5% 1/2W 2010  
[Yageo](#)

RFQ



**RT0603WRC072K43L**  
RES SMD 2.43K OHM 1/10W 0603  
[Yageo](#)

RFQ