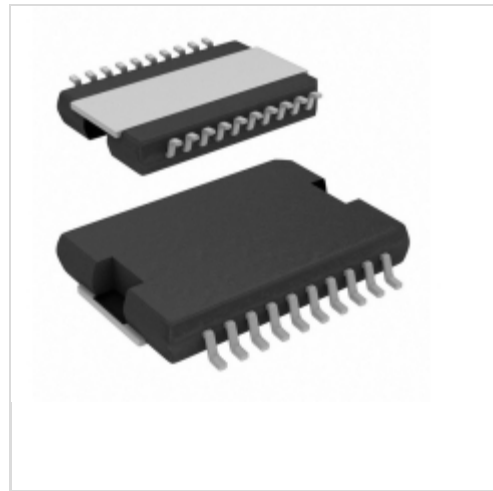


MC33886VW



[NXP Semiconductors / Freescale](#)

IC MOTOR DRIVER PAR 20HSOP
Lead free / RoHS Compliant
Integrated Circuits (ICs)

[MC33886VW.pdf](#)

[Buy Now](#)

Images are for reference only.

See Product Specifications for product details.

If you are interested to buy MC33886VW,Just Email us.

Sales@zeanoit.com

our sales team will reply you within 24 hours

Shopping Process

1

Confirm the product

2

submit the order

3

payment

4

wait for delivery

5

receive the goods

Specifications

Voltage - Supply:	5 V ~ 40 V
Voltage - Load:	5 V ~ 40 V
Technology:	CMOS
Supplier Device Package:	20-HSOP
Step Resolution:	-
Series:	-
Packaging:	Tube
Package / Case:	20-SOIC (0.433", 11.00mm Width) Exposed Pad
Output Configuration:	Half Bridge (2)
Operating Temperature:	-40°C ~ 150°C (TJ)
Mounting Type:	Surface Mount
Motor Type - Stepper:	-
Motor Type - AC, DC:	Brushed DC
Interface:	Parallel
Function:	Driver - Fully Integrated, Control and Power Stage
Current - Output:	5A
Applications:	General Purpose

Related products



MC33886PVWR2
IC MOTOR DRIVER PAR 20HSOP
[NXP USA Inc.](#)

[RFQ](#)



MC33886DH
IC MOTOR DRIVER PAR 20HSOP
[NXP USA Inc.](#)

[RFQ](#)



MC33887APVW
IC MOTOR DRIVER PAR 20HSOP
[NXP USA Inc.](#)

[RFQ](#)



MC33886DHR2
IC MOTOR DRIVER PAR 20HSOP
[NXP USA Inc.](#)

[RFQ](#)



MC33887AVW
IC MOTOR DRIVER PAR 20HSOP
[NXP USA Inc.](#)

[RFQ](#)



MC33886PVW2
[FREESCALE](#)

[RFQ](#)



MC33886VWR2
IC MOTOR DRIVER PAR 20HSOP
[NXP USA Inc.](#)

[RFQ](#)



MC33887APVWR2
IC MOTOR DRIVER PAR 20HSOP
[NXP USA Inc.](#)

[RFQ](#)



MC33887AVWR2
IC MOTOR DRIVER PAR 20HSOP
[NXP USA Inc.](#)

[RFQ](#)



MC33886PVW
IC MOTOR DRIVER PAR 20HSOP
[NXP USA Inc.](#)

[RFQ](#)

Guess You May Looking For



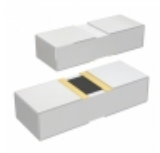
PHP00805H7501BBT1
RES SMD 7.5K OHM 0.1% 5/8W 0805
[Vishay Thin Film](#)

[RFQ](#)



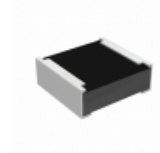
PHP00603E2262BBT1
RES SMD 22.6K OHM 0.1% 3/8W 0603
[Vishay Thin Film](#)

[RFQ](#)



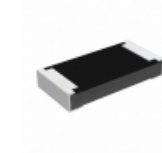
PHP00603E2842BST1
RES SMD 28.4K OHM 0.1% 3/8W 0603
[Vishay Thin Film](#)

[RFQ](#)



RCP0505B33R0JEA
RES SMD 33 OHM 5% 5W 0505
[Vishay Dale](#)

[RFQ](#)



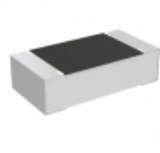
RCP1206B560RJEJ
RES SMD 560 OHM 5% 11W 1206
[Vishay Dale](#)

[RFQ](#)



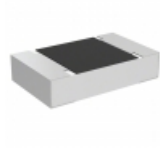
RCP0603W33R0JEB
RES SMD 33 OHM 5% 3.9W 0603
[Vishay Dale](#)

[RFQ](#)



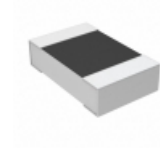
TNPU0603158RBZEN00
RES SMD 158 OHM 0.1% 1/10W 0603
[Vishay Dale](#)

[RFQ](#)



TNPU0805464RBZEN00
RES SMD 464 OHM 0.1% 1/8W 0805
[Vishay Dale](#)

[RFQ](#)



RN73C2A59RBTG
RES SMD 59 OHM 0.1% 1/10W 0805
[TE Connectivity Passive Product](#)

[RFQ](#)



RG1608V-4640-P-T1
RES SMD 464 OHM 0.02% 1/10W 0603
[Susumu](#)

[RFQ](#)