

AT28C64X-15SI



Microchip Technology

IC EEPROM 64KBIT 150NS 28SOIC
Contains lead / RoHS non-compliant
Integrated Circuits (ICs)

[AT28C64X-15SI.pdf](#)

Buy Now

Images are for reference only.

See Product Specifications for product details.

If you are interested to buy AT28C64X-15SI, Just Email us.

Sales@zeanoit.com

our sales team will reply you within 24 hours

Shopping Process

1

Confirm the product

2

submit the order

3

payment

4

wait for delivery

5

receive the goods

Specifications

Voltage - Supply:	4.5 V ~ 5.5 V
Supplier Device Package:	28-SOIC
Speed:	150ns
Series:	-
Packaging:	Tube
Package / Case:	28-SOIC (0.295", 7.50mm Width)
Operating Temperature:	-40°C ~ 85°C (TC)
Memory Type:	Non-Volatile
Memory Size:	64Kb (8K x 8)
Memory Format:	EEPROM
Interface:	Parallel

Related products



AT28C64X-15TI

in stock
[ATMEL](#)

RFQ



AT28C64X-20JC

IC EEPROM 64KBIT 200NS 32PLCC
[Microchip Technology](#)

RFQ



AT28C64X-15PI

IC EEPROM 64KBIT 150NS 28DIP
[Microchip Technology](#)

RFQ



AT28C64X-20PC

IC EEPROM 64KBIT 200NS 28DIP
[Microchip Technology](#)

RFQ



AT28C64X-15PC

in stock
[ATMEL](#)

RFQ



AT28C64X-15SC

IC EEPROM 64KBIT 150NS 28SOIC
[Microchip Technology](#)

RFQ



AT28C64X-20JI

IC EEPROM 64KBIT 200NS 32PLCC
[Microchip Technology](#)

RFQ



AT28C64X-15PC

IC EEPROM 64KBIT 150NS 28DIP
[Microchip Technology](#)

RFQ



AT28C64X-15TC

in stock
[ATMEL](#)

RFQ



AT28C64X-15JI

IC EEPROM 64KBIT 150NS 32PLCC
[Microchip Technology](#)

RFQ

Guess You May Looking For



SMW256RJT

RES SMD 56 OHM 5% 2W 2616
[TE Connectivity Passive Product](#)

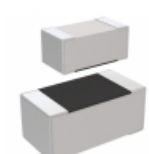
RFQ



RC0805DR-07536KL

RES SMD 536K OHM 0.5% 1/8W 0805
[Yageo](#)

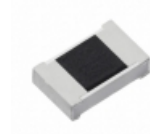
RFQ



RC0201DR-0788R7L

RES SMD 88.7 OHM 0.5% 1/20W 0201
[Yageo](#)

RFQ



ERJ-PB3B1912V

RES SMD 19.1K OHM 0.1% 1/5W 0603
[Panasonic Electronic Components](#)

RFQ



CRGH0603F20K5

RES SMD 20.5K OHM 1% 1/5W 0603
[TE Connectivity Passive Product](#)

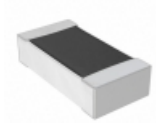
RFQ



AT0805DRD07110KL

RES SMD 110K OHM 0.5% 1/8W 0805
[Yageo](#)

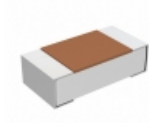
RFQ



RNCF0603DTC69R8

RES SMD 69.8 OHM 0.5% 1/10W 0603
[Stackpole Electronics Inc.](#)

RFQ



TRR03EZPJ685

RES SMD 6.8M OHM 5% 1/10W 0603
[Rohm Semiconductor](#)

RFQ



RT0402CRD071K1L

RES SMD 1.1KOHM 0.25% 1/16W 0402
[Yageo](#)

RFQ



ERA-2HKD16R0X

RES SMD 16 OHM 0.5% 1/16W 0402
[Panasonic Electronic Components](#)

RFQ