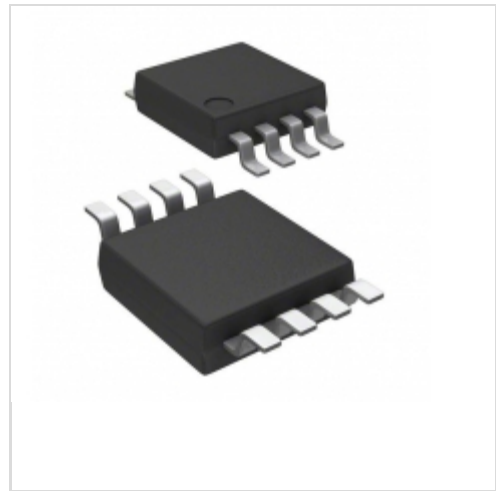


**MAX708TEUA+**



**Maxim Integrated**

IC SUPERVISOR MPU UMAX  
Lead free / RoHS Compliant  
Integrated Circuits (ICs)

- 1.MAX708TEUA+.pdf
- 2.MAX708TEUA+.pdf

**Buy Now**

**Out Stock**

**0 pcs**

Minimum:1

Multiples:100

Manufacturer lead time 10 weeks

part#MAX708TEUA+ is available, see description of MAX708TEUA+ as below .  
use the request quote form to request MAX708TEUA+ price and lead time.  
Buy Electronic Components at zeanoit.com .we are an independent distributor of electronic components with extensive inventory in stock.  
The price and lead time for MAX708TEUA+ depending on the quantity required, availability and warehouse location.Contact us today and our sales team will send you quotation soon.  
Email: sales@zeanoit.com

Shopping Process

**1**

**Confirm the product**

**2**

**submit the order**

**3**

**payment**

**4**

**wait for delivery**

**5**

**receive the goods**

Specifications

<b>Voltage - Threshold:</b>	3.08V
<b>Type:</b>	Simple Reset/Power-On Reset
<b>Supplier Device Package:</b>	8-uMAX
<b>Series:</b>	-
<b>Reset Timeout:</b>	140 ms Minimum
<b>Reset:</b>	Active High/Active Low
<b>Packaging:</b>	Tube
<b>Package / Case:</b>	8-TSSOP, 8-MSOP (0.118", 3.00mm Width)
<b>Output:</b>	Push-Pull, Push-Pull
<b>Operating Temperature:</b>	-40°C ~ 85°C (TA)
<b>Number of Voltages Monitored:</b>	1
<b>Mounting Type:</b>	Surface Mount

Related products



**MAX708TEUA**

in stock  
[MAXIM](#)

RFQ



**MAX708TESA+**

IC SUPERVISOR MPU 8-SOIC  
[Maxim Integrated](#)

RFQ



**MAX709CSA**

in stock  
[MAXIM](#)

RFQ



**MAX708TESA-TG**

IC MPU SUPERVISORY 3.08V 8SOIC  
[ON Semiconductor](#)

RFQ



**MAX708TMJA**

in stock  
[MAXIM](#)

RFQ



**MAX708TESA-T**

IC MPU SUPERVISORY 3.08V 8SOIC  
[ON Semiconductor](#)

RFQ



**MAX708TEUA+T**

IC SUPERVISOR MPU UMAX  
[Maxim Integrated](#)

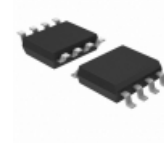
RFQ



**MAX7095SEPA**

in stock  
[MAXIM](#)

RFQ



**MAX708TESA+T**

IC SUPERVISOR MPU 8-SOIC  
[Maxim Integrated](#)

RFQ



**MAX709**

in stock  
[MAXIM](#)

RFQ

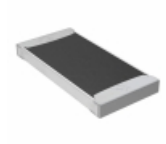
Guess You May Looking For



**RG2012P-1690-B-T1**

RES SMD 169 OHM 0.1% 1/8W 0805  
[Susumu](#)

RFQ



**TNPW251210K5BEEG**

RES SMD 10.5K OHM 0.1% 1/2W 2512  
[Vishay Dale](#)

RFQ



**743C043103JP**

RES ARRAY 2 RES 10K OHM 1008  
[CTS Resistor Products](#)

RFQ



**770101561**

RES ARRAY 9 RES 560 OHM 10SIP  
[CTS Resistor Products](#)

RFQ



**CMF55309R00FHBE**

RES 309 OHM 1/2W 1% AXIAL  
[Vishay Dale](#)

RFQ



**CMF501K2700FHBE**

RES 1.27K OHM 1/4W 1% AXIAL  
[Vishay Dale](#)

RFQ



**MK2212FE-R52**

RES 22.1K OHM 1/4W 1% AXIAL  
[Ohmite](#)

RFQ



**PCF14JT3K90**

RES 3.9K OHM 1/4W 5% AXIAL  
[Stackpole Electronics Inc.](#)

RFQ



**RC14JB1M60**

RES 1.6M OHM 1/4W 5% AXIAL  
[Stackpole Electronics Inc.](#)

RFQ



**RNF14BAE523R**

RES 523 OHM 1/4W .1% AXIAL  
[Stackpole Electronics Inc.](#)

RFQ