

MAX6865UK44D5L+T



[Maxim Integrated](#)

IC MPU SUPERVISOR SOT23-5

Lead free / RoHS Compliant

Integrated Circuits (ICs)

[1.MAX6865UK44D5L+T.pdf](#)

[2.MAX6865UK44D5L+T.pdf](#)

[Buy Now](#)

We can supply Maxim Integrated MAX6865UK44D5L+T, use the request quote form to request MAX6865UK44D5L+T price, Maxim Integrated Datasheet PDF and lead time. Zeanoit.com is a professional electronic components distributor. With 3+ Million line items of available electronic components can ship in short lead-time, over 250 thousand part numbers of electronic components in stock for immediately delivery, which may include part number MAX6865UK44D5L+T. The price and lead time for MAX6865UK44D5L+T depending on the quantity required, availability and warehouse location.

Shopping Process

1

Confirm the product

2

submit the order

3

payment

4

wait for delivery

5

receive the goods

Specifications

Voltage - Threshold:	4.375V
Type:	Simple Reset/Power-On Reset
Supplier Device Package:	SOT-23-5
Series:	-
Reset Timeout:	300 ms Minimum
Reset:	Active High
Packaging:	Tape & Reel (TR)
Package / Case:	SC-74A, SOT-753
Output:	Push-Pull, Totem Pole
Operating Temperature:	-40°C ~ 85°C (TA)
Number of Voltages Monitored:	1
Mounting Type:	Surface Mount

Related products



MAX6865UK44D6L+T
IC MPU SUPERVISOR SOT23-5
[Maxim Integrated](#)

RFQ



MAX6865UK44D2S+T
IC MPU SUPERVISOR SOT23-5
[Maxim Integrated](#)

RFQ



MAX6865UK44D6S+T
IC MPU SUPERVISOR SOT23-5
[Maxim Integrated](#)

RFQ



MAX6865UK44D3L+T
IC MPU SUPERVISOR SOT23-5
[Maxim Integrated](#)

RFQ



MAX6865UK44D3S+T
IC MPU SUPERVISOR SOT23-5
[Maxim Integrated](#)

RFQ



MAX6865UK45D1L+T
IC MPU SUPERVISOR SOT23-5
[Maxim Integrated](#)

RFQ



MAX6865UK44D4S+T
IC MPU SUPERVISOR SOT23-5
[Maxim Integrated](#)

RFQ



MAX6865UK45D1S+T
IC MPU SUPERVISOR SOT23-5
[Maxim Integrated](#)

RFQ



MAX6865UK44D5S+T
IC MPU SUPERVISOR SOT23-5
[Maxim Integrated](#)

RFQ



MAX6865UK44D4L+T
IC MPU SUPERVISOR SOT23-5
[Maxim Integrated](#)

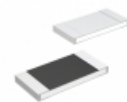
RFQ

Guess You May Looking For



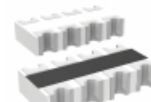
RG3216P-4641-C-T5
RES SMD 4.64KOHM 0.25% 1/4W 1206
[Susumu](#)

RFQ



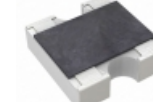
MCR18EZHFL5R62
RES SMD 5.62 OHM 1% 1/4W 1206
[Rohm Semiconductor](#)

RFQ



CAT16-471J4LF
RES ARRAY 4 RES 470 OHM 1206
[Bourns Inc.](#)

RFQ



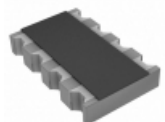
YC162-JR-0736KL
RES ARRAY 2 RES 36K OHM 0606
[Yageo](#)

RFQ



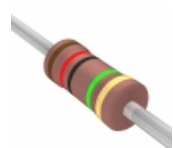
AF122-FR-07634KL
RES ARRAY 2 RES 634K OHM 0404
[Yageo](#)

RFQ



742C083513JTR
RES ARRAY 4 RES 51K OHM 1206
[CTS Resistor Products](#)

RFQ



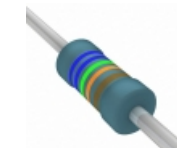
HHV-25JT-52-15M
RES 15M OHM 1/4W 5% AXIAL
[Yageo](#)

RFQ



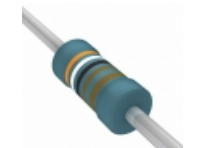
RNMF14FAD10R0
RES 10 OHM 1/4W 1% AXIAL
[Stackpole Electronics Inc.](#)

RFQ



MBB02070C6653FRP00
RES 665K OHM 0.6W 1% AXIAL
[Vishay BC Components](#)

RFQ



MRS25000C3901FCT00
RES 3.9K OHM 0.6W 1% AXIAL
[Vishay BC Components](#)

RFQ