

**IX2D11S7**



**IXYS Corporation**  
 IC DRVR HALF BRIDGE GATE 14-SOIC  
 Lead free / RoHS Compliant  
 Integrated Circuits (ICs)

**Buy Now**

Images are for reference only.  
 See Product Specifications for product details.  
 If you are interested to buy IX2D11S7, Just Email us.  
 Sales@zeanoit.com  
 our sales team will reply you within 24 hours

Shopping Process

**1**

Confirm the product

**2**

submit the order

**3**

payment

**4**

wait for delivery

**5**

receive the goods

Specifications

<b>Voltage - Supply:</b>	-
<b>Supplier Device Package:</b>	14-SOIC
<b>Series:</b>	-
<b>Rise / Fall Time (Typ):</b>	-
<b>Packaging:</b>	Bulk
<b>Package / Case:</b>	14-SOIC (0.154", 3.90mm Width)
<b>Operating Temperature:</b>	-
<b>Mounting Type:</b>	Surface Mount
<b>Logic Voltage - VIL, VIH:</b>	-
<b>Input Type:</b>	-
<b>Gate Type:</b>	-
<b>Driven Configuration:</b>	-
<b>Current - Peak Output (Source, Sink):</b>	-
<b>Channel Type:</b>	-

Related products



**IX2R11M6T/R**  
 IC DRVR HALF BRIDGE 2A 16-MLP  
[IXYS](#)

RFQ



**IX2D11P7**  
 IC DRVR HALF BRIDGE GATE 14DIP  
[IXYS](#)

RFQ



**IX2C11P1**  
 IC DRVR HALF BRIDGE GATE 8DIP  
[IXYS](#)

RFQ



**IX2C11S1**  
 IC DRVR HALF BRIDGE GATE 8-SOIC  
[IXYS](#)

RFQ



**IX2R11P7**  
 IC DRVR HALF BRIDGE 2A 14DIP  
[IXYS](#)

RFQ



**IX2B11S7T/R**  
 IC DRVR HALF BRIDGE GATE 14-SOIC  
[IXYS](#)

RFQ



**IX2C11S1T/R**  
 IC DRVR HALF BRIDGE GATE 8-SOIC  
[IXYS](#)

RFQ



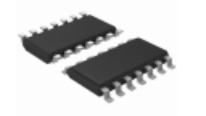
**IX2R11M6**  
 IC DRVR HALF BRIDGE 2A 16-MLP  
[IXYS](#)

RFQ



**IX2R11S3**  
 IC DRVR HALF BRIDGE 2A 16-SOIC  
[IXYS](#)

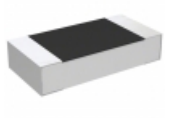
RFQ



**IX2D11S7T/R**  
 IC DRVR HALF BRIDGE GATE 14-SOIC  
[IXYS](#)

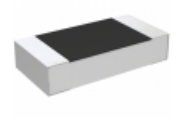
RFQ

Guess You May Looking For



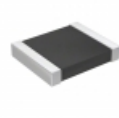
**CPF1206B23R7E1**  
 RES SMD 23.7 OHM 0.1% 1/8W 1206  
[TE Connectivity Passive Product](#)

RFQ



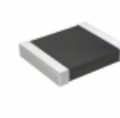
**CPF1206B102RE1**  
 RES SMD 102 OHM 0.1% 1/8W 1206  
[TE Connectivity Passive Product](#)

RFQ



**RT1210CRD07470KL**  
 RES SMD 470K OHM 0.25% 1/4W 1210  
[Yageo](#)

RFQ



**RT1210CRD0776K8L**  
 RES SMD 76.8KOHM 0.25% 1/4W 1210  
[Yageo](#)

RFQ



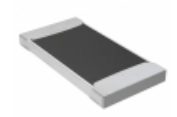
**RG1608N-71R5-B-T5**  
 RES SMD 71.5 OHM 0.1% 1/10W 0603  
[Susumu](#)

RFQ



**RCL12256K49FKEG**  
 RES SMD 6.49K OHM 2W 2512 WIDE  
[Vishay Dale](#)

RFQ



**CSNL2512FK2L00**  
 RES SMD 0.002 OHM 1% 2W 2512  
[Stackpole Electronics Inc.](#)

RFQ



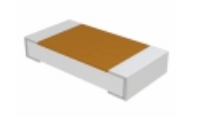
**RNCF2512BKE1K58**  
 RES SMD 1.58K OHM 0.1% 3/4W 2512  
[Stackpole Electronics Inc.](#)

RFQ



**RNCF2512BKE1M47**  
 RES SMD 1.47M OHM 0.1% 1/2W 2512  
[Stackpole Electronics Inc.](#)

RFQ



**TNPW1206198RBEEA**  
 RES SMD 198 OHM 0.1% 1/4W 1206  
[Vishay Dale](#)

RFQ