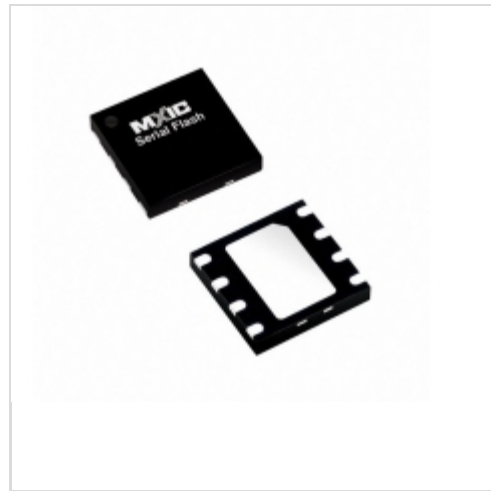


**MX25L3206EZUI-12G**



Macronix

IC FLASH 32MBIT 86MHZ 8USON  
Lead free / RoHS Compliant  
Integrated Circuits (ICs)

[MX25L3206EZUI-12G.pdf](#)

**Buy Now**

**Out Stock**

**0 pcs**

Minimum:1

Multiples:100

Manufacturer lead time 10 weeks

Images are for reference only.

See Product Specifications for product details.

If you are interested to buy MX25L3206EZUI-12G,Just Email us.

Sales@zeanoit.com

our sales team will reply you within 24 hours

Shopping Process

**1**

Confirm the product

**2**

submit the order

**3**

payment

**4**

wait for delivery

**5**

receive the goods

Specifications

<b>Voltage - Supply:</b>	2.7 V ~ 3.6 V
<b>Supplier Device Package:</b>	8-USON (4x4)
<b>Speed:</b>	86MHz
<b>Series:</b>	MX25xxx05/06
<b>Packaging:</b>	Tray
<b>Package / Case:</b>	8-UDFN Exposed Pad
<b>Operating Temperature:</b>	-40°C ~ 85°C (TA)
<b>Memory Type:</b>	Non-Volatile
<b>Memory Size:</b>	32Mb (4M x 8)
<b>Memory Format:</b>	FLASH
<b>Interface:</b>	SPI Serial

Related products



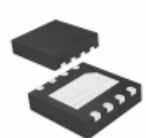
**MX25L3206EM2I-12G**  
[MXIC](#)

RFQ



**MX25L3235DM2I-10G**  
in stock  
[MXIC](#)

RFQ



**MX25L3206EZNI-12G**  
IC FLASH 32MBIT 86MHZ 8WSON  
[Macronix](#)

RFQ



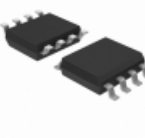
**MX25L3235EZNI-10G**  
IC FLASH 32MBIT 104MHZ 8WSON  
[Macronix](#)

RFQ



**MX25L3206EMI-12G**  
IC FLASH 32MBIT 86MHZ 16SOP  
[Macronix](#)

RFQ



**MX25L3206EM2I-12G**  
IC FLASH 32MBIT 86MHZ 8SOP  
[Macronix](#)

RFQ



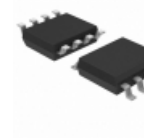
**MX25L3206EXCI-12G**  
IC FLASH 32MBIT 86MHZ 24BGA  
[Macronix](#)

RFQ



**MX25L3235DMI-12G**  
in stock  
[MXIC](#)

RFQ



**MX25L3235EM2I-10G**  
IC FLASH 32MBIT 104MHZ 8SOP  
[Macronix](#)

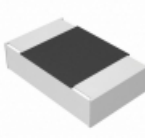
RFQ



**MX25L3235EMI-10G**  
IC FLASH 32MBIT 104MHZ 16SOP  
[Macronix](#)

RFQ

Guess You May Looking For



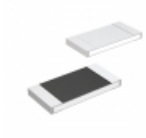
**ERA-6AEB754V**  
RES SMD 750K OHM 0.1% 1/8W 0805  
[Panasonic Electronic Components](#)

RFQ



**KTR25JZPF2202**  
RES SMD 22K OHM 1% 1/3W 1210  
[Rohm Semiconductor](#)

RFQ



**MCR03ERTF3001**  
RES SMD 3K OHM 1% 1/10W 0603  
[Rohm Semiconductor](#)

RFQ



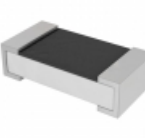
**MCR100JZHJ472**  
RES SMD 4.7K OHM 5% 1W 2512  
[Rohm Semiconductor](#)

RFQ



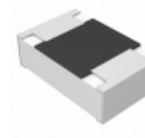
**MCR50JZHF56R2**  
RES SMD 56.2 OHM 1% 1/2W 2010  
[Rohm Semiconductor](#)

RFQ



**AC0603JR-071M5L**  
RES SMD 1.5M OHM 5% 1/10W 0603  
[Yageo](#)

RFQ



**ERJ-P6WF46R4V**  
RES SMD 46.4 OHM 1% 1/2W 0805  
[Panasonic Electronic Components](#)

RFQ



**RCS0603270KJNEA**  
RES SMD 270K OHM 5% 1/4W 0603  
[Vishay Dale](#)

RFQ



**RNCF1206DTE909K**  
RES SMD 909K OHM 0.5% 1/4W 1206  
[Stackpole Electronics Inc.](#)

RFQ



**CRCW040248K7CHEDP**  
RES SMD 48.7K OHM 1/16W 0402  
[Vishay Dale](#)

RFQ