

ICL7667CBA+T

Maxim Integrated

IC MOSFET DVR DUAL PWR 8-SOIC

Lead free / RoHS Compliant

Integrated Circuits (ICs)

[ICL7667CBA+T.pdf](#)
Buy Now

We can supply Maxim Integrated ICL7667CBA+T, use the request quote form to request ICL7667CBA+T price, Maxim Integrated Datasheet PDF and lead time. Zeanoit.com is a professional electronic components distributor. With 3+ Million line items of available electronic components can ship in short lead-time, over 250 thousand part numbers of electronic components in stock for immediately delivery, which may include part number ICL7667CBA+T. The price and lead time for ICL7667CBA+T depending on the quantity required, availability and warehouse location.

Shopping Process
1
Confirm the product
2
submit the order
3
payment
4
wait for delivery
5
receive the goods
Specifications

Voltage - Supply:	4.5 V ~ 17 V
Supplier Device Package:	8-SOIC
Series:	-
Rise / Fall Time (Typ):	20ns, 20ns
Packaging:	Tape & Reel (TR)
Package / Case:	8-SOIC (0.154", 3.90mm Width)
Operating Temperature:	0°C ~ 150°C (TJ)
Number of Drivers:	2
Mounting Type:	Surface Mount
Logic Voltage - VIL, VIH:	0.8V, 2V
Input Type:	Inverting
Gate Type:	N-Channel MOSFET
Driven Configuration:	Half-Bridge
Current - Peak Output (Source, Sink):	-
Channel Type:	Independent

Related products

ICL7667CBAZA-T
 IC MOSFET DRIVER DUAL 8-SOIC
[Intersil](#)

RFQ


ICL7667CBAZA
 IC MOSFET DRIVER DUAL PWR 8-SOIC
[Intersil](#)

RFQ


ICL7667
 in stock
[MAXIM](#)

RFQ


ICL7667CBAZ
[SOP8](#)

RFQ


ICL7667CJA
 in stock
[MAXIM](#)

RFQ


ICL7665SIPA
[INTERSIL](#)

RFQ


ICL7665SIJA
[HAS](#)

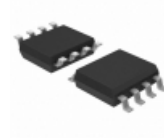
RFQ


ICL7667CBA
 IC MOSFET DRIVER DUAL PWR 8-SOIC
[Intersil](#)

RFQ


ICL7667CBA-T
 IC MOSFET DRIVER DUAL PWR 8-SOIC
[Intersil](#)

RFQ


ICL7667CBA
 IC MOSFET DVR DUAL PWR 8-SOIC
[Maxim Integrated](#)

RFQ

Guess You May Looking For

RMCP2512FT47R0
 RES SMD 47 OHM 1% 2W 2512
[Stackpole Electronics Inc.](#)

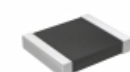
RFQ


RNCF1210BTC976K
 RES SMD 976K OHM 0.1% 1/3W 1210
[Stackpole Electronics Inc.](#)

RFQ


RNCF2512BTC1K37
 RES SMD 1.37K OHM 0.1% 3/4W 2512
[Stackpole Electronics Inc.](#)

RFQ


RT1210CRD07150KL
 RES SMD 150K OHM 0.25% 1/4W 1210
[Yageo](#)

RFQ


RNCF1210BKE2M43
 RES SMD 2.43M OHM 0.1% 1/4W 1210
[Stackpole Electronics Inc.](#)

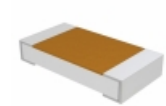
RFQ


RG2012P-1472-W-T5
 RES SMD 14.7KOHM 0.05% 1/8W 0805
[Susumu](#)

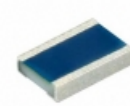
RFQ


RG2012P-2943-W-T5
 RES SMD 294K OHM 0.05% 1/8W 0805
[Susumu](#)

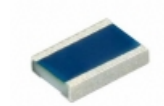
RFQ


TNPW1206147KBEEA
 RES SMD 147K OHM 0.1% 1/4W 1206
[Vishay Dale](#)

RFQ


MCW0406MD1821BP100
 RES SMD 1.82K OHM 1/4W 0604 WIDE
[Vishay Beyschlag](#)

RFQ


MCW0406MD1911BP100
 RES SMD 1.91K OHM 1/4W 0604 WIDE
[Vishay Beyschlag](#)

RFQ