

## S-1003CB26I-M5T1U



**SII Semiconductor Corporation**

IC VOLT DETECTOR

Lead free / RoHS Compliant

Integrated Circuits (ICs)

[S-1003CB26I-M5T1U.pdf](#)

**Buy Now**

**Out Stock**

**0 pcs**

Minimum:1

Multiples:100

Manufacturer lead time 10 weeks

We can supply SII Semiconductor Corporation S-1003CB26I-M5T1U, use the request quote form to request S-1003CB26I-M5T1U pirce, SII Semiconductor Corporation Datasheet PDF and lead time.Zeanoit.com is a professional electronic components distributor. With 3+ Million line items of available electronic components can ship in short lead-time, over 250 thousand part numbers of electronic components in stock for immediately delivery, which may include part number S-1003CB26I-M5T1U.The price and lead time for S-1003CB26I-M5T1U depending on the quantity required, availability and warehouse location.

### Shopping Process

**1**

Confirm the product

**2**

submit the order

**3**

payment

**4**

wait for delivery

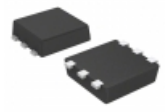
**5**

receive the goods

### Specifications

<b>Voltage - Threshold:</b>	2.6V
<b>Type:</b>	Voltage Detector
<b>Supplier Device Package:</b>	SOT-23-5
<b>Series:</b>	S-1003
<b>Reset Timeout:</b>	-
<b>Reset:</b>	Active Low
<b>Packaging:</b>	Tape & Reel (TR)
<b>Package / Case:</b>	SC-74A, SOT-753
<b>Output:</b>	Push-Pull, Totem Pole
<b>Operating Temperature:</b>	-40°C ~ 85°C (TA)
<b>Number of Voltages Monitored:</b>	1
<b>Mounting Type:</b>	Surface Mount

### Related products

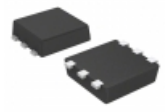


**S-1003CB28I-I6T1U**

IC VOLT DETECTOR

[SII Semiconductor Corporation](#)

RFQ



**S-1003CB29I-I6T1U**

IC VOLT DETECTOR

[SII Semiconductor Corporation](#)

RFQ



**S-1003CB27I-M5T1U**

IC VOLT DETECTOR

[SII Semiconductor Corporation](#)

RFQ



**S-1003CB24I-M5T1U**

IC VOLT DETECTOR

[SII Semiconductor Corporation](#)

RFQ



**S-1003CB24I-I6T1U**

IC VOLT DETECTOR

[SII Semiconductor Corporation](#)

RFQ



**S-1003CB25I-M5T1U**

IC VOLT DETECTOR

[SII Semiconductor Corporation](#)

RFQ



**S-1003CB27I-I6T1U**

IC VOLT DETECTOR

[SII Semiconductor Corporation](#)

RFQ



**S-1003CB28I-M5T1U**

IC VOLT DETECTOR

[SII Semiconductor Corporation](#)

RFQ



**S-1003CB26I-I6T1U**

IC VOLT DETECTOR

[SII Semiconductor Corporation](#)

RFQ



**S-1003CB25I-I6T1U**

IC VOLT DETECTOR

[SII Semiconductor Corporation](#)

RFQ

### Guess You May Looking For

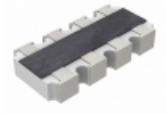


**RG2012P-623-B-T1**

RES SMD 62K OHM 0.1% 1/8W 0805

[Susumu](#)

RFQ



**YC164-FR-0730R1L**

RES ARRAY 4 RES 30.1 OHM 1206

[Yageo](#)

RFQ



**OD100JE**

RES 10 OHM 1/4W 5% AXIAL

[Ohmite](#)

RFQ



**RSF200JB-73-130R**

RES 130 OHM 2W 5% AXIAL

[Yageo](#)

RFQ

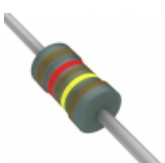


**MJ3572FE-R52**

RES 35.7K OHM 1/8W 1% AXIAL

[Ohmite](#)

RFQ



**PRNF14FTD1M21**

RES 1.21M OHM 1/4W 1% AXIAL

[Stackpole Electronics Inc.](#)

RFQ



**CMF074K7000JNEB**

RES 4.7K OHM 1/2W 5% AXIAL

[Vishay Dale](#)

RFQ

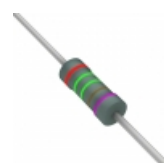


**RN60D3743FR36**

RES 374K OHM 1/4W 1% AXIAL

[Vishay Dale](#)

RFQ



**RNF14BAC2K55**

RES 2.55K OHM 1/4W .1% AXIAL

[Stackpole Electronics Inc.](#)

RFQ



**RNF14BAE75K9**

RES 75.9K OHM 1/4W .1% AXIAL

[Stackpole Electronics Inc.](#)

RFQ