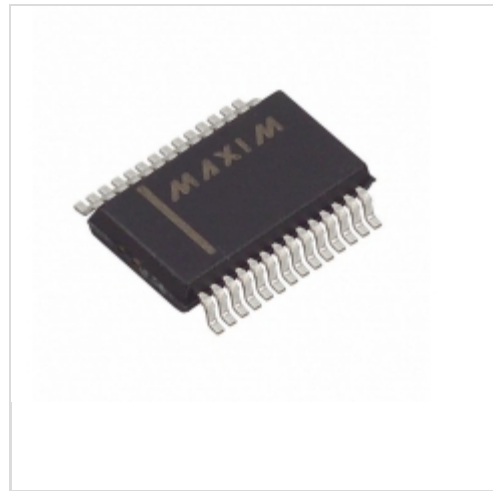


**MAX1757EAI+T**



**Maxim Integrated**

IC BATTERY CHRG LI+ 28-SSOP  
Lead free / RoHS Compliant  
Integrated Circuits (ICs)

- 1.MAX1757EAI+T.pdf
- 2.MAX1757EAI+T.pdf

**Buy Now**

**Out Stock**

**0 pcs**

Minimum:1

Multiples:100

Manufacturer lead time 10 weeks

part#MAX1757EAI+T is available, see description of MAX1757EAI+T as below .

use the request quote form to request MAX1757EAI+T price and lead time.

Buy Electronic Components at zeanoit.com .we are an independent distributor of electronic components with extensive inventory in stock.

The price and lead time for MAX1757EAI+T depending on the quantity required, availability and warehouse location.Contact us today and our sales team will send you quotation soon.

Email: sales@zeanoit.com

Shopping Process

**1**

**Confirm the product**

**2**

**submit the order**

**3**

**payment**

**4**

**wait for delivery**

**5**

**receive the goods**

Specifications

<b>Voltage - Supply (Max):</b>	14V
<b>Supplier Device Package:</b>	28-SSOP
<b>Series:</b>	-
<b>Programmable Features:</b>	Timer
<b>Packaging:</b>	Tape & Reel (TR)
<b>Package / Case:</b>	28-SSOP (0.209", 5.30mm Width)
<b>Operating Temperature:</b>	-40°C ~ 85°C (TA)
<b>Number of Cells:</b>	1 ~ 3
<b>Interface:</b>	-
<b>Fault Protection:</b>	-
<b>Current - Charging:</b>	Constant - Programmable
<b>Charge Current - Max:</b>	1.5A
<b>Battery Pack Voltage:</b>	14V (Max)
<b>Battery Chemistry:</b>	Lithium-Ion

Related products



**MAX17574EVKITB#**  
EVKIT FOR MAX17574  
[Maxim Integrated](#)

RFQ



**MAX1757EAI+**  
IC BATTERY CHRG LI+ 28-SSOP  
[Maxim Integrated](#)

RFQ



**MAX1758**  
in stock  
[MAXIM](#)

RFQ



**MAX1757EVKIT**  
EVALUATION KIT FOR MAX1757  
[Maxim Integrated](#)

RFQ



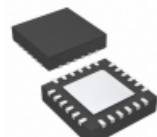
**MAX17582GTM**  
[MAXIM](#)

RFQ



**MAX1757EAI**  
in stock  
[MAXIM](#)

RFQ



**MAX17574ATG+**  
IC REG BUCK ADJ 3A SYNC 24TQFN  
[Maxim Integrated](#)

RFQ



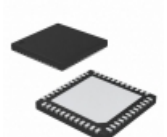
**MAX17574EVKITA#**  
EVKIT FOR MAX17574  
[Maxim Integrated](#)

RFQ



**MAX17582**  
in stock  
[MAXIM](#)

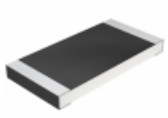
RFQ



**MAX17582GTL+**  
IC CTRLR PWM 1.2MHZ 48TQFN  
[Maxim Integrated](#)

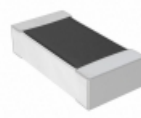
RFQ

Guess You May Looking For



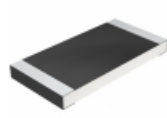
**CRCW25121R15FNTG**  
RES SMD 1.15 OHM 1% 1W 2512  
[Vishay Dale](#)

RFQ



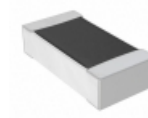
**RNCF0603BKE68K0**  
RES SMD 68K OHM 0.1% 1/10W 0603  
[Stackpole Electronics Inc.](#)

RFQ



**CRCW25122K87FKTG**  
RES SMD 2.87K OHM 1% 1W 2512  
[Vishay Dale](#)

RFQ



**RNCS0603BKE25K5**  
RES SMD 25.5KOHM 0.1% 1/16W 0603  
[Stackpole Electronics Inc.](#)

RFQ



**RNCF2010DTC174R**  
RES SMD 174 OHM 0.5% 1/3W 2010  
[Stackpole Electronics Inc.](#)

RFQ



**RNCF2010DTC37R4**  
RES SMD 37.4 OHM 0.5% 1/3W 2010  
[Stackpole Electronics Inc.](#)

RFQ



**RT0603CRC079K31L**  
RES SMD 9.31K OHM 1/10W 0603  
[Yageo](#)

RFQ



**RT0805CRD072K1L**  
RES SMD 2.1K OHM 0.25% 1/8W 0805  
[Yageo](#)

RFQ



**RT1206BRD0721RL**  
RES SMD 21 OHM 0.1% 1/4W 1206  
[Yageo](#)

RFQ



**RNCF2010DTE270K**  
RES SMD 270K OHM 0.5% 1/3W 2010  
[Stackpole Electronics Inc.](#)

RFQ