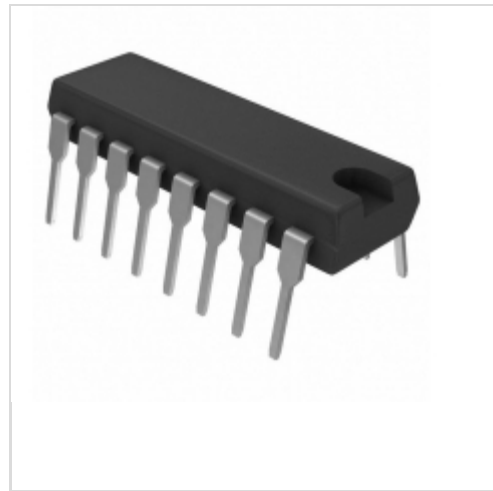


TEA2261



[STMicroelectronics](#)

IC CTRLR OVP UVLO 16DIP
Lead free / RoHS Compliant
Integrated Circuits (ICs)

[TEA2261.pdf](#)

Buy Now

part#TEA2261 is available, see description of TEA2261 as below .
use the request quote form to request TEA2261 price and lead time.
Buy Electronic Components at zeanoit.com .we are an independent distributor of electronic components with extensive inventory in stock.
The price and lead time for TEA2261 depending on the quantity required, availability and warehouse location.Contact us today and our sales team will send you quotation soon.
Email: sales@zeanoit.com

Shopping Process

1

Confirm the product

2

submit the order

3

payment

4

wait for delivery

5

receive the goods

Specifications

Voltage - Supply (Vcc/Vdd):	7.4 V ~ 20 V
Voltage - Start Up:	10.3V
Voltage - Breakdown:	-
Topology:	-
Supplier Device Package:	16-DIP
Series:	-
Power (Watts):	140W
Packaging:	Tube
Package / Case:	16-DIP (0.300", 7.62mm)
Output Isolation:	Isolated
Operating Temperature:	-20°C ~ 70°C (TA)
Mounting Type:	Through Hole
Internal Switch(s):	No
Frequency - Switching:	10kHz ~ 100kHz
Fault Protection:	Current Limiting, Over Voltage
Duty Cycle:	60%
Control Features:	Soft Start

Related products



TEA2037A
IC CORRECTION EAST/WEST 16DIP
[STMicroelectronics](#)

RFQ



TEA3718
in stock
[ST](#)

RFQ



TEA2262
in stock
[ST](#)

RFQ



TEA2031A
IC CORRECTION EAST/WEST 8DIP
[STMicroelectronics](#)

RFQ



TEA37185
[ST](#)

RFQ



TEA2260
[ST](#)

RFQ



TEA2124
in stock
[ST](#)

RFQ



TEA3717DP
IC MOTOR DRIVER PAR 16POWERDIP
[STMicroelectronics](#)

RFQ



TEA2029F
[ST](#)

RFQ



TEA3717
in stock
[ST](#)

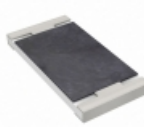
RFQ

Guess You May Looking For



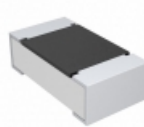
RNCF0805BTC365R
RES SMD 365 OHM 0.1% 1/8W 0805
[Stackpole Electronics Inc.](#)

RFQ



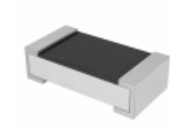
AC2512FK-0756KL
RES SMD 56K OHM 1% 1W 2512
[Yageo](#)

RFQ



CRCW060347R0KNEAIF
RES SMD 47 OHM 10% 1/10W 0603
[Vishay Dale](#)

RFQ



PT0402FR-070R1L
RES SMD 0.1 OHM 1% 1/16W 0402
[Yageo](#)

RFQ



RNCF1206DKE3K24
RES SMD 3.24K OHM 0.5% 1/4W 1206
[Stackpole Electronics Inc.](#)

RFQ



RG1005P-86R6-B-T5
RES SMD 86.6 OHM 0.1% 1/16W 0402
[Susumu](#)

RFQ



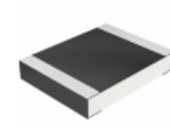
RT0805BRE075K9L
RES SMD 5.9K OHM 0.1% 1/8W 0805
[Yageo](#)

RFQ



RT0805BRE076K19L
RES SMD 6.19K OHM 0.1% 1/8W 0805
[Yageo](#)

RFQ



CRCW121023R7FKEAHP
RES SMD 23.7 OHM 1% 3/4W 1210
[Vishay Dale](#)

RFQ



CRGV2512F549K
RES SMD 549K OHM 1% 1W 2512
[TE Connectivity Passive Product](#)

RFQ