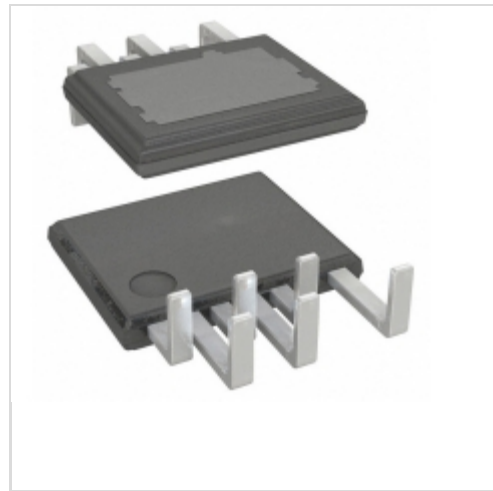


**LYT4211L**

**Power Integrations**

IC LED DRIVER OFFL 1.37A ESIP-7F  
Lead free / RoHS Compliant  
Integrated Circuits (ICs)

[LYT4211L.pdf](#)

**Buy Now**

We can supply LYT4211L, use the request quote form to request LYT4211L price and lead time. Zeano is a professional electronic components distributor. With 3+ Million line items of available electronic components can ship in short lead-time, over 250 thousand part numbers of electronic components in stock for immediately delivery, which may include part number LYT4211L. The price and lead time for LYT4211L depending on the quantity required and warehouse location. Contact us and our sales representative will provide you price. We look forward to work with you.

**Shopping Process**
**1**
**Confirm the product**
**2**
**submit the order**
**3**
**payment**
**4**
**wait for delivery**
**5**
**receive the goods**
**Specifications**

<b>Voltage - Supply (Min):</b>	85VAC
<b>Voltage - Supply (Max):</b>	132VAC
<b>Voltage - Output:</b>	-
<b>Type:</b>	AC DC Offline Switcher
<b>Topology:</b>	Flyback, Step-Down (Buck), Step-Up (Boost)
<b>Supplier Device Package:</b>	eSIP-7F
<b>Series:</b>	LYTSwitch™-4
<b>Packaging:</b>	Tube
<b>Package / Case:</b>	7-SSIP, 6 Leads, Exposed Pad, Formed Leads
<b>Operating Temperature:</b>	-40°C ~ 150°C (TJ)
<b>Number of Outputs:</b>	1
<b>Mounting Type:</b>	Through Hole
<b>Internal Switch(s):</b>	Yes
<b>Frequency:</b>	132kHz
<b>Dimming:</b>	-
<b>Current - Output / Channel:</b>	1.37A (Switch)
<b>Applications:</b>	-

**Related products**


**LYT4212E2**  
IC LED DRIVER OFFL 2.08A ESIP-7C  
[Power Integrations](#)

**RFQ**

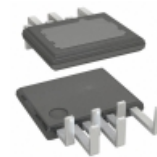

**LYT4211E**  
[POWER](#)

**RFQ**


**LYT4213E2**  
IC LED DRIVER OFFL 2.72A ESIP-7C  
[Power Integrations](#)

**RFQ**


**LYT3328D**  
IC LED DVR DIM 20.4W 1-ST 16SOIC  
[Power Integrations](#)

**RFQ**


**LYT4212L**  
IC LED DRIVER OFFL 2.08A ESIP-7F  
[Power Integrations](#)

**RFQ**


**LYT3328D-TL**  
IC LED DVR DIM 20.4W 1-ST 16SOIC  
[Power Integrations](#)

**RFQ**


**LYT4212E**  
[POWER](#)

**RFQ**


**LYT4211E2**  
IC LED DRIVER OFFL 1.37A 7-ESIP  
[Power Integrations](#)

**RFQ**


**LYT4213E**  
[POWER](#)

**RFQ**

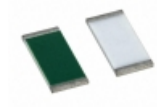

**LYT3326D-TL**  
IC LED DVR DIM 12.6W 1-ST 16SOIC  
[Power Integrations](#)

**RFQ**
**Guess You May Looking For**


**PAT0603E1322BST1**  
RES SMD 13.2KOHM 0.1% 0.15W 0603  
[Vishay Thin Film](#)

**RFQ**

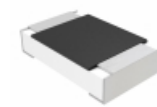

**RG1005N-2671-B-T5**  
RES SMD 2.67KOHM 0.1% 1/16W 0402  
[Susumu](#)

**RFQ**


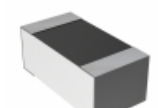
**PAT0603E1980BST1**  
RES SMD 198 OHM 0.1% 0.15W 0603  
[Vishay Thin Film](#)

**RFQ**


**RT2512BKE07191KL**  
RES SMD 191K OHM 0.1% 3/4W 2512  
[Yageo](#)

**RFQ**


**MCU08050F4021BP500**  
RES SMD 4.02K OHM 0.1% 1/8W 0805  
[Vishay Beyschlag](#)

**RFQ**


**RN73C1J5R62BTDF**  
RES SMD 5.62 OHM 0.1% 1/16W 0603  
[TE Connectivity Passive Product](#)

**RFQ**

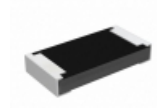

**TNPW0805909KBEEN**  
RES SMD 909K OHM 0.1% 1/8W 0805  
[Vishay Dale](#)

**RFQ**


**RG1005N-3740-W-T5**  
RES SMD 374 OHM 0.05% 1/16W 0402  
[Susumu](#)

**RFQ**


**RT0603WRB0716R5L**  
RES SMD 16.5OHM 0.05% 1/10W 0603  
[Yageo](#)

**RFQ**


**RCP1206B750RGTP**  
RES SMD 750 OHM 2% 11W 1206  
[Vishay Dale](#)

**RFQ**