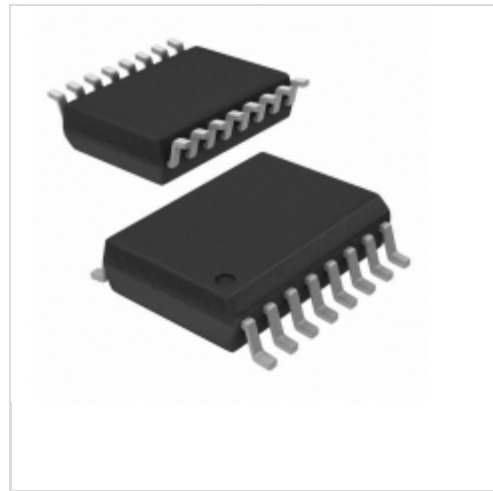



MC33023DWR2



[AMI Semiconductor / ON Semiconductor](#)

IC REG CTRLR ISO PWM 16-SOIC
Contains lead / RoHS non-compliant
Integrated Circuits (ICs)

 [MC33023DWR2.pdf](#)

 [Buy Now](#)

Images are for reference only.

See Product Specifications for product details.

If you are interested to buy MC33023DWR2, Just Email us.

Sales@zeanoit.com

our sales team will reply you within 24 hours

Shopping Process

1

Confirm the product

2

submit the order

3

payment

4

wait for delivery

5

receive the goods

Specifications

Voltage - Supply (Vcc/Vdd):	8.4 V ~ 30 V
Voltage - Start Up:	9.2V
Voltage - Breakdown:	-
Topology:	Forward
Supplier Device Package:	16-SOIC
Series:	-
Power (Watts):	-
Packaging:	Tape & Reel (TR)
Package / Case:	16-SOIC (0.295", 7.50mm Width)
Output Isolation:	Isolated
Operating Temperature:	-40°C ~ 105°C (TA)
Internal Switch(s):	No
Frequency - Switching:	1MHz
Fault Protection:	Current Limiting
Duty Cycle:	90%
Control Features:	Frequency Control, Soft Start

Related products



MC33025DWG
IC REG CTRLR ISO PWM 16-SOIC
[ON Semiconductor](#)

RFQ

molex

MC3301P
[ON](#)

RFQ

molex

MC33025DG
[ON](#)

RFQ



MC33002ADT
[ST](#)

RFQ



MC33023DWR2G
IC REG CTRLR ISO PWM 16-SOIC
[ON Semiconductor](#)

RFQ



MC33023DWG
IC REG CTRLR ISO PWM 16-SOIC
[ON Semiconductor](#)

RFQ



MC33023DW
IC REG CTRLR ISO PWM 16-SOIC
[ON Semiconductor](#)

RFQ



MC33025DWR2
IC REG CTRLR ISO PWM 16-SOIC
[ON Semiconductor](#)

RFQ



MC33023ADWR2
[MOTOROLA](#)

RFQ



MC33025DW
IC REG CTRLR ISO PWM 16-SOIC
[ON Semiconductor](#)

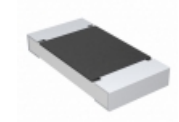
RFQ

Guess You May Looking For



CRGV2010F54K9
RES SMD 54.9K OHM 1% 1/2W 2010
[TE Connectivity Passive Product](#)

RFQ



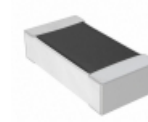
CRCW20103M16FKTF
RES SMD 3.16M OHM 1% 3/4W 2010
[Vishay Dale](#)

RFQ



AA2010FK-071M1L
RES SMD 1.1M OHM 1% 3/4W 2010
[Yageo](#)

RFQ



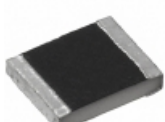
RNCF0603BTE82K5
RES SMD 82.5KOHM 0.1% 1/10W 0603
[Stackpole Electronics Inc.](#)

RFQ



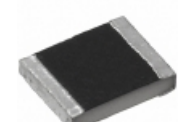
RG1005P-8660-B-T5
RES SMD 866 OHM 0.1% 1/16W 0402
[Susumu](#)

RFQ



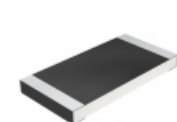
CRCW121056K0JNEAHP
RES SMD 56K OHM 5% 3/4W 1210
[Vishay Dale](#)

RFQ



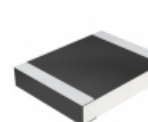
CRCW1210910KJNEAHP
RES SMD 910K OHM 5% 3/4W 1210
[Vishay Dale](#)

RFQ



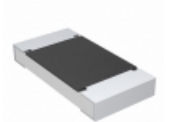
CRCW25123M30JNTG
RES SMD 3.3M OHM 5% 1W 2512
[Vishay Dale](#)

RFQ



CRCW1210732KFKEAHP
RES SMD 732K OHM 1% 3/4W 1210
[Vishay Dale](#)

RFQ



CRCW201023R7FKTF
RES SMD 23.7 OHM 1% 3/4W 2010
[Vishay Dale](#)

RFQ