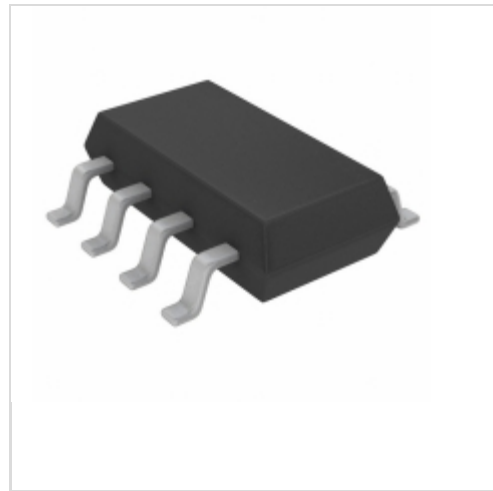


**LT3092ETS8#TRMPBF**



[Linear Technology / Analog Devices](#)

IC CURRENT SOURCE 1% TSOT23-8

Lead free / RoHS Compliant

Integrated Circuits (ICs)

[LT3092ETS8#TRMPBF.pdf](#)

**Buy Now**

**Out Stock**

**0 pcs**

Minimum:1

Multiples:100

Manufacturer lead time 10 weeks

Images are for reference only.

See Product Specifications for product details.

If you are interested to buy LT3092ETS8#TRMPBF,Just Email us.

Sales@zeanoit.com

our sales team will reply you within 24 hours

Shopping Process

**1**

**Confirm the product**

**2**

**submit the order**

**3**

**payment**

**4**

**wait for delivery**

**5**

**receive the goods**

Specifications

<b>Voltage - Input:</b>	1.2 V ~ 40 V
<b>Supplier Device Package:</b>	TSOT-23-8
<b>Series:</b>	-
<b>Sensing Method:</b>	-
<b>Packaging:</b>	Tape & Reel (TR)
<b>Package / Case:</b>	SOT-23-8 Thin, TSOT-23-8
<b>Operating Temperature:</b>	-40°C ~ 125°C
<b>Mounting Type:</b>	Surface Mount
<b>Function:</b>	Current Source
<b>Current - Output:</b>	200mA
<b>Accuracy:</b>	±1%

Related products

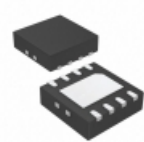


**LT3092EST#TRPBF**

IC PROG CURRENT SOURCE SOT223-3

[Linear Technology](#)

RFQ



**LT3092IDD#PBF**

IC PROG CURRENT SOURCE 8DFN

[Linear Technology](#)

RFQ



**LT3092ETS8#TRPBF**

IC PROG CURRENT SOURCE TSOT23-8

[Linear Technology](#)

RFQ



**LT3092IST#PBF**

IC PROG CUR SOURCE SOT223

[Linear Technology](#)

RFQ



**LT3092ETS8#PBF**

[LINEAR](#)

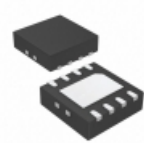
RFQ



**LT3092EST**

[LT](#)

RFQ



**LT3092IDD#TRPBF**

IC PROG CURRENT SOURCE 8DFN

[Linear Technology](#)

RFQ



**LT3092EST#PBF**

IC CURRENT SOURCE 1% SOT223-3

[Linear Technology](#)

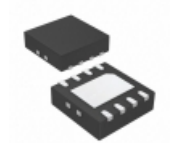
RFQ



**LT3092IST**

[LINEAR](#)

RFQ



**LT3092EDD#TRPBF**

IC PROG CURRENT SOURCE 8DFN

[Linear Technology](#)

RFQ

Guess You May Looking For

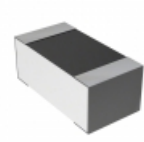


**RT0805CRB07232KL**

RES SMD 232K OHM 0.25% 1/8W 0805

[Yageo](#)

RFQ

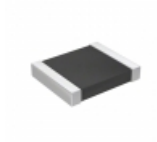


**CPF0603B53R6E1**

RES SMD 53.6 OHM 0.1% 1/16W 0603

[TE Connectivity Passive Product](#)

RFQ



**RT1210BRD07487KL**

RES SMD 487K OHM 0.1% 1/4W 1210

[Yageo](#)

RFQ



**AT1206CRD0730K9L**

RES SMD 30.9KOHM 0.25% 1/4W 1206

[Yageo](#)

RFQ



**AT1206CRD074K7L**

RES SMD 4.7K OHM 0.25% 1/4W 1206

[Yageo](#)

RFQ



**AT1206CRD074K87L**

RES SMD 4.87KOHM 0.25% 1/4W 1206

[Yageo](#)

RFQ



**RG3216P-2942-B-T1**

RES SMD 29.4K OHM 0.1% 1/4W 1206

[Susumu](#)

RFQ



**RT1206CRC0718R2L**

RES SMD 18.2 OHM 0.25% 1/4W 1206

[Yageo](#)

RFQ



**RT1206CRC07226RL**

RES SMD 226 OHM 0.25% 1/4W 1206

[Yageo](#)

RFQ



**RVC2010FT261K**

RES SMD 261K OHM 1% 1/2W 2010

[Stackpole Electronics Inc.](#)

RFQ