

RLD30P300UF



[Hamlin / Littelfuse](#)

FUSE RESETTABLE 3A 30V RADIAL
Contains lead / RoHS non-compliant
Circuit Protection

[RLD30P300UF.pdf](#)

[Buy Now](#)

We can supply Hamlin / Littelfuse RLD30P300UF, use the request quote form to request RLD30P300UF price, Hamlin / Littelfuse Datasheet PDF and lead time. Zeanoit.com is a professional electronic components distributor. With 3+ Million line items of available electronic components can ship in short lead-time, over 250 thousand part numbers of electronic components in stock for immediately delivery, which may include part number RLD30P300UF. The price and lead time for RLD30P300UF depending on the quantity required, availability and warehouse location.

Shopping Process

1

Confirm the product

2

submit the order

3

payment

4

wait for delivery

5

receive the goods

Specifications

Voltage - Max:	30V
Type:	Polymeric
Time to Trip:	10.8s
Thickness (Max):	-
Size / Dimension:	0.449" L x 0.118" W (11.40mm x 3.00mm)
Series:	POLY-FUSE®, RLD30
Resistance - Post Trip (R1) (Max):	80 mOhm
Resistance - Initial (Ri) (Min):	20 mOhm
Resistance - 25°C (Typ):	-
Ratings:	-
Packaging:	Tape & Box (TB)
Package / Case:	Radial, Disc
Operating Temperature:	-40°C ~ 85°C
Mounting Type:	Through Hole
Lead Spacing:	0.201" (5.10mm)
Height - Seated (Max):	0.681" (17.30mm)
Current - Trip (It):	6A
Current - Max:	40A
Current - Hold (Ih) (Max):	3A
Approvals:	cURus, TUV

Related products



RLD30P185UFF

FUSE RESETTABLE 1.85A 30V RADIAL
[Littelfuse Inc.](#)

RFQ



RLD30P400UF

FUSE RESETTABLE 4A 30V RADIAL
[Littelfuse Inc.](#)

RFQ



RLD30P160UFF

FUSE RESETTABLE 1.6A 30V RADIAL
[Littelfuse Inc.](#)

RFQ



RLD30P250UF

FUSE RESETTABLE 2.5A 30V RADIAL
[Littelfuse Inc.](#)

RFQ



RLD30P250UFF

FUSE RESETTABLE 2.5A 30V RADIAL
[Littelfuse Inc.](#)

RFQ



RLD30P300UFF

FUSE RESETTABLE 3A 30V RADIAL
[Littelfuse Inc.](#)

RFQ



RLD30P185UF

FUSE RESETTABLE 1.85A 30V RADIAL
[Littelfuse Inc.](#)

RFQ



RLD30P400UFF

FUSE RESETTABLE 4A 30V RADIAL
[Littelfuse Inc.](#)

RFQ



RLD30P500UFF

FUSE RESETTABLE 5A 30V RADIAL
[Littelfuse Inc.](#)

RFQ



RLD30P500UF

FUSE RESETTABLE 5A 30V RADIAL
[Littelfuse Inc.](#)

RFQ

Guess You May Looking For



824550601

TVS DIODE 60VWM 96.8VC DO214AB
[Wurth Electronics Inc.](#)

RFQ



SMDJ12A

TVS DIODE 12VWM 19.9VC SMD
[Littelfuse Inc.](#)

RFQ



1.5SMC220CA

TVS DIODE 185VWM 328VC SMD
[Littelfuse Inc.](#)

RFQ



MMBZ15VALT116

TRANSIENT VOLTAGE SUPPRESSOR, SS
[Rohm Semiconductor](#)

RFQ



MSMP9.0A-M3/89A

TVS DIODE 9VWM 15.4VC MICROSPM
[Vishay Semiconductor Diodes Division](#)

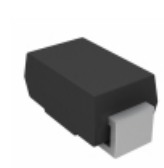
RFQ



SMCJ54A-E3/57T

TVS DIODE 54VWM 87.1VC SMC
[Vishay Semiconductor Diodes Division](#)

RFQ



SMAJ100A-E3/5A

TVS DIODE 100VWM 162VC SMA
[Vishay Semiconductor Diodes Division](#)

RFQ



SMCJ170CA-E3/57T

TVS DIODE 170VWM 275VC SMC
[Vishay Semiconductor Diodes Division](#)

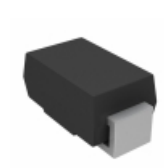
RFQ



GL12T-HG3-08

TVS DIODE 12VWM 24VC SOT23
[Vishay Semiconductor Diodes Division](#)

RFQ



P4SMA170AHE3/5A

TVS DIODE 145VWM 234VC SMA
[Vishay Semiconductor Diodes Division](#)

RFQ