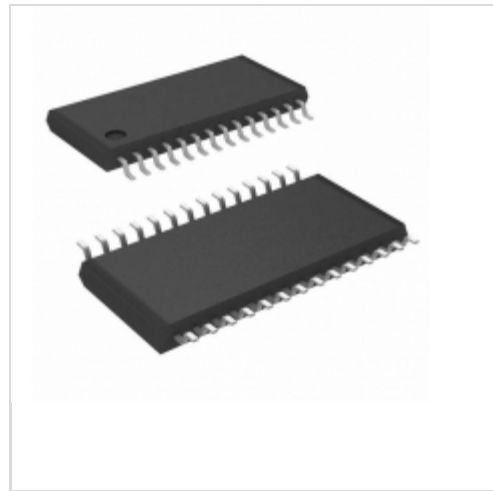


## MAXQ3180-RAN+T



**Maxim Integrated**

IC AFE POLYPHASE MULTI 28TSSOP

Lead free / RoHS Compliant

Integrated Circuits (ICs)

[1.MAXQ3180-RAN+T.pdf](#)

[2.MAXQ3180-RAN+T.pdf](#)

**Buy Now**

part#MAXQ3180-RAN+T is available, see description of MAXQ3180-RAN+T as below . use the request quote form to request MAXQ3180-RAN+T price and lead time. Buy Electronic Components at zeanoit.com .we are an independent distributor of electronic components with extensive inventory in stock. The price and lead time for MAXQ3180-RAN+T depending on the quantity required, availability and warehouse location.Contact us today and our sales team will send you quotation soon. Email: sales@zeanoit.com

### Shopping Process

**1**

Confirm the product

**2**

submit the order

**3**

payment

**4**

wait for delivery

**5**

receive the goods

### Specifications

<b>Voltage - Supply:</b>	2.7 V ~ 3.6 V
<b>Voltage - I/O Low:</b>	-
<b>Voltage - I/O High:</b>	-
<b>Supplier Device Package:</b>	28-TSSOP
<b>Series:</b>	MAXQ®
<b>Packaging:</b>	Tape & Reel (TR)
<b>Package / Case:</b>	28-TSSOP (0.173", 4.40mm Width)
<b>Operating Temperature:</b>	-40°C ~ 85°C
<b>Mounting Type:</b>	Surface Mount
<b>Meter Type:</b>	3 Phase
<b>Measurement Error:</b>	0.1%
<b>Input Impedance:</b>	-
<b>Current - Supply:</b>	8.5mA

### Related products



**MAXQ3180**

in stock  
[MAXIM](#)

RFQ



**MAXQ3180-RAN**

in stock  
[MAXIM](#)

RFQ



**MAXQ3181-RAN+**

IC AFE POLYPHASE LO-PWR 28-TSSOP  
[Maxim Integrated](#)

RFQ



**MAXQ3180\_09**

in stock  
[MAXIM](#)

RFQ



**MAXQ3180-KIT**

KIT EV REFRNC DSIGN FOR MAXQ3180  
[Maxim Integrated](#)

RFQ



**MAXQ3181**

in stock  
[MAXIM](#)

RFQ



**MAXQ3180-RAN+**

IC AFE POLYPHASE MULTI 28-TSSOP  
[Maxim Integrated](#)

RFQ



**MAXQ314-KIT**

KIT EV REFRNC DSIGN FOR MAXQ314  
[Maxim Integrated](#)

RFQ



**MAXQ3180\_0912**

in stock  
[MAXIM](#)

RFQ



**MAXQ3180-RBN+**

in stock  
[MAXIM](#)

RFQ

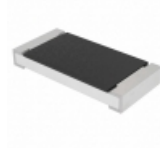
### Guess You May Looking For



**RT0603BRB0722R6L**

RES SMD 22.6 OHM 0.1% 1/10W 0603  
[Yageo](#)

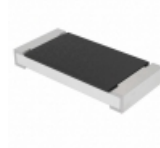
RFQ



**CRCW201017K4FKEFHP**

RES SMD 17.4K OHM 1% 1W 2010  
[Vishay Dale](#)

RFQ



**CRCW20108K66FKEFHP**

RES SMD 8.66K OHM 1% 1W 2010  
[Vishay Dale](#)

RFQ



**CRGS2010J1K2**

RES SMD 1.2K OHM 5% 3/4W 2010  
[TE Connectivity AMP Connectors](#)

RFQ



**RG3216N-1201-D-T5**

RES SMD 1.2K OHM 0.5% 1/4W 1206  
[Susumu](#)

RFQ



**RG3216N-59R0-D-T5**

RES SMD 59 OHM 0.5% 1/4W 1206  
[Susumu](#)

RFQ



**RNCF2512DKE30K0**

RES SMD 30K OHM 0.5% 1/2W 2512  
[Stackpole Electronics Inc.](#)

RFQ



**RG3216N-5603-D-T5**

RES SMD 560K OHM 0.5% 1/4W 1206  
[Susumu](#)

RFQ



**RNCF2512DKE8R20**

RES SMD 8.2 OHM 0.5% 1W 2512  
[Stackpole Electronics Inc.](#)

RFQ



**RG1005N-6981-D-T10**

RES SMD 6.98KOHM 0.5% 1/16W 0402  
[Susumu](#)

RFQ