

1301530114



[Affinity Medical Technologies - a Molex company](#)

20A GFCI AUTO MLD L5-20 2'
Contains lead / RoHS non-compliant
Circuit Protection

[1301530114.pdf](#)

Buy Now

Out Stock
0 pcs
Minimum:1
Multiples:100
Manufacturer lead time 10 weeks

part#1301530114 is available, see description of 1301530114 as below .
use the request quote form to request 1301530114 price and lead time.
Buy Electronic Components at zeanoit.com .we are an independent distributor of electronic components with extensive inventory in stock.
The price and lead time for 1301530114 depending on the quantity required, availability and warehouse location.Contact us today and our sales team will send you quotation soon.
Email: sales@zeanoit.com

Shopping Process

1

Confirm the product

2

submit the order

3

payment

4

wait for delivery

5

receive the goods

Specifications

Type:	In-Line Splice with 2' Leads
Specifications:	120V
Series:	-

Related products

molex

1301530116
PLUG/CONN 20A IN-LINE GFCI 25'
[Molex Connector Corporation](#)

RFQ

molex

1301530109
20A GFCI AUTO1FT FLYINGLEADS
[Molex Connector Corporation](#)

RFQ

molex

1301530126
GFCI MANUAL NEMA 5-20 20A
[Molex, LLC](#)

RFQ

molex

1301530135
20A GFCI MANUAL W/26W/4727W47
[Molex Connector Corporation](#)

RFQ

molex

1301530099
15A GFCI PLGAUTO FIELD ATTCHBL
[Molex Connector Corporation](#)

RFQ

molex

1301530136
20A GFCI MANUAL W/26W/4727W47
[Molex Connector Corporation](#)

RFQ

molex

1301530100
PLUG MANUAL 5-15A GFCI 120VAC
[Molex Connector Corporation](#)

RFQ

molex

1301530110
GFCI MANUAL 20A 2' FLYING LEADS
[Molex, LLC](#)

RFQ

molex

1301530132
20A/120V INLINE GFCIAUTO6'
[Molex Connector Corporation](#)

RFQ

molex

1301530111
PLUG/CONN IN-LINE GFCI 20A 18"
[Molex, LLC](#)

RFQ

Guess You May Looking For



SLD8S14A
TVS DIODE 14VWM 23.2VC SMT0263
[Littelfuse Inc.](#)

RFQ



3SMC22A TR13
TVS DIODE 22VWM 35.5VC SMC
[Central Semiconductor Corp](#)

RFQ



MMAD1108/TR13
TVS DIODE 75VWM 16SOIC
[Microsemi Corporation](#)

RFQ



SMBJ60CA-13-F
TVS DIODE 60VWM 96.8VC SMB
[Diodes Incorporated](#)

RFQ



M5KP51AE3
TVS DIODE 51VWM 82.4VC DO204AR
[Microsemi Corporation](#)

RFQ



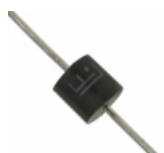
15KP200CA-TP
TVS DIODE 200VWM 322VC R6
[Micro Commercial Co](#)

RFQ



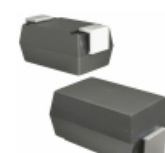
15KP33CA-TP
TVS DIODE 33VWM 54.8VC R6
[Micro Commercial Co](#)

RFQ



15KPA48CA
TVS DIODE 48VWM 77.7VC AXIAL
[Littelfuse Inc.](#)

RFQ



SMAJ300CA-TP
TVS DIODE 300VWM 486VC SMA
[Micro Commercial Co](#)

RFQ



20KPA44CA
TVS DIODE 44VWM 72.7VC AXIAL
[Littelfuse Inc.](#)

RFQ