

MAX6746KA31+T

Maxim Integrated

IC RESET MPU W/ADJ RESET SOT23-8

Lead free / RoHS Compliant

Integrated Circuits (ICs)

1.MAX6746KA31+T.pdf

2.MAX6746KA31+T.pdf

Buy Now
Out Stock
0 pcs

Minimum:1

Multiples:100

Manufacturer lead time 10 weeks

PRICE

1 pcs	\$7.78
10 pcs	\$7.34
25 pcs	\$5.88
50 pcs	\$5.58
100 pcs	\$5.14
250 pcs	\$4.88
500 pcs	\$3.67

We can supply Maxim Integrated MAX6746KA31+T, use the request quote form to request MAX6746KA31+T price, Maxim Integrated Datasheet PDF and lead time. Zeanoit.com is a professional electronic components distributor. With 3+ Million line items of available electronic components can ship in short lead-time, over 250 thousand part numbers of electronic components in stock for immediately delivery, which may include part number MAX6746KA31+T. The price and lead time for MAX6746KA31+T depending on the quantity required, availability and warehouse location.

Shopping Process

1
Confirm the product
2
submit the order
3
payment
4
wait for delivery
5
receive the goods

Specifications

Voltage - Threshold:	3.075V
Type:	Simple Reset/Power-On Reset
Supplier Device Package:	SOT-23-8
Series:	-
Reset Timeout:	Adjustable/Selectable
Reset:	Active Low
Packaging:	Tape & Reel (TR)
Package / Case:	SOT-23-8
Output:	Push-Pull, Totem Pole
Operating Temperature:	-40°C ~ 125°C (TA)
Number of Voltages Monitored:	1
Mounting Type:	Surface Mount

Related products


MAX6747

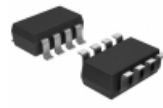
 in stock
MAXIM

RFQ


MAX6746KA31

MAXIM

RFQ


MAX6746KA46+T

 IC MPU/RESET CIRC SOT23-8
Maxim Integrated

RFQ


MAX6746KA31+

MAXIM

RFQ


MAX6746KA29

 in stock
MAXIM

RFQ


MAX6746KA29/V+T

MAXIM

RFQ


MAX6747KA16+T

 IC SUPERVISOR MPU LP SOT23-8
Maxim Integrated

RFQ


MAX6746KA46

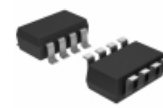
 in stock
MAXIM

RFQ


MAX6747KA16

 in stock
MAXIM

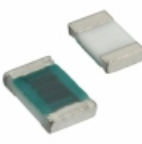
RFQ


MAX6746KA29+T

 IC MPU/RESET CIRC SOT23-8
Maxim Integrated

RFQ

Guess You May Looking For


RP2012T-1R0-J

 RES SMD 1 OHM 5% 1/3W 0805
Susumu

RFQ


RG1608V-4641-B-T1

 RES SMD 4.64KOHM 0.1% 1/10W 0603
Susumu

RFQ


RG2012P-2671-C-T5

 RES SMD 2.67KOHM 0.25% 1/8W 0805
Susumu

RFQ


RG3216P-2431-P-T1

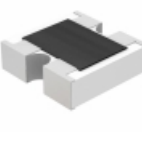
 RES SMD 2.43KOHM 0.02% 1/4W 1206
Susumu

RFQ


EXB-A10P473J

 RES ARRAY 8 RES 47K OHM 2512
Panasonic Electronic Components

RFQ


MNR12ERAPJ000

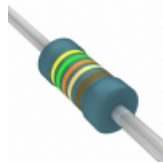
 RES ARRAY 2 RES ZERO OHM 0606
Rohm Semiconductor

RFQ


650FPR002E

 RES 0.002 OHM 5W 1% RADIAL
Ohmite

RFQ


MRS25000C4539FCT00

 RES 45.3 OHM 0.6W 1% AXIAL
Vishay BC Components

RFQ


CMF60562R00FKEA

 RES 562 OHM 1W 1% AXIAL
Vishay Dale

RFQ


CMF55681R00DHEB

 RES 681 OHM 1/2W .5% AXIAL
Vishay Dale

RFQ