

L9347LF-TR



STMicroelectronics

IC DRIVER LOW SIDE QUAD POWERSO3

Lead free / RoHS Compliant

Integrated Circuits (ICs)

[L9347LF-TR.pdf](#)

Buy Now

Out Stock

0 pcs

Minimum:1

Multiples:100

Manufacturer lead time 10 weeks

We can supply L9347LF-TR, use the request quote form to request L9347LF-TR price and lead time. Zeano is a professional electronic components distributor. With 3+ Million line items of available electronic components can ship in short lead-time, over 250 thousand part numbers of electronic components in stock for immediately delivery, which may include part number L9347LF-TR. The price and lead time for L9347LF-TR depending on the quantity required and warehouse location. Contact us and our sales representative will provide you price. We look forward to work with you.

Shopping Process

1

Confirm the product

2

submit the order

3

payment

4

wait for delivery

5

receive the goods

Specifications

Voltage - Supply (Vcc/Vdd):	Not Required
Voltage - Load:	4.8 V ~ 18 V
Switch Type:	General Purpose
Supplier Device Package:	PowerSO-36
Series:	-
Rds On (Typ):	-
Ratio - Input:Output:	1:1
Packaging:	Tape & Reel (TR)
Package / Case:	36-BSSOP (0.433", 11.00mm Width) Exposed Pad
Output Type:	N-Channel
Output Configuration:	Low Side
Operating Temperature:	-40°C ~ 150°C (TJ)
Number of Outputs:	4
Interface:	On/Off
Input Type:	Non-Inverting
Features:	Status Flag
Fault Protection:	Open Load Detect, Over Temperature
Current - Output (Max):	2.5A, 5A

Related products



L9341

in stock

[ST](#)

RFQ



L9348-TR

IC DRIVER QUAD LO SIDE PWRSOIC36

[STMicroelectronics](#)

RFQ



L9339MD-TR

IC DRIVER QUAD LOW SIDE 20SOIC

[STMicroelectronics](#)

RFQ



L9347LF

IC DRIVER LOW SIDE QUAD

POWERSO3

[STMicroelectronics](#)

RFQ



L9347PD

IC DRIVER QUAD LOW SIDE 36-SOIC

[STMicroelectronics](#)

RFQ



L9347PD-TR

IC DRIVER QUAD LOW SIDE 36SOIC

[STMicroelectronics](#)

RFQ



L9339D

in stock

[ST](#)

RFQ



L9348

in stock

[ST](#)

RFQ



L9339MD

IC DRIVER QUAD LOW SIDE SOIC-20

[STMicroelectronics](#)

RFQ



L9348

IC DRIVER QUAD LO SIDE PWRSOIC36

[STMicroelectronics](#)

RFQ

Guess You May Looking For

BOURNS

PWR263S-20-8R20FE

RES SMD 8.2 OHM 1% 20W D2PAK

[Bourns Inc.](#)

RFQ



RG3216V-3320-P-T1

RES SMD 332 OHM 0.02% 1/4W 1206

[Susumu](#)

RFQ



RG3216V-1691-P-T1

RES SMD 1.69KOHM 0.02% 1/4W 1206

[Susumu](#)

RFQ

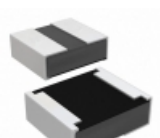


RG3216V-3011-P-T1

RES SMD 3.01KOHM 0.02% 1/4W 1206

[Susumu](#)

RFQ



RCP0505W39R0GS2

RES SMD 39 OHM 2% 5W 0505

[Vishay Dale](#)

RFQ

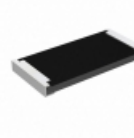


PWR263S-20-47R0JE

RES SMD 47 OHM 5% 20W D2PAK

[Bourns Inc.](#)

RFQ

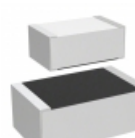


RCP2512B56R0JWB

RES SMD 56 OHM 5% 22W 2512

[Vishay Dale](#)

RFQ

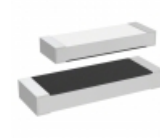


M55342K06B2B15RWS

RES SMD 2.15KOHM 0.1% 0.15W 0805

[Vishay Dale](#)

RFQ

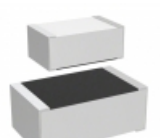


M55342E05B10E0RWS

RES SMD 10K OHM 1% 0.225W 2208

[Vishay Dale](#)

RFQ



M55342E06B1B82RT0

RES SMD 1.82KOHM 0.1% 0.15W 0805

[Vishay Dale](#)

RFQ

