

**WIS-ISM-WH**



**Thomas Research Products**  
IN-LINE SWITCH MODULE 120-277V  
Contains lead / RoHS non-compliant  
RF/IF and RFID

- [1.WIS-ISM-WH.pdf](#)
- [2.WIS-ISM-WH.pdf](#)

**Buy Now**

Images are for reference only.  
See Product Specifications for product details.  
If you are interested to buy WIS-ISM-WH,Just Email us.  
Sales@zeanoit.com  
our sales team will reply you within 24 hours

Shopping Process



**1**  
Confirm the product



**2**  
submit the order



**3**  
payment



**4**  
wait for delivery



**5**  
receive the goods

Specifications

<b>Voltage - Supply:</b>	120 ~ 277 VAC
<b>Series:</b>	wiSTAR™
<b>Sensitivity:</b>	-
<b>Power - Output:</b>	-
<b>Modulation or Protocol:</b>	EnOcean
<b>Interface:</b>	Analog
<b>Function:</b>	Receiver
<b>Frequency:</b>	902MHz
<b>Features:</b>	-
<b>Data Rate (Max):</b>	-
<b>Applications:</b>	Home/Building Automation, Industrial Control and Monitoring

Related products



**WIS-DRP-WH**  
DOUBLE ROCKER PAD SWITCH WHITE  
[Thomas Research Products](#)

RFQ



**WIS-PSM-WH**  
PLUG-IN SWITCH MODULE WHITE  
[Thomas Research Products](#)

RFQ



**WISE-1020-0S01E**  
WIRELESS IOT NODE WITH SMA  
CONNE  
[Advantech Corp](#)

RFQ



**WIS-SRP-WH**  
SINGLE ROCKER PAD SWITCH  
[Thomas Research Products](#)

RFQ



**WIS-OSC-WH**  
OCCUPANCY SENSOR CEILING  
MOUNTED  
[Thomas Research Products](#)

RFQ



**WIS-OSW-WH**  
OCCUPANCY SENSOR WALL MOUNTED  
[Thomas Research Products](#)

RFQ



**WIS-DSM-WH**  
DAYLIGHT SENSOR MODULE WHITE  
[Thomas Research Products](#)

RFQ



**WIS-KCS-WH**  
KEY CARD SWITCH WHITE  
[Thomas Research Products](#)

RFQ



**WISE-1020-0C01E**  
WIRELESS IOT NODE WITH CHIP ANTE  
[Advantech Corp](#)

RFQ



**WISDK01BI-02**  
KIT DEV 802.11B/G WISM TCP/IP  
[Laird - Embedded Wireless Solutions](#)

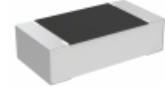
RFQ

Guess You May Looking For



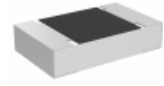
**RG1005V-161-P-T1**  
RES SMD 160 OHM 0.02% 1/16W 0402  
[Susumu](#)

RFQ



**TNPU0603127RAZEN00**  
RES SMD 127 OHM 0.05% 1/10W 0603  
[Vishay Dale](#)

RFQ



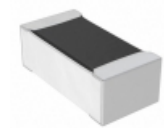
**TNPU0805200KAZEN00**  
RES SMD 200K OHM 0.05% 1/8W 0805  
[Vishay Dale](#)

RFQ



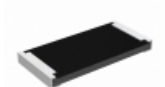
**RG3216V-1002-B-T5**  
RES SMD 10K OHM 0.1% 1/4W 1206  
[Susumu](#)

RFQ



**RN73C1E768RBTG**  
RES SMD 768 OHM 0.1% 1/16W 0402  
[TE Connectivity Passive Product](#)

RFQ



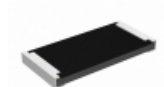
**RCP2512B180RJS3**  
RES SMD 180 OHM 5% 22W 2512  
[Vishay Dale](#)

RFQ



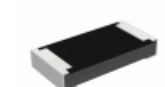
**RCP0603W130RGS2**  
RES SMD 130 OHM 2% 3.9W 0603  
[Vishay Dale](#)

RFQ



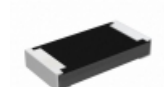
**RCP2512B240RGEB**  
RES SMD 240 OHM 2% 22W 2512  
[Vishay Dale](#)

RFQ



**RCP1206B510RJEC**  
RES SMD 510 OHM 5% 11W 1206  
[Vishay Dale](#)

RFQ



**RCP1206B36R0GEC**  
RES SMD 36 OHM 2% 11W 1206  
[Vishay Dale](#)

RFQ