

## W25Q64DWSFIG



### Winbond Electronics Corporation

IC FLASH 64MBIT 104MHZ 16SOIC  
Lead free / RoHS Compliant  
Integrated Circuits (ICs)

[W25Q64DWSFIG.pdf](#)

**Buy Now**

We can supply Winbond Electronics Corporation W25Q64DWSFIG, use the request quote form to request W25Q64DWSFIG price, Winbond Electronics Corporation Datasheet PDF and lead time. Zeano.com is a professional electronic components distributor. With 3+ Million line items of available electronic components can ship in short lead-time, over 250 thousand part numbers of electronic components in stock for immediately delivery, which may include part number W25Q64DWSFIG. The price and lead time for W25Q64DWSFIG depending on the quantity required, availability and warehouse location.

### Shopping Process

**1**

Confirm the product

**2**

submit the order

**3**

payment

**4**

wait for delivery

**5**

receive the goods

### Specifications

<b>Voltage - Supply:</b>	1.7 V ~ 1.95 V
<b>Supplier Device Package:</b>	16-SOIC
<b>Speed:</b>	104MHz
<b>Series:</b>	SpiFlash®
<b>Packaging:</b>	Tube
<b>Package / Case:</b>	16-SOIC (0.295", 7.50mm Width)
<b>Operating Temperature:</b>	-40°C ~ 85°C (TA)
<b>Memory Type:</b>	Non-Volatile
<b>Memory Size:</b>	64Mb (8M x 8)
<b>Memory Format:</b>	FLASH
<b>Interface:</b>	SPI Serial

### Related products

*winbond*

**W25Q64DWSIG**  
[WINBOND](#)

RFQ

*winbond*

**W25Q64CVSSIP**  
[WINBOND](#)

RFQ

*winbond*

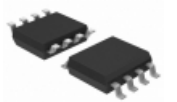
**W25Q64CVTIM**  
[WINBOND](#)

RFQ

*winbond*

**W25Q64DWSTIM**  
[WINBOND](#)

RFQ



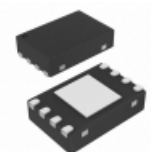
**W25Q64DWSSIG**  
IC FLASH 64MBIT 104MHZ 8SOIC  
[Winbond Electronics](#)

RFQ

*winbond*

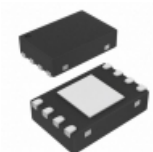
**W25Q64CVSTIM**  
[WINBOND](#)

RFQ



**W25Q64CVZEIG**  
IC FLASH 64MBIT 80MHZ 8WSOIC  
[Winbond Electronics](#)

RFQ



**W25Q64DWZEIG**  
IC FLASH 64MBIT 104MHZ 8WSOIC  
[Winbond Electronics](#)

RFQ

*winbond*

**W25Q64DWSS1G**  
[WINBOND](#)

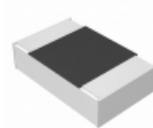
RFQ

*winbond*

**W25Q64DWIG**  
[WINBOND](#)

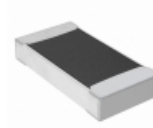
RFQ

### Guess You May Looking For



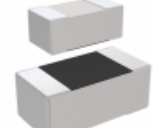
**ERA-6AEB3163V**  
RES SMD 316K OHM 0.1% 1/8W 0805  
[Panasonic Electronic Components](#)

RFQ



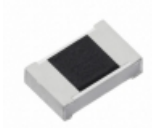
**RMCF1206FT31R6**  
RES SMD 31.6 OHM 1% 1/4W 1206  
[Stackpole Electronics Inc.](#)

RFQ



**RC1005J3R0CS**  
RES SMD 3 OHM 5% 1/16W 0402  
[Samsung Electro-Mechanics America, Inc.](#)

RFQ



**ERJ-PA3J223V**  
RES SMD 22K OHM 5% 1/4W 0603  
[Panasonic Electronic Components](#)

RFQ



**RC0603DR-0711K5L**  
RES SMD 11.5KOHM 0.5% 1/10W 0603  
[Yageo](#)

RFQ



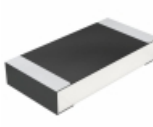
**RT0805FRE0756K2L**  
RES SMD 56.2K OHM 1% 1/8W 0805  
[Yageo](#)

RFQ

*YAGEO*

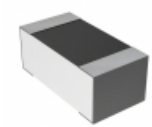
**AA1206FR-07536RL**  
RES SMD 536 OHM 1% 1/4W 1206  
[Yageo](#)

RFQ



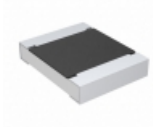
**CRCW12061R96FNTA**  
RES SMD 1.96 OHM 1% 1/4W 1206  
[Vishay Dale](#)

RFQ



**CPF0603F4R32C1**  
RES SMD 4.32 OHM 1% 1/16W 0603  
[TE Connectivity Passive Product](#)

RFQ



**CRCW12102R74FNTB**  
RES SMD 2.74 OHM 1% 1/2W 1210  
[Vishay Dale](#)

RFQ