

BR24T32FVJ-WE2



LAPIS Semiconductor

IC EEPROM 32KBIT 400KHZ 8TSSOP
Lead free / RoHS Compliant
Integrated Circuits (ICs)

[BR24T32FVJ-WE2.pdf](#)

Buy Now

Out Stock

0 pcs

Minimum:1

Multiples:100

Manufacturer lead time 10 weeks

PRICE

2500 pcs	\$0.293
5000 pcs	\$0.27

We can supply LAPIS Semiconductor BR24T32FVJ-WE2, use the request quote form to request BR24T32FVJ-WE2 price, LAPIS Semiconductor Datasheet PDF and lead time. Zeanoit.com is a professional electronic components distributor. With 3+ Million line items of available electronic components can ship in short lead-time, over 250 thousand part numbers of electronic components in stock for immediately delivery, which may include part number BR24T32FVJ-WE2. The price and lead time for BR24T32FVJ-WE2 depending on the quantity required, availability and warehouse location.

Shopping Process

1

Confirm the product

2

submit the order

3

payment

4

wait for delivery

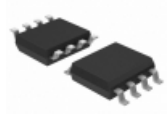
5

receive the goods

Specifications

Voltage - Supply:	1.6 V ~ 5.5 V
Supplier Device Package:	8-TSSOP-BJ
Speed:	400kHz
Series:	-
Packaging:	Tape & Reel (TR)
Package / Case:	8-TSSOP, 8-MSOP (0.118", 3.00mm Width)
Operating Temperature:	-40°C ~ 85°C (TA)
Memory Type:	Non-Volatile
Memory Size:	32Kb (4K x 8)
Memory Format:	EEPROM
Interface:	I ² C, 2-Wire Serial

Related products



BR24T32F-WE2
IC EEPROM 32KBIT 400KHZ 8SOP
[Rohm Semiconductor](#)

RFQ



BR24T32FJ-WGE2
[ROHM](#)

RFQ



BR24T32FV-WE2
IC EEPROM 32KBIT 400KHZ 8SSOPB
[Rohm Semiconductor](#)

RFQ



BR24T32FJ-WE2
IC EEPROM 32KBIT 400KHZ 8SOP-J
[Rohm Semiconductor](#)

RFQ



BR24T32FVM-WTR
IC EEPROM 32KBIT 400KHZ 8MSOP
[Rohm Semiconductor](#)

RFQ



BR24T32FVT-WGE2
[ROHM](#)

RFQ



BR24T32FVT-WE2DKR-ND
[ROHM](#)

RFQ



BR24T32FVT-WE2
IC EEPROM 32KBIT 400KHZ 8TSSOP-B
[Rohm Semiconductor](#)

RFQ



BR24T32NUX-WGTR
in stock
[ROHM](#)

RFQ



BR24T32-W
IC EEPROM 32KBIT 400KHZ 8DIP
[Rohm Semiconductor](#)

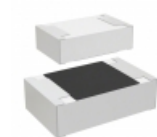
RFQ

Guess You May Looking For



CRCW0402143KFKED
RES SMD 143K OHM 1% 1/16W 0402
[Vishay Dale](#)

RFQ



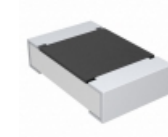
CR0805-FX-6190GLF
RES SMD 619 OHM 1% 1/8W 0805
[Bourns Inc.](#)

RFQ



AA0603FR-0722K6L
RES SMD 22.6K OHM 1% 1/10W 0603
[Yageo](#)

RFQ



CRCW0805324RFKEB
RES SMD 324 OHM 1% 1/8W 0805
[Vishay Dale](#)

RFQ



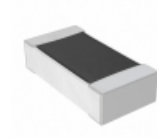
RT0805FRE07332RL
RES SMD 332 OHM 1% 1/8W 0805
[Yageo](#)

RFQ



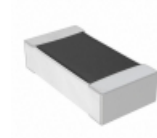
CRCW04022K20FKTD
RES SMD 2.2K OHM 1% 1/16W 0402
[Vishay Dale](#)

RFQ



RNCF0603DTC5R62
RES SMD 5.62 OHM 0.5% 1/10W 0603
[Stackpole Electronics Inc.](#)

RFQ



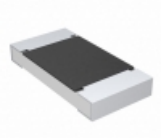
RNCF0603DTE4R75
RES SMD 4.75 OHM 0.5% 1/10W 0603
[Stackpole Electronics Inc.](#)

RFQ



RG2012P-3403-D-T5
RES SMD 340K OHM 0.5% 1/8W 0805
[Susumu](#)

RFQ



CRCW20106R80FNEF
RES SMD 6.8 OHM 1% 3/4W 2010
[Vishay Dale](#)

RFQ