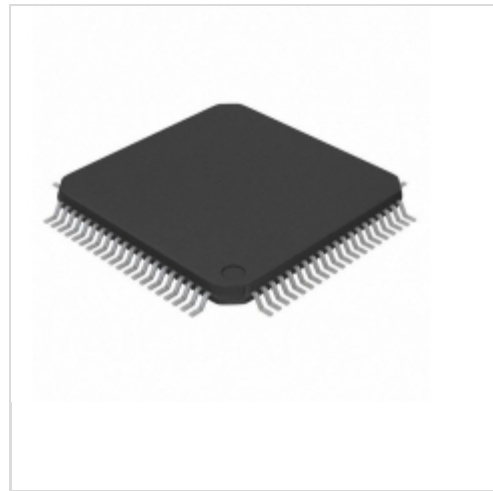


MB9BF467MPMC1-G-JNE2


[Cypress Semiconductor](#)
 IC MCU 32BIT 800KB FLASH 80LQFP
 Lead free / RoHS Compliant
 Integrated Circuits (ICs)

[MB9BF467MPMC1-G-JNE2.pdf](#)

[Buy Now](#)

Out Stock

0 pcs

Minimum:1

Multiples:100

Manufacturer lead time 10 weeks

part#MB9BF467MPMC1-G-JNE2 is available, see description of MB9BF467MPMC1-G-JNE2 as below .

use the request quote form to request MB9BF467MPMC1-G-JNE2 price and lead time. Buy Electronic Components at zeanoit.com .we are an independent distributor of electronic components with extensive inventory in stock.

The price and lead time for MB9BF467MPMC1-G-JNE2 depending on the quantity required, availability and warehouse location.Contact us today and our sales team will send you quotation soon.

Email: sales@zeanoit.com

Shopping Process

1

Confirm the product

2

submit the order

3

payment

4

wait for delivery

5

receive the goods

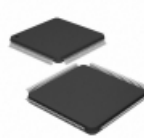
Specifications

Voltage - Supply (Vcc/Vdd):	2.7 V ~ 5.5 V
Supplier Device Package:	80-LQFP (14x14)
Speed:	160MHz
Series:	FM4 MB9B460R
RAM Size:	96K x 8
Program Memory Type:	FLASH
Program Memory Size:	800KB (800K x 8)
Peripherals:	DMA, LVD, POR, PWM, WDT
Packaging:	Tray
Package / Case:	80-LQFP
Oscillator Type:	Internal
Operating Temperature:	-40°C ~ 125°C (TA)
Number of I/O:	63
EEPROM Size:	-
Data Converters:	A/D 16x12b, D/A 2x12b
Core Size:	32-Bit
Core Processor:	ARM® Cortex®-M4F
Connectivity:	CAN, CSIO, I ² C, LIN, UART/USART

Related products


MB9BF467NPMC-G-JNE2
 IC MCU 32BIT 800KB FLASH 100LQFP
[Cypress Semiconductor Corp](#)

[RFQ](#)



MB9BF467RPMC-G-JNE2
 IC MCU 32BIT 800KB FLASH 120LQFP
[Cypress Semiconductor Corp](#)

[RFQ](#)



MB9BF466NPMC-G-JNE2
 IC MCU 32BIT 544KB FLASH 100LQFP
[Cypress Semiconductor Corp](#)

[RFQ](#)



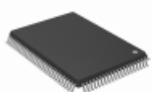
MB9BF466RBGL-GK7E1
 IC MCU 32BIT 544KB FLASH 144BGA
[Cypress Semiconductor Corp](#)

[RFQ](#)



MB9BF467RBGL-GK7E1
 IC MCU 32BIT 800KB FLASH 144BGA
[Cypress Semiconductor Corp](#)

[RFQ](#)



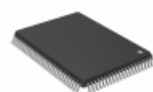
MB9BF466NPQC-G-JNE2
 IC MCU 32BIT 544KB FLASH 100QFP
[Cypress Semiconductor Corp](#)

[RFQ](#)



MB9BF467NBGL-GE1
 IC MCU 32BIT 800KB FLASH 112BGA
[Cypress Semiconductor Corp](#)

[RFQ](#)



MB9BF467NPQC-G-JNE2
 IC MCU 32BIT 800KB FLASH 100QFP
[Cypress Semiconductor Corp](#)

[RFQ](#)



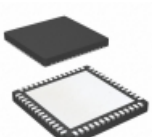
MB9BF466RPMC-G-JNE2
 IC MCU 32BIT 544KB FLASH 120LQFP
[Cypress Semiconductor Corp](#)

[RFQ](#)



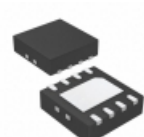
MB9BF467MPMC-G-JNE2
 IC MCU 32BIT 800KB FLASH 80LQFP
[Cypress Semiconductor Corp](#)

[RFQ](#)

Guess You May Looking For


TLC59581RTQR
 IC LED DRIVER 48CH 56QFN
[Texas Instruments](#)

[RFQ](#)



ISL6146CFRZ-T
 IC OR CTRLR N+1 8DFN
[Intersil](#)

[RFQ](#)



MAX6452UT29L+T
 IC MPU RESET 2.925V SOT23-6
[Maxim Integrated](#)

[RFQ](#)



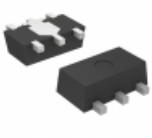
MAX6315US26D3+T
 IC RESET CIRCUIT 2.63V SOT143-4
[Maxim Integrated](#)

[RFQ](#)



LTC3112EFE#PBF
 IC REG BUCK BST ADJ 2.5A 20TSSOP
[Linear Technology](#)

[RFQ](#)



S-1155B43-U5T1G
 IC REG LINEAR 4.3V 0.5A SOT89-5
[SII Semiconductor Corporation](#)

[RFQ](#)



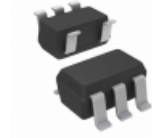
S-1711C2525-I6T1U
 IC REG LIN 2.5V/2.5V 0.15A SNT6A
[SII Semiconductor Corporation](#)

[RFQ](#)



LM317MDCYG3
 IC REG LINEAR ADJ 0.5A SOT223
[Texas Instruments](#)

[RFQ](#)



REG102NA-5/3KG4
 IC REG LDO 5V 0.25A SOT23-5
[Texas Instruments](#)

[RFQ](#)



MIC5259-3.0BD5-TR
 IC REG LDO 3V 0.3A TSOT23-5
[Microchip Technology](#)

[RFQ](#)

