

**38215000410**



Hamlin / Littelfuse

FUSE BOARD MOUNT 5A 250VAC RAD

Lead free / RoHS Compliant

Circuit Protection

[38215000410.pdf](#)

**Buy Now**

part#38215000410 is available, see description of 38215000410 as below .  
use the request quote form to request 38215000410 price and lead time.  
Buy Electronic Components at zeanoit.com .we are an independent distributor of electronic components with extensive inventory in stock.  
The price and lead time for 38215000410 depending on the quantity required, availability and warehouse location.Contact us today and our sales team will send you quotation soon.  
Email: sales@zeanoit.com

**Out Stock**

**0 pcs**

Minimum:1

Multiples:100

Manufacturer lead time 10 weeks

**PRICE**

1 pcs	\$0.81
5 pcs	\$0.784
10 pcs	\$0.734
50 pcs	\$0.607
100 pcs	\$0.506
250 pcs	\$0.493
500 pcs	\$0.417
1000 pcs	\$0.367
5000 pcs	\$0.329

Shopping Process

**1**

Confirm the product

**2**

submit the order

**3**

payment

**4**

wait for delivery

**5**

receive the goods

Specifications

<b>Voltage Rating - DC:</b>	-
<b>Voltage Rating - AC:</b>	250V
<b>Size / Dimension:</b>	0.335" Dia x 0.315" H (8.50mm x 8.00mm)
<b>Series:</b>	TR5® 382
<b>Response Time:</b>	Slow
<b>Packaging:</b>	Bulk
<b>Package / Case:</b>	Radial, Can, Vertical
<b>Operating Temperature:</b>	-40°C ~ 85°C
<b>Mounting Type:</b>	Through Hole
<b>Melting I<sup>2</sup>t:</b>	90
<b>Fuse Type:</b>	Board Mount (Cartridge Style Excluded)
<b>DC Cold Resistance:</b>	0.0108 Ohm
<b>Current Rating:</b>	5A
<b>Color:</b>	-
<b>Breaking Capacity @ Rated Voltage:</b>	100A
<b>Approvals:</b>	CQC, cULus, KC, PSE/JET, SEMKO, VDE

Related products

Weidmüller

**382160000**

EGR 3 24VDC/220VAC SPDT

[Weidmuller](#)

RFQ



**38215000000**

FUSE BOARD MOUNT 5A 250VAC RAD

[Littelfuse Inc.](#)

RFQ



**38213150430**

FUSE BRD MNT 3.15A 250VAC RADIAL

[Littelfuse Inc.](#)

RFQ



**38214000430**

FUSE BOARD MOUNT 4A 250VAC RAD

[Littelfuse Inc.](#)

RFQ



**38216300430**

FUSE BOARD MOUNT 6.3A 250VAC RAD

[Littelfuse Inc.](#)

RFQ



**38215000430**

FUSE BOARD MOUNT 5A 250VAC RAD

[Littelfuse Inc.](#)

RFQ



**38216300000**

FUSE BOARD MOUNT 6.3A 250VAC RAD

[Littelfuse Inc.](#)

RFQ



**38216300410**

FUSE BOARD MOUNT 6.3A 250VAC RAD

[Littelfuse Inc.](#)

RFQ



**38214000410**

FUSE BOARD MOUNT 4A 250VAC RAD

[Littelfuse Inc.](#)

RFQ



**38214000000**

FUSE BOARD MOUNT 4A 250VAC RAD

[Littelfuse Inc.](#)

RFQ

Guess You May Looking For



**0251.125NRT2**

FUSE BOARD MNT 125MA 125VAC/VDC

[Littelfuse Inc.](#)

RFQ



**BK/GMA-V-500MA**

FUSE GLASS 500MA 250VAC 5X20MM

[Eaton](#)

RFQ



**SL1024B450R**

GDT 450V 20KA THROUGH HOLE

[Littelfuse Inc.](#)

RFQ



**GTCA28-471M-R05**

GDT 470V 20% 5KA THROUGH HOLE

[Littelfuse Inc.](#)

RFQ



**2036-40-B**

GDT 400V 20% 10KA THROUGH HOLE

[Bourns Inc.](#)

RFQ



**SG260**

ICL 0.5 OHM 20% 30A

[Ametherm](#)

RFQ



**PESD15VL2BT,215**

TVS DIODE 15VWM 44VC SOT23

[Nexperia USA Inc.](#)

RFQ



**SMAJ33A**

TVS DIODE 33VWM 53.3VC DO214AC

[Bourns Inc.](#)

RFQ

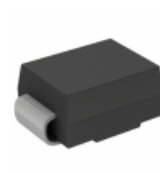


**SMBJ17A-E3/52**

TVS DIODE 17VWM 27.6VC SMB

[Vishay Semiconductor Diodes Division](#)

RFQ



**P6SMB75CA**

TVS DIODE 64.1VWM 103VC SMD

[Littelfuse Inc.](#)

RFQ

