

**BMI-S-230-F-R**

**Laird Technologies - EMI**
**BOARD SHIELD 2INX1.5IN FRAME**

Lead free / RoHS Compliant

RF/IF and RFID

[1.BMI-S-230-F-R.pdf](#)
[2.BMI-S-230-F-R.pdf](#)
[3.BMI-S-230-F-R.pdf](#)
**Buy Now**
**Out Stock**
**0 pcs**

Minimum:1

Multiples:100

Manufacturer lead time 10 weeks

**PRICE**

190 pcs	\$1.285
380 pcs	\$1.127
570 pcs	\$0.996
950 pcs	\$0.871
1330 pcs	\$0.787
4750 pcs	\$0.734
9500 pcs	\$0.697

Images are for reference only.

See Product Specifications for product details.

If you are interested to buy BMI-S-230-F-R,Just Email us.

[Sales@zeanoit.com](mailto:Sales@zeanoit.com)

our sales team will reply you within 24 hours

## Shopping Process

**1**
**Confirm the product**
**2**
**submit the order**
**3**
**payment**
**4**
**wait for delivery**
**5**
**receive the goods**

## Specifications

**Width - Overall:** 2.000" (50.80mm)

**Ventilation:** -

**Type:** Frame

**Series:** -

**Packaging:** Tape & Reel (TR)

**Mounting Type:** Solder

**Length - Overall:** 1.500" (38.10mm)

**Height - Overall:** 0.200" (5.08mm)

## Related products


**BMI-S-210-F**

BOARD SHIELD 1.201X1.732" FRAME

[Laird Technologies EMI](#)

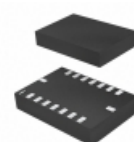
RFQ


**BMI-S-212-C**

BLS 2PSH CV SNSAT LP

[Laird Technologies EMI](#)

RFQ


**BMI055**

IMU ACCEL/GYRO I2C/SPI 16LGA

[Bosch Sensortec](#)

RFQ


**BMI058**
[BOSCH](#)

RFQ


**BMI-S-226-C**

BLS 2PSH CV SNSAT LP

[Laird Technologies EMI](#)

RFQ


**BMI160**

IMU ACCEL/GYRO I2C/SPI 14LGA

[Bosch Sensortec](#)

RFQ


**BMI-S-230-C**

BOARD SHIELD 2INX1.5IN COVER

[Laird Technologies EMI](#)

RFQ


**BMI055-SHUTL**

SHUTTLE BOARD DEV KIT BMI055

[Bosch Sensortec](#)

RFQ


**BMI160-SHUTL**

SHUTTLE BOARD DEV KIT BMI160

[Bosch Sensortec](#)

RFQ

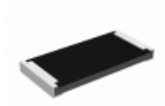

**BMI-S-226-F**

BLS 2PSH FRM SNSAT LP

[Laird Technologies EMI](#)

RFQ

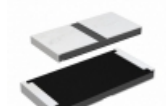
## Guess You May Looking For


**RCP2512B300RGE**

RES SMD 300 OHM 2% 22W 2512

[Vishay Dale](#)

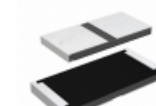
RFQ


**RCP2512W220RGS2**

RES SMD 220 OHM 2% 22W 2512

[Vishay Dale](#)

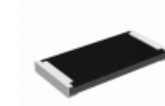
RFQ


**RCP2512W330RGE**

RES SMD 330 OHM 2% 22W 2512

[Vishay Dale](#)

RFQ


**RCP2512B43R0JE**

RES SMD 43 OHM 5% 22W 2512

[Vishay Dale](#)

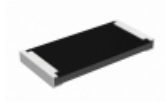
RFQ


**RCP2512W47R0JS2**

RES SMD 47 OHM 5% 22W 2512

[Vishay Dale](#)

RFQ


**RCP2512B360RJE**

RES SMD 360 OHM 5% 22W 2512

[Vishay Dale](#)

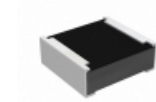
RFQ


**HVCB2010JKL500K**

RES SMD 500K OHM 5% 1W 2010

[Stackpole Electronics Inc.](#)

RFQ


**RCP0505B16R0JS2**

RES SMD 16 OHM 5% 5W 0505

[Vishay Dale](#)

RFQ


**RCP2512B75R0GS2**

RES SMD 75 OHM 2% 22W 2512

[Vishay Dale](#)

RFQ


**RCP0505W620RGS2**

RES SMD 620 OHM 2% 5W 0505

[Vishay Dale](#)

RFQ