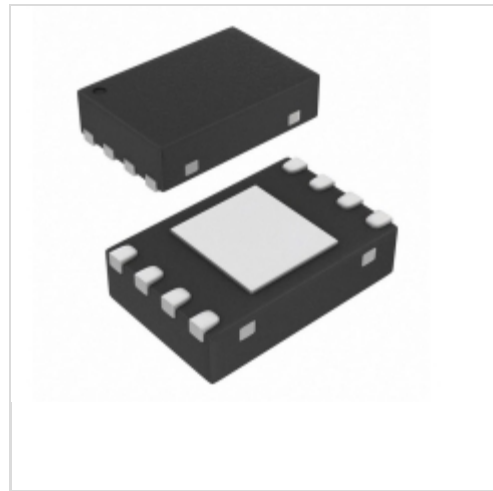


**MP62180DD-LF-Z**

**MPS (Monolithic Power Systems)**

IC CURR LIMIT SWITCH  
Lead free / RoHS Compliant  
Integrated Circuits (ICs)

[MP62180DD-LF-Z.pdf](#)

**Buy Now**

**Out Stock**

**0 pcs**

Minimum:1

Multiples:100

Manufacturer lead time 10 weeks

Images are for reference only.

See Product Specifications for product details.

If you are interested to buy MP62180DD-LF-Z,Just Email us.

Sales@zeanoit.com

our sales team will reply you within 24 hours

**Shopping Process**

**1**

**Confirm the product**

**2**

**submit the order**

**3**

**payment**

**4**

**wait for delivery**

**5**

**receive the goods**

**Specifications**

<b>Voltage - Supply (Vcc/Vdd):</b>	Not Required
<b>Voltage - Load:</b>	2.7 V ~ 5.5 V
<b>Switch Type:</b>	General Purpose
<b>Supplier Device Package:</b>	8-QFN (2x3)
<b>Series:</b>	-
<b>Rds On (Typ):</b>	75 mOhm
<b>Ratio - Input:Output:</b>	1:1
<b>Packaging:</b>	Tape & Reel (TR)
<b>Package / Case:</b>	8-TFDFN Exposed Pad
<b>Output Type:</b>	-
<b>Output Configuration:</b>	High Side
<b>Operating Temperature:</b>	-40°C ~ 85°C (TA)
<b>Number of Outputs:</b>	1
<b>Interface:</b>	On/Off
<b>Input Type:</b>	-
<b>Features:</b>	Status Flag
<b>Fault Protection:</b>	Current Limiting (Fixed), Over Temperature, Reverse Current, UVLO
<b>Current - Output (Max):</b>	2A

**Related products**

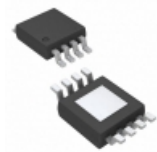

**MP62180DS-LF-Z**  
IC CURR LIMIT SWITCH  
[Monolithic Power Systems Inc.](#)

**RFQ**



**MP62180DS-LF**  
IC CURR LIMIT SWITCH  
[Monolithic Power Systems Inc.](#)

**RFQ**



**MP62180DH-LF-Z**  
IC CURR LIMIT SWITCH  
[Monolithic Power Systems Inc.](#)

**RFQ**



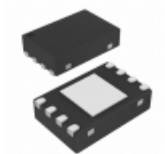
**MP62171ES-LF**  
IC CURR LIMIT SWITCH  
[Monolithic Power Systems Inc.](#)

**RFQ**



**MP62171ES-1-LF-Z**  
IC CURR LIMIT SWITCH  
[Monolithic Power Systems Inc.](#)

**RFQ**



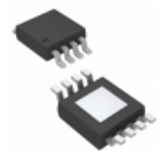
**MP62181DD-LF-P**  
IC CURR LIMIT SWITCH  
[Monolithic Power Systems Inc.](#)

**RFQ**



**MP62171ESI-LF-Z**  
[MPS](#)

**RFQ**



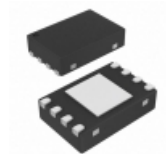
**MP62180DH-LF-P**  
IC CURR LIMIT SWITCH  
[Monolithic Power Systems Inc.](#)

**RFQ**



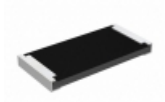
**MP62171ES-LF-Z**  
IC CURR LIMIT SWITCH  
[Monolithic Power Systems Inc.](#)

**RFQ**



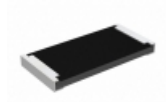
**MP62180DD-LF-P**  
IC CURR LIMIT SWITCH  
[Monolithic Power Systems Inc.](#)

**RFQ**

**Guess You May Looking For**


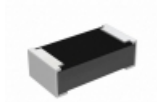
**RCP2512B43R0GEC**  
RES SMD 43 OHM 2% 22W 2512  
[Vishay Dale](#)

**RFQ**



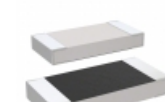
**RCP2512B620RGS6**  
RES SMD 620 OHM 2% 22W 2512  
[Vishay Dale](#)

**RFQ**



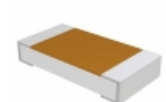
**RCP0603B27R0GET**  
RES SMD 27 OHM 2% 3.9W 0603  
[Vishay Dale](#)

**RFQ**



**M55342E03B12B3RWS**  
RES SMD 12.3K OHM 0.1% 1/5W 0805  
[Vishay Dale](#)

**RFQ**



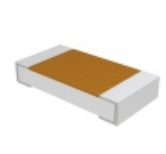
**D55342H07B698DRWS**  
RES SMD 698 OHM 1% 1/4W 1206  
[Vishay Dale](#)

**RFQ**



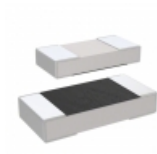
**M55342K12B732ARWS**  
RES SMD 732 OHM 0.1% 1/10W 0603  
[Vishay Dale](#)

**RFQ**



**D55342K07B10B0RTO**  
RES SMD 10K OHM 0.1% 1/4W 1206  
[Vishay Dale](#)

**RFQ**



**M55342K01B10B7RWS**  
RES SMD 10.7KOHM 0.1% 1/20W 0502  
[Vishay Dale](#)

**RFQ**



**Y1172243R000C0W**  
RES SMD 243 OHM 0.25% 1/10W 0805  
[Vishay Foil Resistors \(Division of Vishay Preciso\)](#)

**RFQ**



**Y149610R6000C0W**  
RES SMD 10.6OHM 0.25% 0.15W 1206  
[Vishay Foil Resistors \(Division of Vishay Preciso\)](#)

**RFQ**

